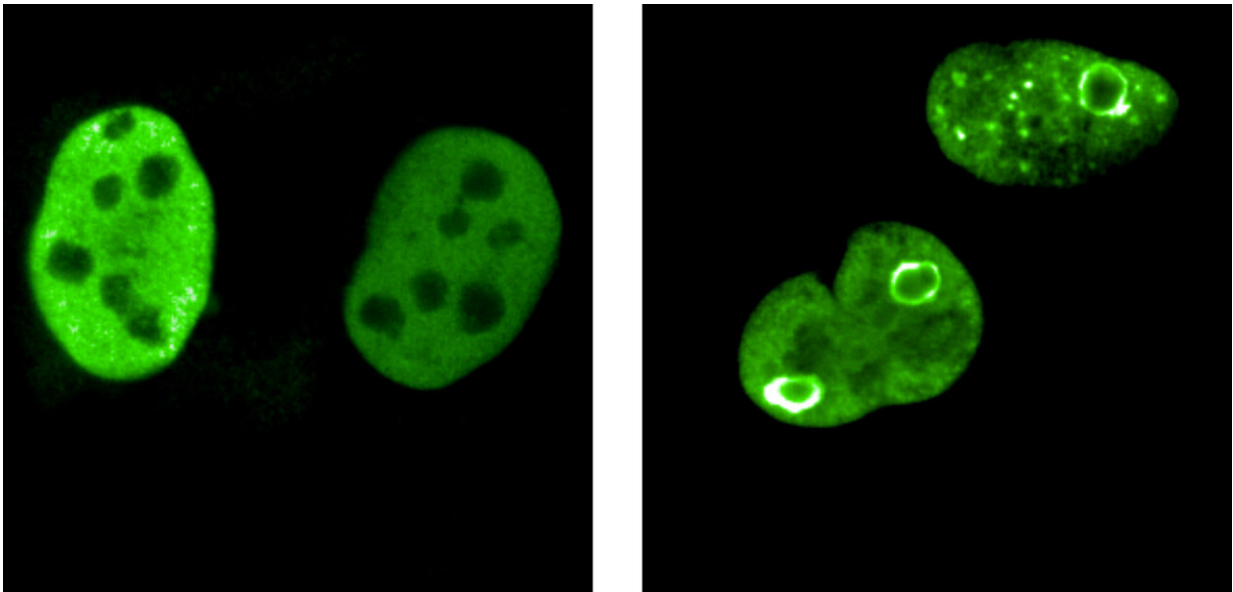


# Protein spheres protect the genome of cancer cells

November 23 2022

---



MYC proteins are colored green in this figure. In normally growing cells, they are homogeneously distributed in the cell nucleus (left). In diverse stress situations, as they occur in cancer cells, they rearrange themselves, form sphere-like structures and thus surround particularly vulnerable sections of the genome. Credit: Team Martin Eilers / University of Wuerzburg

MYC genes and their proteins play a central role in the emergence and development of almost all cancers. They drive the uncontrolled growth and altered metabolism of tumor cells. And they help tumors hide from the immune system.

MYC proteins also show an activity that was previously unknown—and which is now opening new doors for [cancer research](#): They form hollow spheres that protect particularly sensitive parts of the genome. If these MYC spheres are destroyed, [cancer cells](#) will die.

This was reported by a research team led by Martin Eilers and Elmar Wolf from the Institute of Biochemistry and Molecular Biology at Julius-Maximilians-Universität Würzburg (JMU, Bavaria, Germany) in the journal *Nature*. The researchers are convinced that their discovery is a game changer for cancer research, an important breakthrough on the way to new therapeutic strategies.

## **Hollow spheres protect sensitive DNA sites**

The researchers discovered that when cells in the lab are kept under stress conditions similar to those found in fast-growing tumor cells, the MYC proteins in the [cell nucleus](#) rearrange themselves in a dramatic way. They join together to form hollow spheres consisting of thousands of MYC proteins.

The hollow spheres surround and protect individual, particularly sensitive sites in the genome—precisely the sites where two types of enzymes can collide: Enzymes that read DNA to synthesize RNA and enzymes that duplicate DNA. Both can be thought of as two trains traveling on only one track, on DNA.

The hollow spheres thus prevent the two enzymes from colliding. The Würzburg team was able to confirm this observation in cancer cells. If the protective function of the [protein](#) spheres is switched off experimentally, collisions of the enzymes occur and, as a consequence, multiple breaks occur in the DNA—which ultimately kill the cancer cells.

## Search for specifically effective drugs

"These observations revolutionize our understanding of why MYC proteins are so crucial for the growth of tumor cells," says Martin Eilers. The new findings also raise the question of whether drugs can be developed that specifically prevent the formation of the [hollow spheres](#).

To drive this development forward, Eilers and Wolf have started a company. Together with JMU and partners from the [pharmaceutical industry](#), the search for drugs that interfere with the newly discovered functions of the MYC proteins has begun.

"The fact that investors made it possible for us to set up so quickly is certainly not an everyday occurrence," say the JMU professors. They also consider this as a sign that they have made a discovery that is very promising.

**More information:** Martin Eilers, MYC multimers shield stalled replication forks from RNA polymerase, *Nature* (2022). [DOI: 10.1038/s41586-022-05469-4](https://doi.org/10.1038/s41586-022-05469-4).  
[www.nature.com/articles/s41586-022-05469-4](https://www.nature.com/articles/s41586-022-05469-4)

Provided by University of Würzburg

Citation: Protein spheres protect the genome of cancer cells (2022, November 23) retrieved 9 February 2023 from <https://medicalxpress.com/news/2022-11-protein-spheres-genome-cancer-cells.html>

This document is subject to copyright. Apart from any fair dealing for the purpose of private study or research, no part may be reproduced without the written permission. The content is provided for information purposes only.