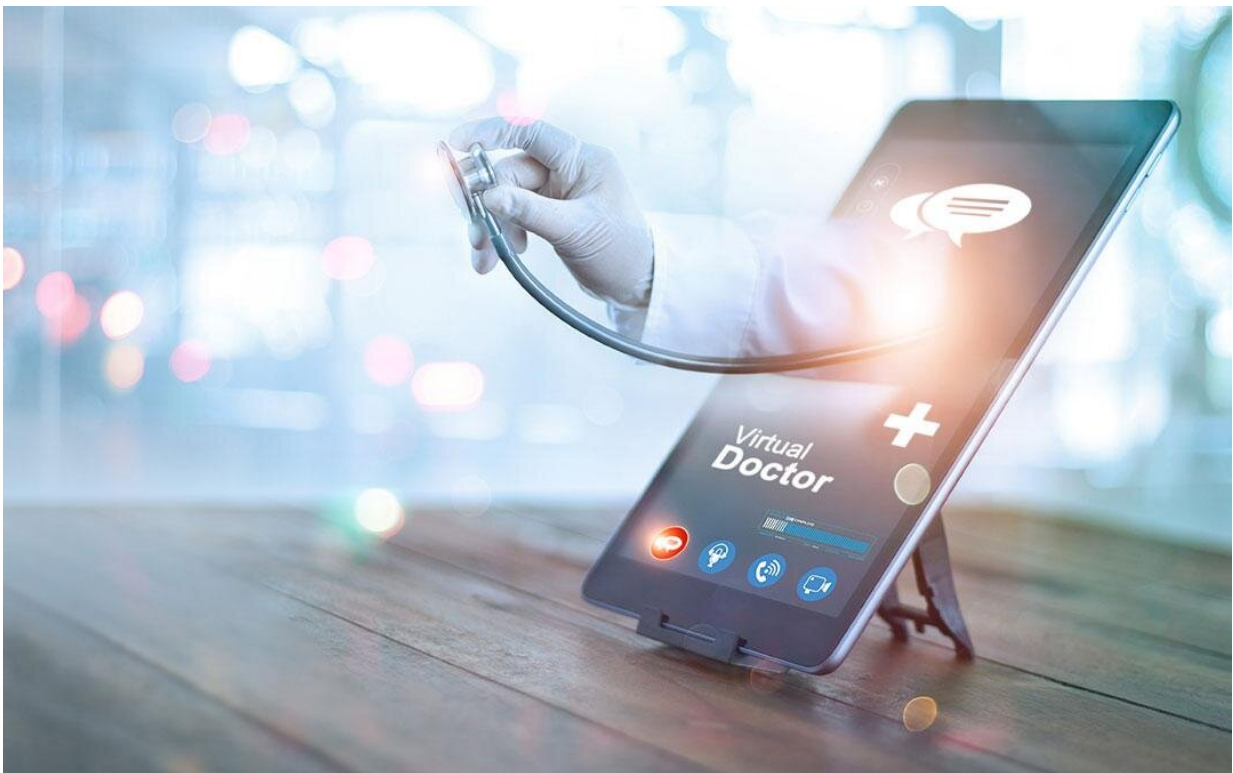


Speaking your mind: Patients' speech can reveal type of dementia

November 2 2022



Credit: PopTika/Shutterstock

The tell-tale signs of dementia are familiar to many of us, with memory loss, confusion, and difficulty concentrating that gradually get worse over time. But it's not easy to identify the particular type of dementia that someone has since the symptoms can be bafflingly similar, as in the

case of Alzheimer's disease and dementia with Lewy bodies. Now researchers at IBM Research and the University of Tsukuba, Japan, have developed a new way to distinguish between these diseases based on patients' speech.

"It's important to determine the particular type of dementia that a patient has at an early stage of the disease," says Professor Tetsuaki Arai, senior author of the study. "This ensures that patients are given appropriate medication, and it means that care can be planned based on the different patterns of disease progression."

Current practice means that to diagnose a particular type of dementia, patients often undergo brain scans and [medical procedures](#) to analyze fluid from the spinal cord. These can be time-consuming and costly as well as invasive.

"We developed a new approach, based on the speech and language disturbances that occur in different types of dementia," explains Professor Arai. "We examined whether these could be used to identify the different diseases. We began by focusing on Alzheimer's disease and dementia with Lewy bodies."

The research team studied 45 [older adults](#) with Alzheimer's disease, 27 patients with Lewy body dementia, and 49 controls. The participants were given a range of tasks that required speech responses, such as describing a picture and counting backwards. The speech was then analyzed for a variety of different features. These included linguistic features, which relate to the speech content; acoustic features, which relate to the voice quality and spectrum; and prosodic features, which relate to the intonation, speech rate, and pauses.

In line with previous studies, the patients with Alzheimer's disease were found to have impaired linguistic features, which may relate to word-

finding difficulties. In contrast, patients with Lewy body dementia were found to have impaired prosodic and acoustic features, such as slower and more monotonous speech.

The team then developed a machine learning model using the different speech features as input variables, which was found to successfully identify the two types of dementia and controls. "Our results indicate that automatic speech analysis could be used clinically to identify different types of dementia," says Professor Arai.

The study is published in *Alzheimer's & Dementia: Diagnosis, Assessment & Disease Monitoring*.

This new approach, based on patients' speech, could potentially lead to the development of self-administered tests that patients could run at home. This would be of great benefit, especially when access to health care is difficult, such as during pandemics.

More information: Yasunori Yamada et al, Speech and language characteristics differentiate Alzheimer's disease and dementia with Lewy bodies, *Alzheimer's & Dementia: Diagnosis, Assessment & Disease Monitoring* (2022). [DOI: 10.1002/dad2.12364](https://doi.org/10.1002/dad2.12364)

Provided by University of Tsukuba

Citation: Speaking your mind: Patients' speech can reveal type of dementia (2022, November 2) retrieved 18 January 2023 from <https://medicalxpress.com/news/2022-11-mind-patients-speech-reveal-dementia.html>

This document is subject to copyright. Apart from any fair dealing for the purpose of private study or research, no part may be reproduced without the written permission. The content is provided for information purposes only.