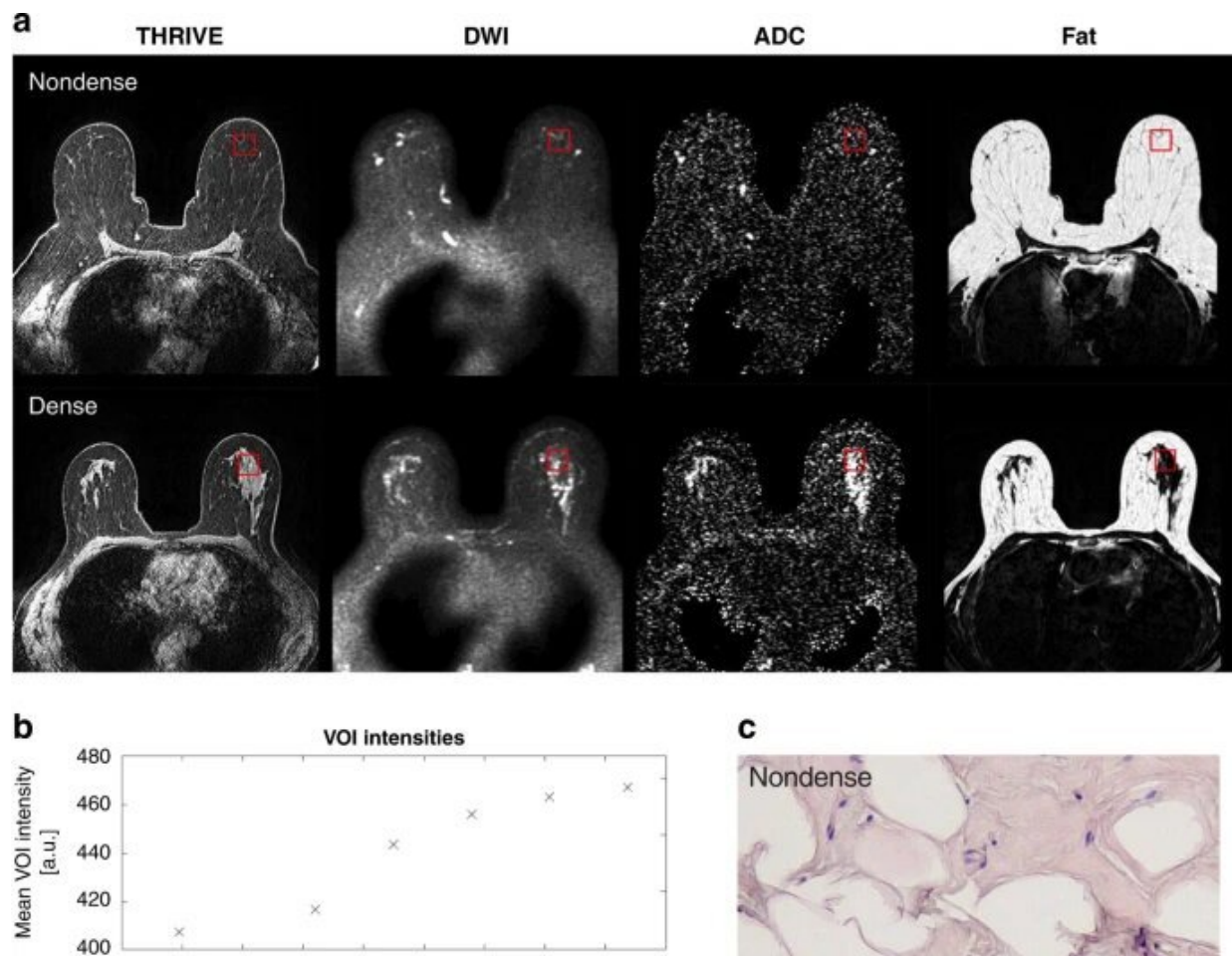


A possible biological explanation for increased cancer risk in dense breasts

October 31 2022, by Karin Söderlund Leifler



Dense and nondense breasts, THRIVE, ADC and fat measurements. **a** Superimposed is the VOI (in red) used for data extraction of included imaging voxels. Images from left to right; THRIVE pre-contrast agent injection used for perfusion assessment, DWI, ADC maps and fat channel in the water–fat-separated Dixon images for calculating LTF. Top panels depict nondense breasts

and bottom panels depict dense breasts. **b** Typical example of a curve fit of THRIVE perfusion data. Initial baseline followed by injection of contrast agent at time 0. Normalized curve fitting provided the time constant (τ) for contrast agent uptake in the VOI as well as the integrated AUC (in gray). **c** Representative hematoxylin and eosin-stained sections from nondense and dense breast tissue. Bars = 50 μm . Credit: *British Journal of Cancer* (2022). DOI: 10.1038/s41416-022-01976-3

The risk of developing breast cancer is higher in what are known as dense breasts, which appear white in mammograms, than in nondense breasts, which appear gray. Researchers at Linköping University, Sweden, have now shown that there are major biological differences dense breasts and nondense breasts. The results, published in the *British Journal of Cancer*, suggest that the properties of dense breasts promote cancer growth.

Not all breasts are the same in appearance or composition. Some breasts are "dense", and the risk of developing cancer is five times higher in these than in nondense breasts. Mammography is regularly offered to all women in Sweden older than 40 years, while other methods used to detect tumors include [magnetic resonance](#) imaging (MRI) and ultrasound.

The latter methods can be used as a supplement to mammography, but have not been evaluated for use in screening. Currently, dense and nondense breasts are treated in the same way in the Swedish health care system.

"The problem is that we don't know what to do with the women who have [dense breasts](#). Large studies would be needed before introducing a screening program for such women, such that we can identify those with greatest risk and follow them in the health care system. This is necessary

to prevent putting many women through unnecessary examinations," says Charlotta Dabrosin, professor in the Department of Biomedical and Clinical Sciences at Linköping University and consultant at the Oncology Clinic at Linköping University Hospital.

The density of a breast mainly depends on the connective tissue, or to be more precise, on everything that is not fatty tissue, since the fraction of glandular tissue is approximately the same in all breasts, dense and nondense. In mammograms, both glandular tissue and [connective tissue](#) appear white. And cancer also appears white in mammograms.

This means that it can be more difficult to detect cancerous changes in dense breasts by mammography. However, the difficulty of detecting a tumor does not fully explain the higher risk of cancer in women with dense breasts, and we do not at the moment know which other factors lie behind the increased risk.

Dabrosin has led a study and recently published the results in the *British Journal of Cancer*. The researchers investigated whether the biological properties of dense and nondense breasts differ. For this, they developed an MRI method that can measure breast density and other distinguishing factors of breasts more accurately than current methods.

Forty-four women, some with dense breasts and some with nondense breasts, were investigated using contrast-enhanced MRI. The researchers also used another technique, microdialysis. In this, a thin catheter is introduced into the breast tissue to obtain samples of the fluid that surrounds the cells, also known as the microenvironment. The researchers can measure the amounts of various proteins in this fluid. In previous studies, Dabrosin has shown that the microenvironment in dense breasts is very similar to that in breast tumors.

The current study showed unexpectedly large differences between

healthy dense and nondense breasts. The researchers measured the levels of 270 proteins and found that the levels of 124 of them were elevated in dense breasts. These proteins are associated with cancer development through such underlying processes as inflammation, the formation of new blood vessels, and [cell growth](#).

"There are huge biological differences between dense and nondense breasts. What I find amazing about our results is that we can link the levels of proteins such as inflammatory proteins and [growth factors](#) with the differences in breast physiology that we showed using MRI. We found, for example, that the contrast agent diffuses differently in the different types of breast, which suggests that the blood vessels are affected," says Dabrosin.

The researchers have seen only correlations, and cannot say what is cause and what is effect. The links between the amounts of [protein](#) and [physiological differences](#) are, however, so strong that the researchers believe that the links are causal.

Approximately every third woman aged 40-50 has precursors to cancer in the breasts. The growth often remains at this stage, and fewer than 1% of women in this age group develop cancer. The researchers hypothesize that dense breasts have an advantageous microenvironment that promotes the transition of anomalous cells to cancer, which may be part of the explanation for the higher risk of cancer in dense breasts.

"The results raise many questions about whether it is possible to reduce the levels of these proteins and reduce the risk of developing cancer. We open possibilities that we have not previously had," says Charlotta Dabrosin.

The researchers are now continuing their work with a clinical study of women with dense breasts, and will examine whether anti-inflammatory

treatment can change the microenvironment in the breast.

More information: Peter Lundberg et al, Breast density is strongly associated with multiparametric magnetic resonance imaging biomarkers and pro-tumorigenic proteins in situ, *British Journal of Cancer* (2022).

[DOI: 10.1038/s41416-022-01976-3](https://doi.org/10.1038/s41416-022-01976-3)

Provided by Linköping University

Citation: A possible biological explanation for increased cancer risk in dense breasts (2022, October 31) retrieved 21 November 2023 from

<https://medicalxpress.com/news/2022-10-biological-explanation-cancer-dense-breasts.html>

This document is subject to copyright. Apart from any fair dealing for the purpose of private study or research, no part may be reproduced without the written permission. The content is provided for information purposes only.