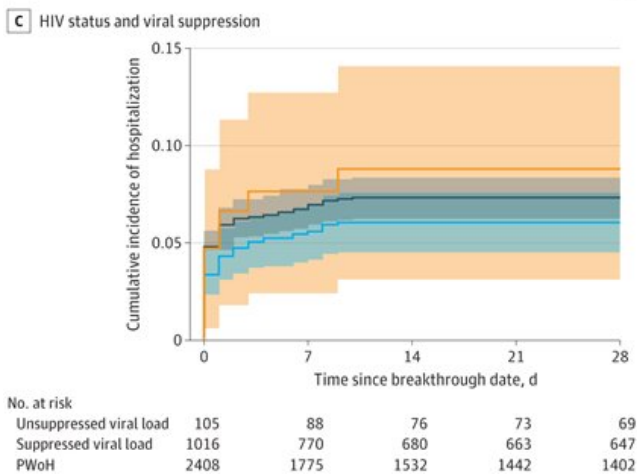
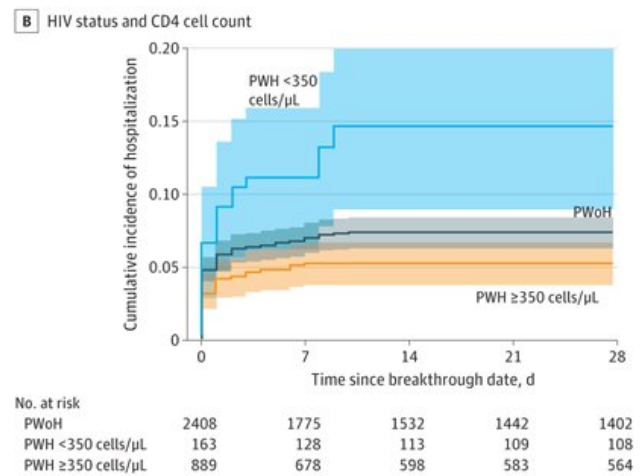
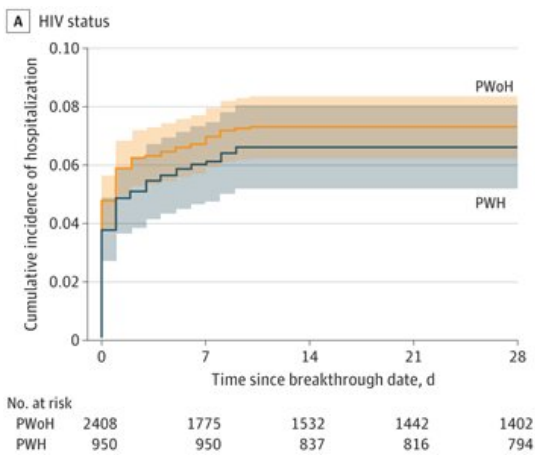


# Risk of severe breakthrough COVID-19 infection is higher for people with HIV with moderately low CD4 cell counts

October 13 2022



Graphs show incidence of severe COVID-19 breakthrough illness by HIV status (A) (log-rank test  $P = .40$ ), by CD4 cell count and HIV status (B) (log-rank test including PwOH,  $P < .001$ ; log-rank test after excluding PwOH,  $P < .001$ ), and by HIV viral suppression (defined as HIV-1 RNA viral load

Citation: Risk of severe breakthrough COVID-19 infection is higher for people with HIV with moderately low CD4 cell counts (2022, October 13) retrieved 30 December 2022 from <https://medicalxpress.com/news/2022-10-severe-breakthrough-covid-infection-higher.html>

This document is subject to copyright. Apart from any fair dealing for the purpose of private study or research, no part may be reproduced without the written permission. The content is provided for information purposes only.