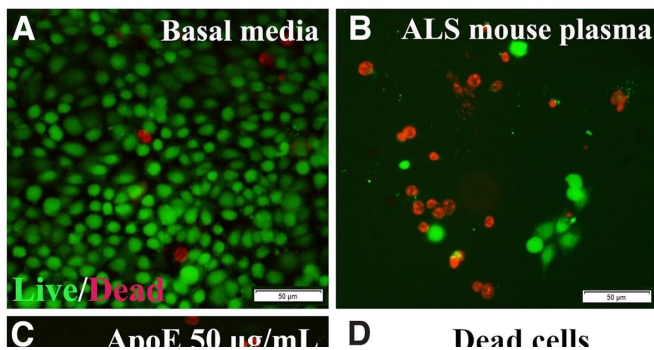


Researchers advance efforts to develop protein-based treatment therapy for individuals with ALS

4 October 2022

Mouse brain endothelial cells in vitro: Apolipoprotein E



Effect of ApoE on mBEC viability after ALS mouse plasma exposure in vitro. A, Numerous viable (green) mBECs were observed in cultures with basal media. B, Dead (red) cells significantly increased after exposure to 3% ALS mouse plasma. C, Adding 50 μ g/ml of ApoE to culture media with ALS plasma did not reduce dead cells. Scale bar: 50 μ m (A-C). D, Statistical analyses reflect imaging; **p

APA citation: Researchers advance efforts to develop protein-based treatment therapy for individuals with ALS (2022, October 4) retrieved 30 November 2022 from <https://medicalxpress.com/news/2022-10-advance-efforts-protein-based-treatment-therapy.html>

This document is subject to copyright. Apart from any fair dealing for the purpose of private study or research, no part may be reproduced without the written permission. The content is provided for information purposes only.