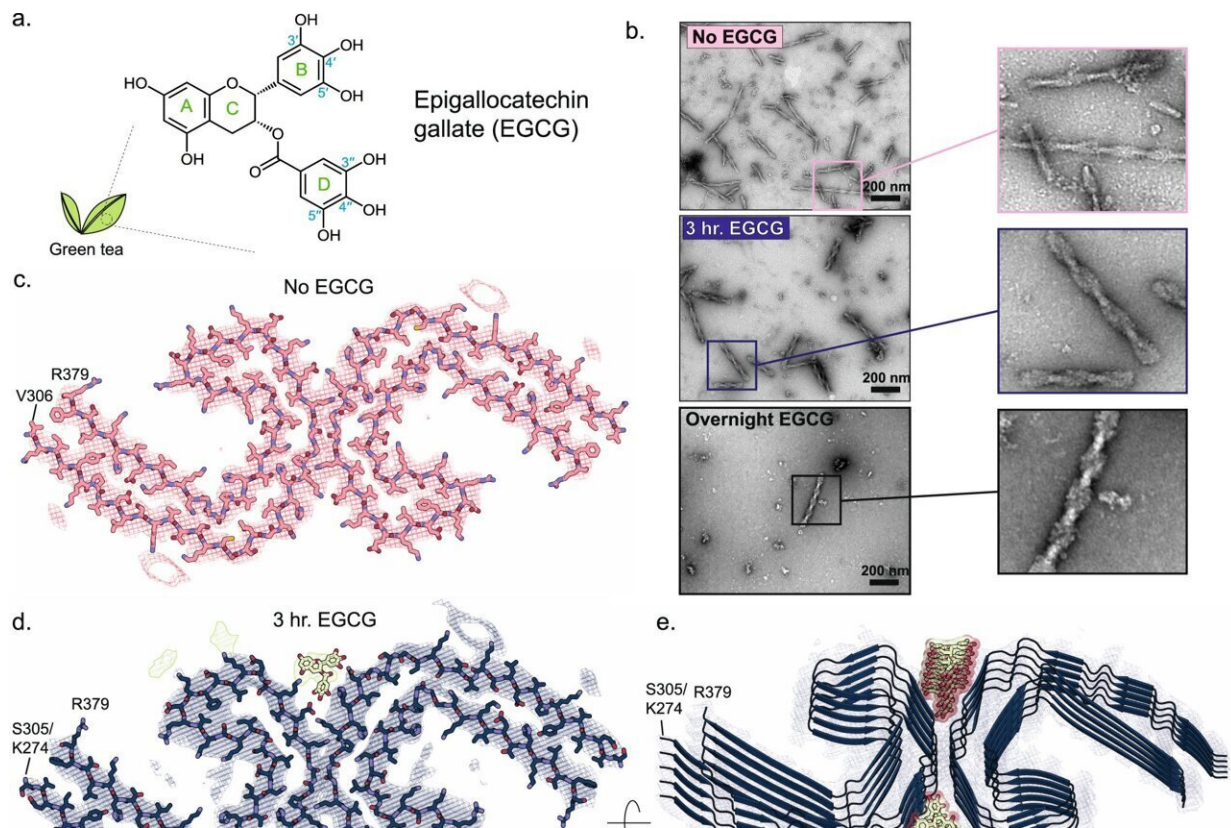


Newly identified small molecules break amyloid tangles that cause Alzheimer's

September 20 2022, by Holly Ober



CryoEM structure of AD-tau PHF in complex with EGCG. a Epigallocatechin gallate (EGCG) is the most abundant polyphenol in green tea. It includes a benzenediol ring (A) adjoined to a tetrahydropyran moiety (C), which are connected to a galloyl ring (D) and pyrogallol ring (B). The 8 hydroxyl groups allow EGCG to engage in hydrogen bonding and other polar interactions with numerous biomolecules. b Electron micrographs of brain-derived PHFs over the course of EGCG incubation. Without EGCG (top), numerous fibrils are observed (representative image from $n = 15$). After 3-h incubation at 37°C

(middle), subtle changes in the fibril morphology are present, with a widening of the fibril fuzzy coat (representative image from $n = 15$). Far fewer fibrils are seen at this time point. After overnight EGCG incubation (bottom), the rare remaining fibrils appear swollen and disturbed (representative image from $n = 8$). c Cross-sectional view of the AD patient brain-derived tau PHF cryoEM structure before the addition of EGCG. d Tau PHF structure following 3-h incubation with EGCG. Three new regions of density become apparent with the addition of EGCG (Sites 1–3). Site 1 is located in the polar cleft at the intersection of the two protofilaments composing the PHF. Sites 2 and 3 of new density are observed adjacent to K343 and K347 near the β -helix of the fibril. Both Sites 2 and 3 display weaker density than Site 1. e Tilted view of the 3-h structure with EGCG bound at Site 1. f Close up top- and side-views of EGCG in Site 1. This region borders N327, H329, E338, and K340 of the fibril, with EGCG making polar and hydrogen-bond contacts with these residues. EGCG adopts a primarily planar conformation when bound to the fibril, stabilized by π - π interactions of the stacked aromatic rings of EGCG. When viewed from the side of the fibril axis, the EGCG density is seen stacking with the same period as the fibril layers. g Side-view of a single EGCG molecule buried by the fibril and other copies of EGCG. Credit: *Nature Communications* (2022). DOI: 10.1038/s41467-022-32951-4

Scientists at UCLA have used a molecule found in green tea to identify additional molecules that could break up protein tangles in the brain thought to cause Alzheimer's and similar diseases.

The green tea molecule, EGCG, is known to break up tau fibers—long, multilayered filaments that form tangles that attack neurons, causing them to die.

In a paper published in *Nature Communications*, UCLA biochemists describe how EGCG snaps tau fibers layer by layer. They also show how they discovered other [molecules](#) likely to work the same way that would make better potential candidates for drugs than EGCG, which can't

easily penetrate the [brain](#). The finding opens up new possibilities for fighting Alzheimer's, Parkinson's and related diseases by developing drugs that target the structure of tau fibers and other amyloid fibrils.

Thousands of J-shaped layers of tau molecules bound together make up the type of [amyloid fibrils](#) known as tangles, first observed a century ago by Alois Alzheimer in the post-mortem brain of a patient with dementia. These fibers grow and spread throughout the brain, killing neurons and inducing brain atrophy. Many scientists think removing or destroying tau fibers can halt the progression of dementia.

"If we could break up these fibers we may be able to stop death of neurons," said David Eisenberg, UCLA professor of chemistry and biochemistry whose lab led the new research. "Industry has generally failed at doing this because they mainly used large antibodies that have difficulty getting into the brain. For a couple of decades, scientists have known there's a molecule in [green tea](#) called EGCG that can break up amyloid fibers, and that's where our work departs from the rest."

EGCG has been studied extensively but has never worked as a drug for Alzheimer's because its ability to dismantle tau fibers works best in water, and it doesn't enter cells or the brain easily. Also, as soon as EGCG enters the bloodstream it binds to many proteins besides tau fibers, weakening its efficacy.

To investigate the mechanisms through which EGCG breaks up tau fibers, the researchers extracted tau tangles from the brains of people who died from Alzheimer's and incubated them for varying amounts of time with EGCG. Within three hours, half the fibers were gone and those that remained were partially degraded. After 24 hours, all the fibers had disappeared.

Fibrils in the middle stage of EGCG-induced degradation were flash

frozen, and images of these frozen samples showed how EGCG snapped the fibrils into apparently harmless pieces.

"The EGCG molecules bind to each layer of the fibers, but the molecules want to be closer together. As they move together the fiber snaps," Eisenberg said.

Kevin Murray, who was a UCLA doctoral student at the time and is now in the neurology department at Brown University, identified specific locations, called pharmacophores, on the tau fiber to which EGCG molecules attached. Then he ran [computer simulations](#) on a library of 60,000 brain and nervous system-friendly small molecules with potential to bind to the same sites. He found several hundred molecules that were 25 atoms or less in size, all with the potential to bind even better to the tau fiber pharmacophores. Experiments with the top candidate molecules identified from the computational screening identified about a half dozen that broke up the tau fibers.

"Using the super-computing resources available at UCLA, we are able to screen vast libraries of drugs virtually before any wet-lab experiments are required," Murray said.

A few of these top compounds, most notably molecules called CNS-11 and CNS-17, also stopped the fibers from spreading from cell to cell. The authors think these molecules are candidates for drugs that could be developed to treat Alzheimer's disease.

"For cancer and many metabolic diseases knowing the structure of the disease-causing protein has led to effective drugs that halt the disease-causing action," Eisenberg said. "But it's only recently that scientists learned the structures of tau tangles. We've now identified small molecules that break up these fibers. The bottom line is, we've put Alzheimer's disease and amyloid diseases in general on same basis as

cancer, namely, that structure can be used to find drugs."

CNS-11 is not a drug yet but the authors call it a lead.

"By studying variations of this, which we are doing, we may go from this lead into something that would be a really good [drug](#)," Eisenberg said.

The paper, "Structure-based discovery of [small molecules](#) that disaggregate Alzheimer's disease tissue derived tau fibrils in vitro," was published in *Nature Communications*.

More information: Paul M. Seidler et al, Structure-based discovery of small molecules that disaggregate Alzheimer's disease tissue derived tau fibrils in vitro, *Nature Communications* (2022). [DOI: 10.1038/s41467-022-32951-4](#)

Provided by University of California, Los Angeles

Citation: Newly identified small molecules break amyloid tangles that cause Alzheimer's (2022, September 20) retrieved 23 April 2024 from <https://medicalxpress.com/news/2022-09-newly-small-molecules-amyloid-tangles.html>

<p>This document is subject to copyright. Apart from any fair dealing for the purpose of private study or research, no part may be reproduced without the written permission. The content is provided for information purposes only.</p>
