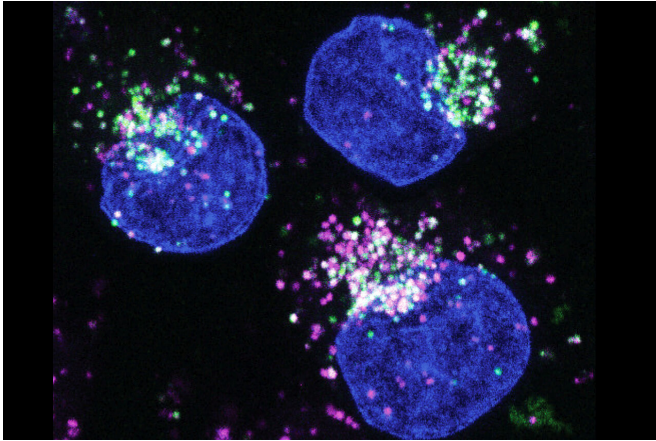


Breaking down proteins: How starving cancer cells switch food sources

9 September 2022



Human cancer cells (cell nucleus in blue) feeding on protein (Albumin, labeled in green). The proteins are digested and broken down into amino acids in the lysosomes (magenta). Credit: W. Palm / DKFZ

Cancer cells often grow in environments that are low in nutrients, and they cope with this challenge by switching their metabolism to using proteins as alternative "food". Building on genetic screens, an international team of scientists could identify the protein LYSET as part of a pathway that allows cancer cells to make this switch. Their findings are now published in the journal *Science*.

Amino acids are the building blocks of proteins and key nutrients for [cell growth](#) and proliferation. Understanding how cells utilize [amino acids](#) in [different environments](#) is a central question in basic biology and [cancer research](#). Tumor tissues often have a limited blood supply, and to grow under such conditions, [cancer cells](#) switch their metabolic activities. In particular, they switch from taking up nutrients delivered by blood vessels to exploiting alternative nutrients, such as breaking down surrounding proteins as a food source when facing starvation. However, the mechanisms that enable cancer cells to make this switch have

remained largely elusive.

To better understand the [molecular pathways](#) that underlie this nutrient switch in cancer, two groups of scientists with matching expertise teamed up: Wilhelm Palm of the German Cancer Research Center (DKFZ) in Heidelberg is a leading expert in cancer metabolism, Johannes Zuber at the Research Institute of Molecular Pathology (IMP) in Vienna brought in ample experience in functional cancer genetics. The scientists set up their study with tightly controlled nutrient conditions to mimic amino acid starvation as it occurs in many tumors. Then they used the "gene scissors" CRISPR-Cas9 to disrupt the expression of almost every gene in the genome, which allowed them to pin down several pathways involved in the nutrient switch.

Among them, the scientists spotted an uncharacterized gene that was only required for cell survival when cancer cells were feeding on extracellular proteins. This gene, which the scientists re-named "LYSET" (Lysosomal Enzyme Trafficking Factor), turned out to be critical for the function of lysosomes, small organelles that function as the stomach of cells where proteins are digested. Further experiments into the function of LYSET revealed that the gene acts as a core component of the so-called mannose-6-phosphate pathway, which is required for filling lysosomes with digestive enzymes. In the absence of LYSET, cancer cells lack enzymes in their lysosomes and are no longer able to digest proteins.

Then the scientists turned to mouse models to study the function of LYSET in real tumors. They found that the loss of LYSET strongly impaired tumor development in several types of cancer, while it was well-tolerated under normal nutrient conditions.

Wilhelm Palm, whose lab was among the first who described the ability of cancer cells to feed on extracellular proteins, says that "with LYSET, we

have discovered a central component of a metabolic pathway that enables adaptations to different nutrients, a key ability of cancer cells to survive and grow in austere Tumor environments."

"This is what made the discovery so exciting," says Johannes Zuber. "LYSET and the mannose-6-phosphate pathway turn out to be particularly important for cancer cells and could therefore be a molecular entry point for attacking a major metabolic bottleneck in cancer."

More information: Catarina Pechincha et al, Lysosomal enzyme trafficking factor LYSET enables nutritional usage of extracellular proteins, *Science* (2022). [DOI: 10.1126/science.abn5637](https://doi.org/10.1126/science.abn5637)

Provided by German Cancer Research Center

APA citation: Breaking down proteins: How starving cancer cells switch food sources (2022, September 9) retrieved 22 September 2022 from <https://medicalxpress.com/news/2022-09-proteins-starving-cancer-cells-food.html>

This document is subject to copyright. Apart from any fair dealing for the purpose of private study or research, no part may be reproduced without the written permission. The content is provided for information purposes only.