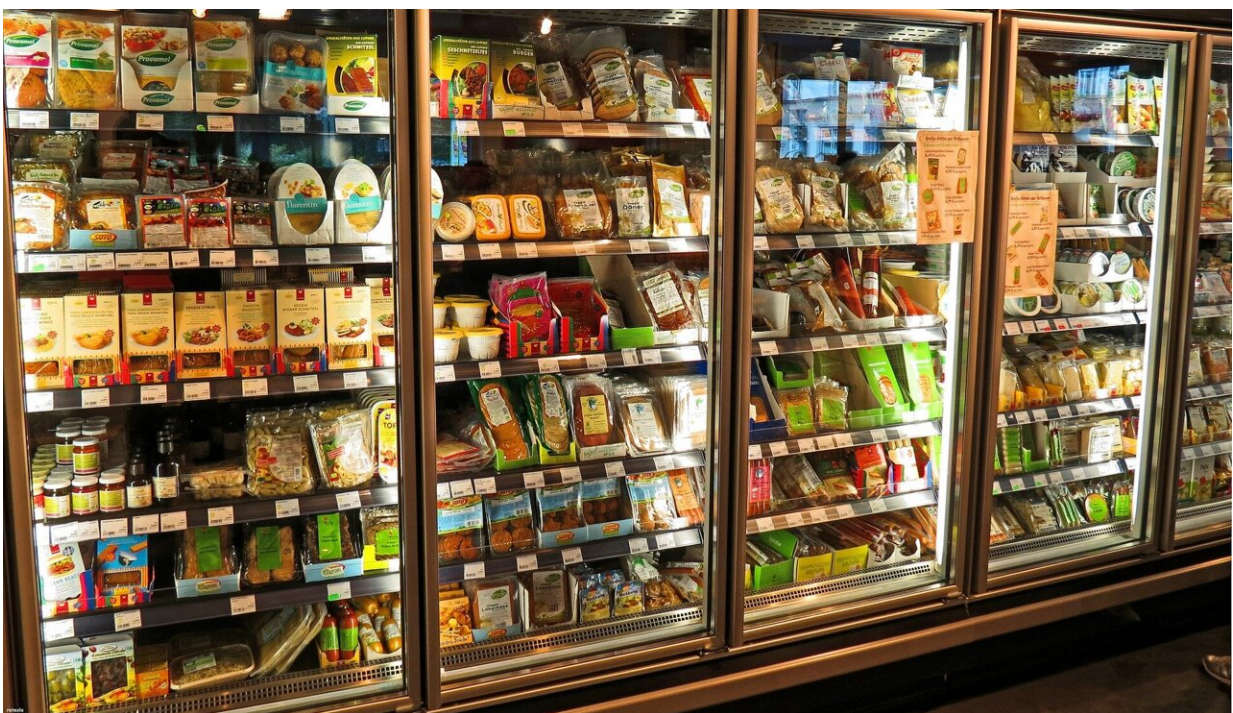


'Gateway' foods like candy may lead to unhealthy teen eating, according to 16-year-old lead researcher

September 7 2022



Credit: Pixabay/CC0 Public Domain

Certain ultra-processed foods, such as candy, pastries and frozen desserts, may be "gateway" foods for adolescents, leading them to eat higher quantities of other unhealthy foods, according to new research presented at the American Heart Association's Hypertension Scientific

Sessions 2022, Sept. 7-10, 2022 in San Diego. The meeting is the premier scientific exchange focused on recent advances in basic and clinical research on high blood pressure and its relationship to cardiac and kidney disease, stroke, obesity and genetics.

The research suggests that reducing consumption of key gateway foods may make an impact in overall consumption of ultra-processed foods, which are high in sugar, salt, unhealthy trans fat and artificial flavors and colors. Ultra-processed foods such as bread, cereals, desserts, sodas and processed meats comprise more than 60% of the calories Americans eat each day. Previous research has linked high consumption of ultra-processed foods with hypertension, weight gain, increased risk of heart disease and premature death.

"Ultra-processed foods are designed to be hyper-palatable, or engineered to be as addictive as possible," said Maria Balhara, lead researcher of this study and a student at Broward College in Davie, Florida. "They're also cheap and convenient, which makes them hard to resist. Most people are eating too many of these foods without realizing it."

Balhara has a unique perspective regarding adolescent eating behavior: She's 16 years old, and led the study while dual-enrolled at Broward College while attending Cooper City High School.

Balhara gathered data on how frequently adolescents consumed 12 ultra-processed [food](#) products during the previous 8 weeks. Ultra-processed foods included prepackaged cookies, candy, chips, chocolate, [energy drinks](#), frozen desserts, soda, store-bought pastries, store-bought smoothies, syrup-sweetened coffee or tea, white bread and processed meat. Study participants included 315 teens, ages 13-19 recruited from 12 high schools in South Florida between February and April 2022. Average BMI among participants was 22.8 (indicating normal body weight), and 56% of participants self-identified as white, 25.2 % as

Hispanic and 7.6% as Black. In addition, 52.2% of participants identified as female, 41.6% male, 3.2% nonbinary, and the rest did not specify their gender.

Participants completed a survey Balhara developed called the Processed Intake Evaluation (PIE). The survey assessed the frequency of their consumption of the 12 processed foods during the previous 8 weeks in 2022, and questions to gauge their 2022 consumption (after COVID 19 restrictions were lifted) with their estimated consumption in 2019 (before COVID restrictions were implemented). The survey asked the students to report "true" or "false" responses to statements, such as "I often drank soda during the preceding 8 weeks in 2022," and "I often drank soda prior to the pandemic in 2019." Their answers were used to compute a PIE score of 0-100, with 8.33 points given for answers of "often" or 0 points otherwise. Their scores for 2022 consumption were compared to their scores for estimated 2019 pre-pandemic consumption.

Candy, prepackaged pastries and frozen desserts were found to act as a possible "gateway" to drive increased (or decreased) consumption of other processed food products. Teenagers who changed their consumption of these "gateway" foods were more likely to change their consumption of all other ultra-processed foods as well.

The analysis found that among the identified gateway foods:

- increased consumption frequency of frozen desserts was associated with an 11% increase in consumption of all other ultra-processed foods;
- increased consumption of pastries was associated with a 12% increase in consumption of all other ultra-processed foods; and
- increased consumption of candy was associated with a 31% increase in consumption of all other ultra-processed foods.

The report also found that 43% of the adolescents estimated that they increased how frequently they consumed ultra-processed foods after pandemic restrictions were lifted compared with their consumption before the pandemic, while 57% estimated a decrease in consumption as measured by PIE score.

Among other foods in the survey, decreased consumption of processed meats among study participants was associated with an 8% decrease in consumption of all other ultra-processed foods; decreased consumption of white bread was associated with a 9% decrease in consumption of all other ultra-processed foods; and decreased consumption of prepackaged cookies was associated with a 10% decrease in consumption of all other ultra-processed foods.

"For teenagers whose consumption of ultra-processed foods has not yet been established, certain gateway foods such as candy, store-bought pastries and frozen desserts should be avoided, since increased consumption of these foods appears to lead to increased consumption of other processed foods," Balhara said.

"The good news," she adds, "is that even small changes, such as reducing how often you eat a few gateway foods, may reduce overall consumption of unhealthy foods and have a big impact on your overall health."

"I commend Ms. Balhara for her project, which highlights the importance of establishing good dietary patterns early in life," said Donna K. Arnett, Ph.D., the executive vice president for academic affairs and provost at the University of South Carolina, and a former American Heart Association president. "The relationship between poor dietary quality and cardiovascular risk factors is well-established. While this is a small, preliminary study, it's an important topic to continue to investigate and help us understand ways we can influence dietary behaviors to promote optimal cardiovascular health for all ages."

Among the study's limitations were its limited generalizability to all adolescent populations and that the information gathered was self-reported. In addition, the PIE survey has not been validated, and the study did not include health data such as blood tests to determine the impacts of participants' dietary choices.

More information: Conference: [professional.heart.org/en/meet.../scientific-sessions](https://professional.heart.org/en/meetings/2022-09-gateway-foods-candy-unhealthy-teen)

Provided by American Heart Association

Citation: 'Gateway' foods like candy may lead to unhealthy teen eating, according to 16-year-old lead researcher (2022, September 7) retrieved 23 April 2024 from <https://medicalxpress.com/news/2022-09-gateway-foods-candy-unhealthy-teen.html>

This document is subject to copyright. Apart from any fair dealing for the purpose of private study or research, no part may be reproduced without the written permission. The content is provided for information purposes only.