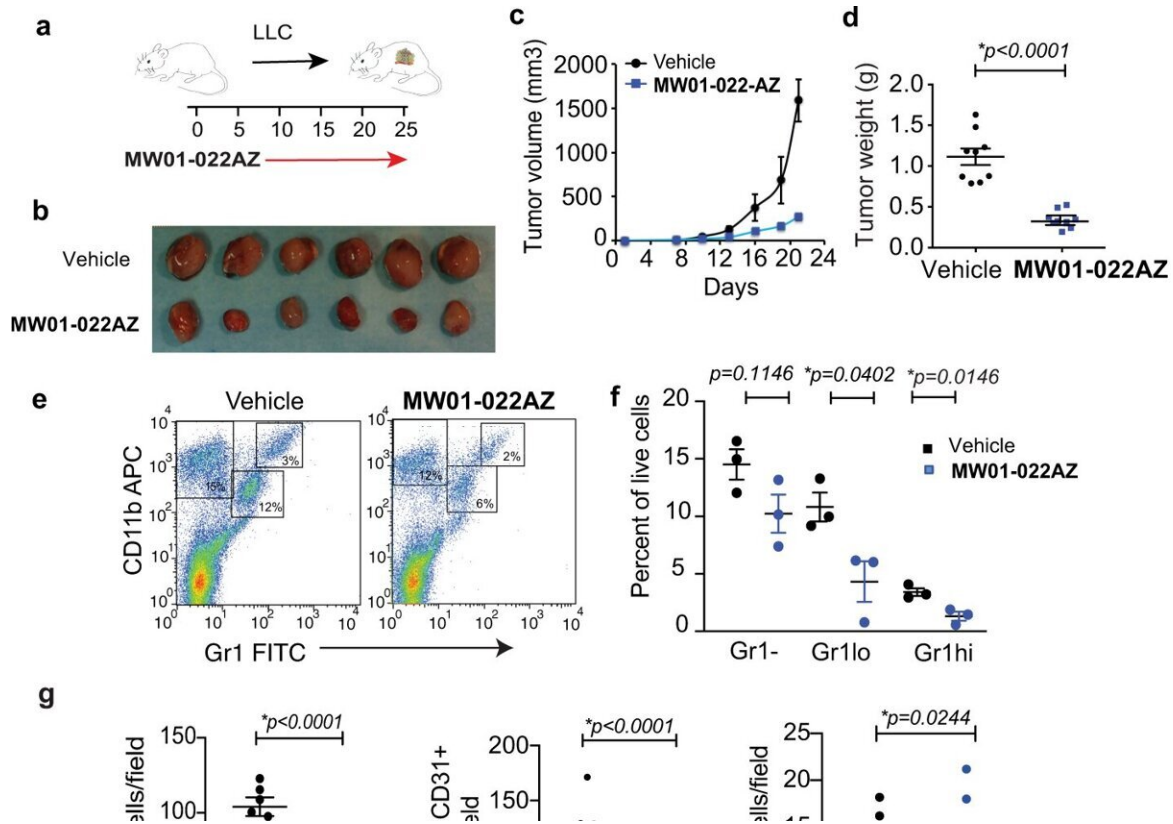


'Inside out' signaling promotes tumor growth

August 8 2022, by Will Doss



Pharmacological inhibitor of MLCK MW01-022AZ suppressed tumor inflammation and growth. a Schematic of LLC lung tumor implantation in C57Bl6 mice and MW01-022AZ treatment. b–d Effect of MW01-022AZ on LLC b gross tumor morphology (n = tumors from 6 mice) c tumor volume (n = 9 mice and d tumor weight at endpoint (21 days) (n = 9 mice). *p

Citation: 'Inside out' signaling promotes tumor growth (2022, August 8) retrieved 1 February 2024 from <https://medicalxpress.com/news/2022-08-tumor-growth.html>

This document is subject to copyright. Apart from any fair dealing for the purpose of private study or research, no part may be reproduced without the written permission. The content is provided for information purposes only.