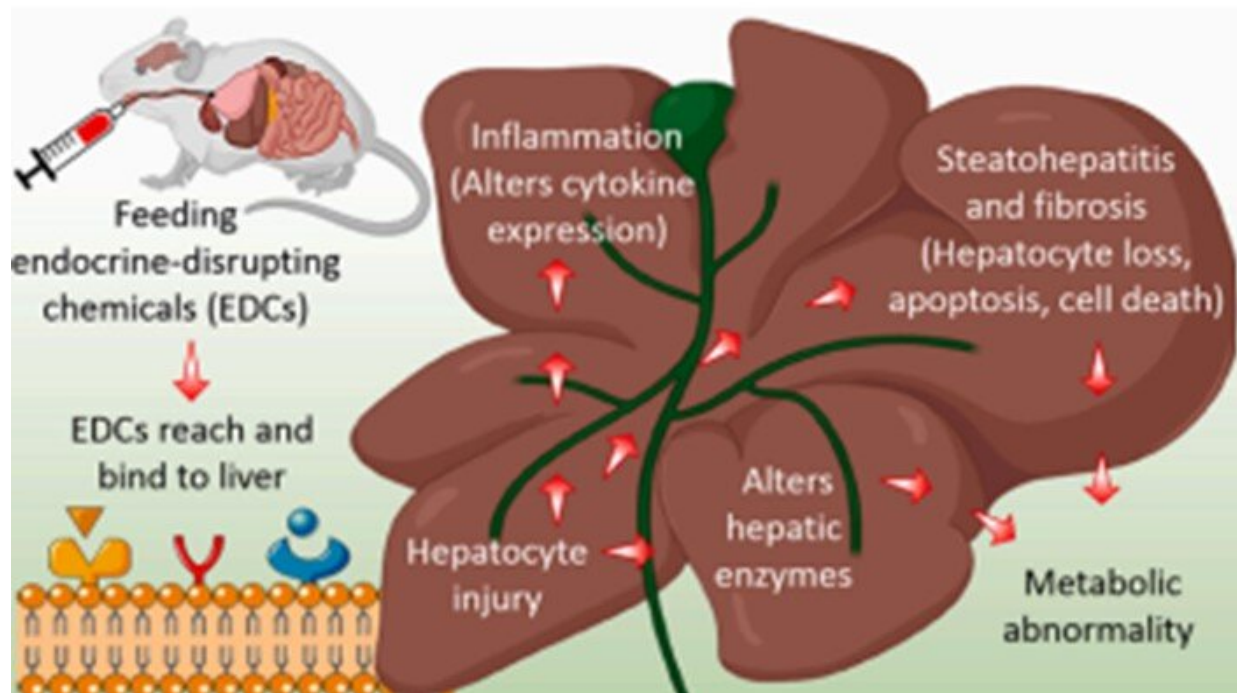


# Study reports hepatic toxicity from endocrine disrupting chemical mixtures

August 4 2022



Endocrine-disrupting chemicals (EDCs) can damage the liver by altering liver enzymes, eliciting the release of inflammatory cytokines, and promoting excessive fat buildup in the liver resulting in a condition called steatohepatitis, which may progress into liver fibrosis, cell death, and ultimately liver failure, scientists report based on their study using a mouse model. Credit: Myung-Geol Pang, Chung-Ang University

We are increasingly being exposed to endocrine-disrupting chemicals

(EDCs) that interfere with the normal functioning of our hormones. Bisphenol A (BPA) and phthalates, which are widely used in consumer products including plastics, aluminum cans, pharmaceuticals, and cosmetics, are well-known EDCs.

Since both BPA and phthalates are structurally similar to [steroid hormones](#) that regulate chemical signaling in the body, they are capable of manipulating and disrupting hormonal functions. The [liver](#), the seat of energy metabolism and xenobiotic detoxification, is the main target of these EDCs. The liver converts these EDCs into non-toxic water-soluble metabolites for excretion via urine. However, this biotransformation process generates reactive intermediates that accumulate in the liver, causing cell death and organ failure.

Studies involving animal models and human urine samples have confirmed the positive correlation between exposure to individual EDCs and abnormal liver function. However, they fail to consider real-life scenarios where uncontrolled multi-chemical exposure occurs simultaneously.

To address this issue, Professor Myung-Geol Pang and his colleagues from Chung-Ang University, Korea investigated the effects of the combined exposure to BPA and phthalates on liver function and metabolic homeostasis in mice models. Elaborating on their study's design, Prof. Pang observes, "We determined the combined effects of multiple EDCs using a real-life risk simulation concept." Their study was made available online on May 26, 2022 and is to be published on August 15, 2022, in volume 436 of the *Journal of Hazardous Materials*.

Prof. Pang and his team evaluated the effects of BPA and an EDC mixture consisting of BPA and seven phthalate compounds on male mice. They observed that neither BPA alone nor the EDC mixture affected liver function at the permissible human daily exposure (DE)

limits defined by the Ministry of Food and Drug Safety in Korea. However, significant changes in the liver were observed when the dose of the EDC mixture was increased to 25, 250, and 2500 times the DE limit, including an increase in the overall weight of the liver. The study recorded lipid, triglyceride, and cholesterol—forms in which fat is stored in the body—buildup in the liver in addition to elevated [blood glucose levels](#) with these high levels of EDC exposure. The scientists speculated that the EDCs induced the expression of key genes involved in glucose production and transport pathways, which ultimately impacted liver health.

Since EDC exposure is known to alter [liver enzymes](#), the team examined the levels of blood serum components that are indicative of liver injury. Increased levels of the enzyme aminotransferase were observed upon exposure to EDC mixture levels that were over 25 times the recommended DE level, indicating liver damage. Additionally, an aspartate and alanine aminotransferase ratio of  $>1$  was also observed, which indicated a higher risk of non-alcoholic fatty liver disease and the progression of liver fibrosis owing to an increased deposition of collagen fiber. Moreover, anti-inflammatory cytokines were found to be aggravated in EDC-exposed mice, which resulted in steatohepatitis, a condition where excessive fat accumulates in the liver causing cell death and progression of liver fibrosis. It must be noted here that the [mammalian immune system](#) secretes pro-inflammatory cytokines in response to hazardous chemicals, such as EDCs, or infections, thereby contributing to liver inflammation.

Interestingly, markers of oxidative stress and [cell death](#) by apoptosis were also observed to be abundant in the EDC-exposed mice. The scientists attributed this to the reduced antioxidant capacity of the liver damaged by the EDCs.

This study is important in that it evaluates the impact of toxic chemicals

in real-life scenario, which is much needed to underscore and define their permissible levels in [consumer products](#). "Combined EDC exposure may increase overall EDC ingestion, resulting in significant health consequences," explains Prof. Pang. What implications might their findings have? "Our study tried to change the conventional toxicological approach and we hope it has an enormous impact on regulatory and public health perspectives," says Prof. Pang.

**More information:** Md Saidur Rahman et al, Hepatic consequences of a mixture of endocrine-disrupting chemicals in male mice, *Journal of Hazardous Materials* (2022). [DOI: 10.1016/j.jhazmat.2022.129236](https://doi.org/10.1016/j.jhazmat.2022.129236)

Provided by Chung Ang University

Citation: Study reports hepatic toxicity from endocrine disrupting chemical mixtures (2022, August 4) retrieved 19 May 2023 from <https://medicalxpress.com/news/2022-08-hepatic-toxicity-endocrine-disrupting-chemical.html>

This document is subject to copyright. Apart from any fair dealing for the purpose of private study or research, no part may be reproduced without the written permission. The content is provided for information purposes only.