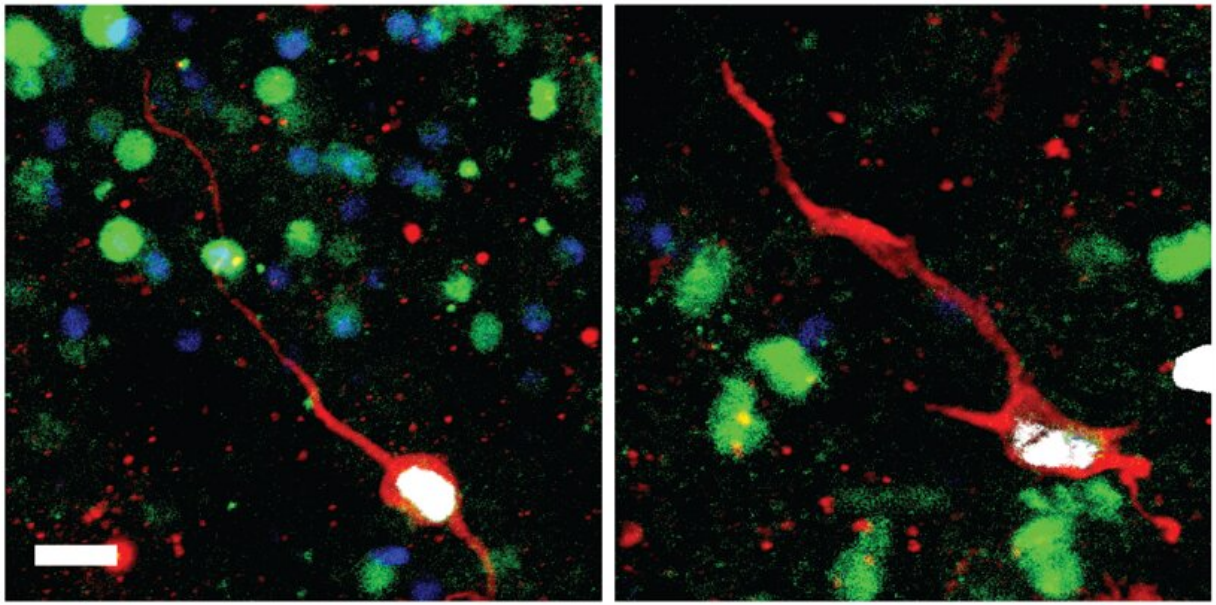


# Discovery of molecular signatures of immature neurons in human brain provides new insights into brain plasticity

July 18 2022

---



Two examples of newly born immature dentate granule neurons in the adult human hippocampal surgical samples in culture, labeled by overlapping marker signals of immature neurons (red), dentate granule neurons (green), cell nuclei (blue), and newborn cells tagged by synthetic nucleoside analogues (white).  
Credit: Perelman School of Medicine at the University of Pennsylvania

A team led by researchers at the Perelman School of Medicine at the University of Pennsylvania has used advanced techniques to show that,

in a key memory region of the brain called the hippocampus, immature, plastic neurons are present in significant numbers throughout the human lifespan. The findings, published this month in *Nature*, hope to resolve a long-running controversy over the existence of "adult neurogenesis"—the production of new immature neurons in the mature human brain. The discovery also paves the way for the deeper study of adult neurogenesis and its roles in memory, mood, behavior, and brain disorders.

"Many mammals generate new neurons in their brains throughout their lifespans which play a critical role in the [brain's](#) plasticity, or ability to change and adapt over time. This ability to repair itself is especially important when the brain is damaged, which is what happens during a stroke or [brain injury](#)," said senior author Hongjun Song, Ph.D., a Perelman Professor of Neuroscience at Penn. "This plasticity is also important for understanding diseases like Alzheimer's, which affect a patient's memory, among other functions."

The existence of adult neurogenesis in humans has been debated for decades. For almost a century, neuroscientists assumed that, once the mammalian brain matured, no new neurons were produced in it—the existing ones had to last throughout adulthood. Eventually, studies began to provide evidence of newly produced, immature neurons in the adult brain, in mice, humans, and other mammals, especially in the olfactory (smell) region, and in the hippocampus. Immature neurons in the hippocampus were and continue to be of particular interest, since this brain region play major roles in learning, memory and mood regulation, and are reduced in the brains of people with Alzheimer's disease.

However, in the past few years, other studies have found no evidence of significant adult neurogenesis in the human hippocampus. It has been difficult for neuroscientists to settle the debate, because they haven't had an easy, sensitive, and specific method for identifying newly produced,

immature neurons in samples of adult human brain tissue.

Song, Ming and their team overcame this challenge with the help of two powerful and relatively new tools. The first is single-nucleus RNA sequencing, which records essentially all gene activity in any individual cell. The second is [machine learning](#), a type of artificial intelligence that, in this case, the researchers used to sift through enormous gene-activity datasets—for mice and humans—to learn the subtle differences between mature and immature hippocampal neurons.

Using these methods, the researchers confirmed the presence of immature hippocampal neurons, chiefly of a type called [granule cells](#), across a wide range of human brain samples from infancy to age 92. The immature granule [cells](#) represented usually at least a few percent of the granule cell population, even in elderly brains. The researchers did not find significant numbers of immature neurons in other regions in adult human brains.

The analysis uncovered a broad pattern of [gene activity](#) characteristic of immature granule cells, and showed how that pattern shifts during normal aging, differs between humans and mice, and is altered in Alzheimer's disease. Consistent with prior studies, the researchers found that the proportion of immature granule cells among all granule cells was greatly reduced in Alzheimer's brains—by more than half compared to age-matched non-Alzheimer's brains.

Further hinting at the power of this type of analysis for exploring disease origins, the researchers looked at the expression, across the lifespan in immature granule cells, of known risk genes for [brain disorders](#) including Alzheimer's and autism spectrum disorders. They found that several of these risk genes began to be expressed in immature granule cells at ages when the linked disorder is thought to arise.

The study included the identification of the hippocampal progenitor cells that derive from [neural stem cells](#) and, in turn, give birth to new granule cells. These experiments indicated that the progenitors are relatively scarce, but serve as steady sources of new granule cells, which mature very slowly, over time spans of a year or more.

"In the future, we hope this type of research can help to further understand the causes of brain diseases like psychiatric disorders and Alzheimer's, which can inform the possibility of treating these diseases," said senior author Guo-li Ming, MD, Ph.D., a Perelman Professor of Neuroscience.

**More information:** Yi Zhou et al, Molecular landscapes of human hippocampal immature neurons across lifespan, *Nature* (2022). [DOI: 10.1038/s41586-022-04912-w](https://doi.org/10.1038/s41586-022-04912-w)

Provided by Perelman School of Medicine at the University of Pennsylvania

Citation: Discovery of molecular signatures of immature neurons in human brain provides new insights into brain plasticity (2022, July 18) retrieved 5 July 2023 from <https://medicalxpress.com/news/2022-07-discovery-molecular-signatures-immature-neurons.html>

<p>This document is subject to copyright. Apart from any fair dealing for the purpose of private study or research, no part may be reproduced without the written permission. The content is provided for information purposes only.</p>
--