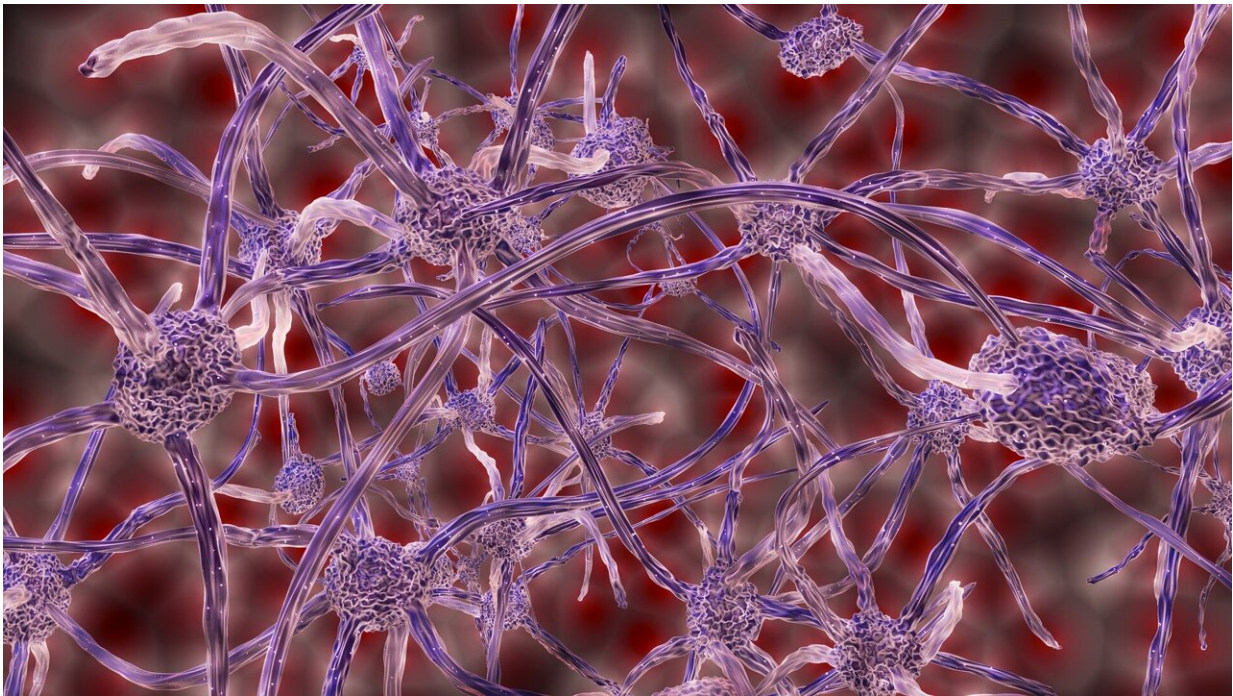


Functional connections between different brain networks can predict a person's age

June 28 2022, by Ingrid Fadelli



Credit: Pixabay/CC0 Public Domain

Neuroscientists have been trying to understand for decades how the human brain changes over the lifespan. This could ultimately help to devise more effective treatments for neurological and cognitive disorders primarily observed in the elderly.

Researchers at Drexel University and Villanova University have recently

carried out a study investigating the relationship between age and the functional coupling between specific neural networks in the [brain](#). Their paper, published in *Psychology and Aging*, shows that the connectivity between certain brain regions can predict people's chronological age with a high level of accuracy.

"A long-standing question in the literature on aging and cognition pertains to [individual differences](#) in [cognitive performance](#) as a function of age," Dr. Evangelia Chrysikou, one of the researchers who carried out the study, told MedicalXpress. "More specifically, What are the factors that determine why younger and [older adults](#) differ in their ability to perform all sorts of memory, attention, or cognitive regulation tasks?"

The differences in cognitive functioning among people of different ages are well documented. The idea that these differences are associated with changes in brain connectivity (i.e., the way in which brain regions and networks communicate with each other) was introduced and discussed in many neuroscience papers.

"Although most of prior literature has focused on how such neural connectivity differences are related to how well younger and older adults do on different cognitive tasks, in our paper we thought to turn the question on its head, so to speak," Chrysikou said. "We asked: Can we use patterns of brain connectivity when people are not doing any tasks to predict their age?"

As part of their study, Chrysikou and her colleagues, Dr. Irene Kan and Dr. Meghan Caulfield, analyzed data collected from a large cohort of 547 participants between 18 and 88 years old, part of a publicly available brain imaging dataset compiled by the [Cambridge Centre for Aging and Neuroscience \(CamCAN\)](#). By analyzing these data, the team firstly investigated whether connectivity between the executive control network (ECN) and default mode network (DMN) regions in the brain can

predict age.

"To do this, we used a well-established statistical technique called multiple [regression analysis](#)," Chrysikou explained. "We further examined how connectivity between ECN, DMN, and another region, the salience network (SN)—which is thought to mitigate how ECN and DMN regions talk to each other—impacts the strength of the connections between ECN and DMN areas."

The analyses carried out by Chrysikou and her colleagues yielded many interesting findings. Most notably, the results showed that the functional connectivity between large-scale brain networks can predict age with good accuracy and that it varies across the lifespan. More specifically, they found that the connectivity between ECN and DMN brain regions accounts for a significant portion of age variability.

Interestingly, the researchers found that when they also included the SN (a set of [brain regions](#) that selects salient external or internal stimuli for the brain to focus its attention on) in their analyses, they could predict a person's age with even greater accuracy. In the future, their work could help to better understand the [brain connectivity](#) patterns associated with the decline in cognitive abilities observed in older age.

"Additional age cohort analyses we conducted further highlighted that these relationships vary across the lifespan," Chrysikou added. "We believe that these findings expand on our current understanding of the variations in large-scale intrinsic network connectivity as a function of healthy aging. Our next step will be to examine these relationships in the context of task performance."

More information: Evangelia G. Chrysikou et al, Large-scale network connectivity as a predictor of age: Evidence across the adult lifespan from the Cam-CAN data set, *Psychology and Aging* (2022). [DOI](#):

[10.1037/pag0000683](https://doi.org/10.1037/pag0000683)

© 2022 Science X Network

Citation: Functional connections between different brain networks can predict a person's age (2022, June 28) retrieved 5 October 2023 from

<https://medicalxpress.com/news/2022-06-functional-brain-networks-person-age.html>

This document is subject to copyright. Apart from any fair dealing for the purpose of private study or research, no part may be reproduced without the written permission. The content is provided for information purposes only.