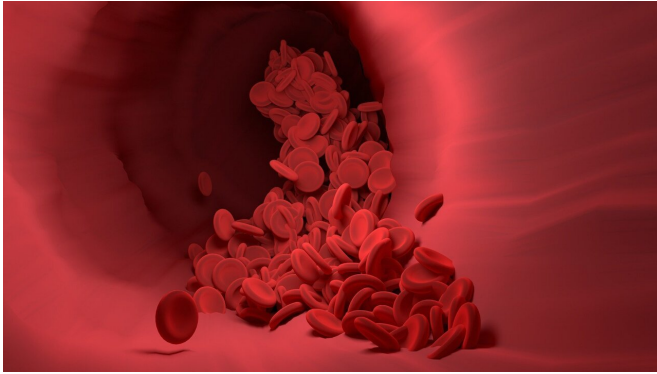


Researchers discover rare cells capable of transforming into blood cancer

27 June 2022



Credit: CC0 Public Domain

Dysfunction involving an unusual type of thymocyte cell found in small amounts in every person may be the reason why some people develop a form of leukemia called T-cell acute lymphoblastic leukemia (T-ALL) that affects more than 6,000 Americans each year.

Researchers from the University of Missouri School of Medicine and College of Engineering characterized the thymocyte [cells](#)—an immune cell present in the thymus—while studying mice with T-ALL. They determined all of the rodent tumors originated from the same type of T cell that expresses a unique set of molecular markers.

"Once we identified the cell in mice, we wondered if humans have that same cell type and in the same quantity," said senior author Adam Schrum, Ph.D., associate professor of bioengineering, molecular microbiology and immunology, and surgery. "The human samples we obtained contained the same T cells and in the exact quantity found in mice."

That rare cell, which makes up just 0.01% of all cells in the [thymus gland](#), became known as

"EADN." Schrum's team next wanted to know if every human T-ALL case originated from EADN.

"Over a three-year period, we examined five T-ALL cases at University of Missouri Health Care," Schrum said. "We looked at cell samples from each patient and discovered one of those five cases seems to have originated from an EADN cell. We're not saying that EADN is the only cell that causes this type of cancer, but our findings show it is responsible for some cases. This is a very exciting discovery."

Schrum's team also found something else unique about EADN cells. A molecule called major histocompatibility complex (MHC), which drives autoimmunity and other immune responses, is what signals EADN cells to turn into cancer in mice.

"It's like an auto-immune reaction that causes EADN to turn into cancer," Schrum said. "Many other cells in the thymus cannot do this. Now that we've determined the signals required for this transformation, this discovery could point to potential strategies to treat it."

Schrum said the next step is to determine how frequently human T-ALL cases originate from EADN cells, in hopes of learning how to better personalize treatments for each person's unique cancer case.

Highlighting the promise of personalized [health care](#) and the impact of large-scale interdisciplinary collaboration, the NextGen Precision Health initiative is bringing together innovators from across the University of Missouri and the UM System's three other research universities in pursuit of life-changing precision health advancements. It's a [collaborative effort](#) to leverage the research strengths of Mizzou toward a better future for the health of Missourians and beyond. The Roy Blunt NextGen Precision Health building at MU anchors the overall initiative and expands collaboration

between researchers, clinicians and industry partners in the state-of-the-art research facility.

Schrum's MU research team included Kimberly Laffey, Ph.D., postdoctoral fellow; Richard Hammer, MD, professor of pathology; Venkataraman Ramachandran, MD, associate professor of clinical surgery and [child health](#); Jenna Canfield, immunology graduate student; Cory Johnson, clinical technician; and Diana Gil Pages, Ph.D., associate professor of bioengineering, molecular microbiology and immunology, and surgery.

Their study, "Early expression of mature alpha beta TCR in CD4- CD8- T cell progenitors enables MHC to drive development of T-ALL bearing NOTCH mutations," was recently published in the journal *Proceedings of the National Academy of Sciences*.

More information: Early expression of mature alpha beta TCR in CD4- CD8- T cell progenitors enables MHC to drive development of T-ALL bearing NOTCH mutations, *Proceedings of the National Academy of Sciences* (2022).

Provided by University of Missouri

APA citation: Researchers discover rare cells capable of transforming into blood cancer (2022, June 27) retrieved 1 July 2022 from <https://medicalxpress.com/news/2022-06-rare-cells-capable-blood-cancer.html>

This document is subject to copyright. Apart from any fair dealing for the purpose of private study or research, no part may be reproduced without the written permission. The content is provided for information purposes only.