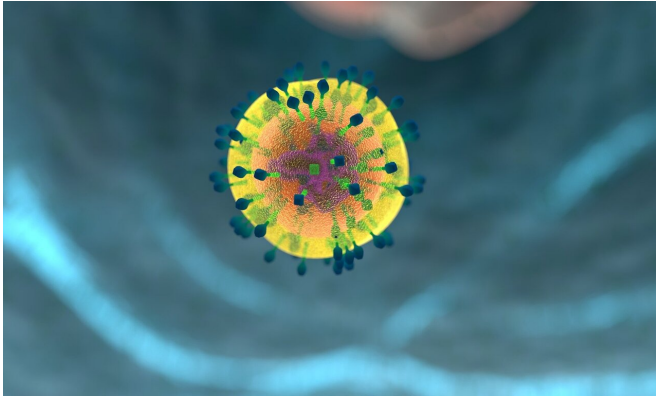


Immune therapy targets cells that cause leukemia relapse

2 June 2022



Credit: CC0 Public Domain

Genetically engineered immune cells successfully target the specific cancer cells that may be responsible for relapse of acute myeloid leukemia (AML), a type of blood cancer, and proved effective in animal models of the disease, according to a preclinical study by investigators at Weill Cornell Medicine. The new cell therapy, now being tested in phase 1 clinical trials, may ultimately help patients with AML to remain cancer-free.

In the study, published April 28 in *Nature Communications*, the researchers used an approach in which [immune cells](#) known as T cells are directed to produce proteins called chimeric antigen receptors, or CARs, that enable the T cells to recognize specific markers on cancer cells. In this case, the CAR is a receptor that binds to the CD123 molecule on [leukemia stem cells](#), enabling the T cells to seek out and attack the cancer cells.

"Leukemia stem cells are a subset of leukemic cells that are resistant to standard chemotherapy drugs and can cause disease relapse," said co-senior author Dr. Monica L. Guzman, associate professor of pharmacology in medicine in the

Division of Hematology & Medical Oncology and a member of the Sandra and Edward Meyer Cancer Center at Weill Cornell Medicine. "CD123 is a marker found on leukemia stem cells, and my laboratory has been working on designing mouse models to test new CD123-targeted anti-leukemia therapies."

Although there are effective therapies to treat AML, the disease eventually recurs in most patients even after achieving complete remission. By engineering T cells to express a CAR that targets CD123, Dr. Guzman and her colleagues hope to rid patients of any remaining leukemia stem cells. CAR T cells are an attractive anti-cancer therapy because they can be grown in large numbers in the laboratory.

"The CAR T cells—called UCART123 cells—used in this study have several very important features," said Dr. Guzman. "They target a leukemia stem cell marker, they are derived from healthy donors and manufactured to be 'off the shelf' and ready-to-go for patients when needed, they are specially designed to try to minimize toxicity, and they can be eliminated using a drug called rituximab in case of excessive proliferation."

When the team tested the UCART123 cells in a mouse model of AML, they found that the therapy effectively eliminated leukemia cells and prolonged survival. The scientists also designed an ultra-sensitive monitoring strategy to detect any residual [cancer cells](#) and to assess the persistence of UCART123 cells. Finally, they demonstrated that UCART123 cells have specificity against [leukemia](#) cells, with minimal toxicity to normal blood cells in mice.

The preclinical results have led to a phase 1 clinical trial testing UCART123 in patients with relapsed/refractory AML at several sites across the United States, including New York-Presbyterian/Weill Cornell Medical Center. "These laboratory data strongly support the ongoing clinical

trial," said trial principal investigator and senior co-author Dr. Gail Roboz, director of the Clinical and Translational Leukemia Program at Weill Cornell Medicine and an oncologist at NewYork-Presbyterian/Weill Cornell Medical Center.

"The results of the [preclinical study](#) suggest that UCART123 cells are highly selective and specific in targeting AML, and we anticipate that the techniques developed in Dr. Guzman's lab will help us monitor patients undergoing treatment with UCART123 and optimize their likelihood of success," said Dr. Roboz, who is also professor of medicine in the Division of Hematology & Medical Oncology and a member of the Meyer Cancer Center at Weill Cornell Medicine.

More information: Mayumi Sugita et al, Allogeneic TCR?? deficient CAR T-cells targeting CD123 in acute myeloid leukemia, *Nature Communications* (2022). [DOI: 10.1038/s41467-022-29668-9](#)

Provided by Weill Cornell Medical College

APA citation: Immune therapy targets cells that cause leukemia relapse (2022, June 2) retrieved 6 October 2022 from <https://medicalxpress.com/news/2022-06-immune-therapy-cells-leukemia-relapse.html>

This document is subject to copyright. Apart from any fair dealing for the purpose of private study or research, no part may be reproduced without the written permission. The content is provided for information purposes only.