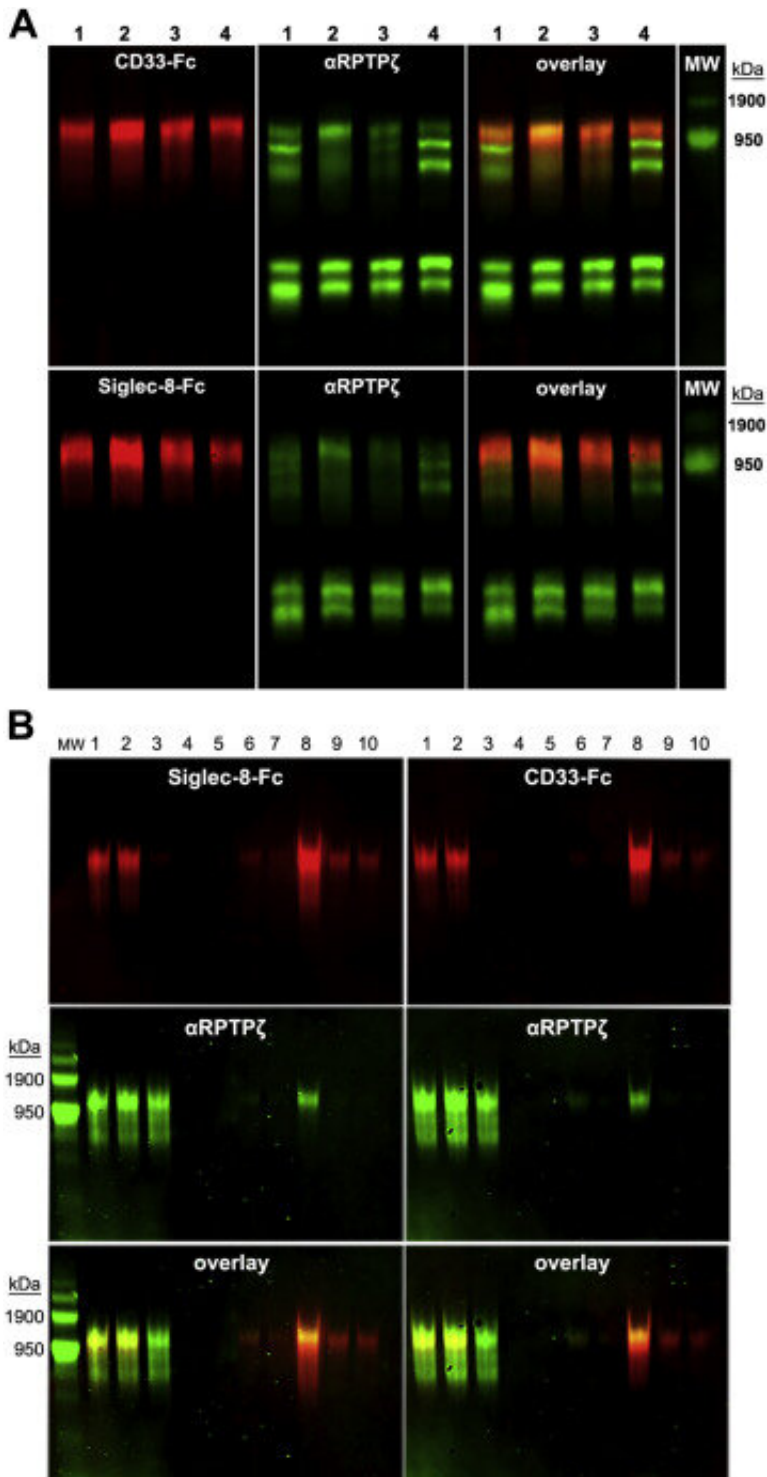


Researchers link sugar-studded protein to Alzheimer's disease

May 27 2022



The same glycoform of RPTP ζ carries CD33 and Siglec-8 ligands. A, equal aliquots of human cerebral cortex total protein extract from four donors (numbered) were resolved on replicate composite agarose–acrylamide gels and blotted to PVDF. One blot (upper panels) was double-label probed with CD33-Fc (red) and anti-RPTP ζ (green) and a replicate blot (lower panels) with

Siglec-8-Fc (red) and anti-RPTP ζ (green). B, human cerebral cortex extract was size excluded (not shown) and subjected to affinity capture purification as for Figure 3. Equal aliquots of samples from affinity capture were resolved on replicate composite agarose–acrylamide gels, blotted to PVDF, and double-label probed with Siglec-8-Fc (red) and anti-RPTP ζ (green) or with CD33-Fc (red) and anti-RPTP ζ (green) as indicated. Lanes: (1) precapture; (2) precleared on IgG beads; (3) flow through (unbound) Siglec-8-Fc beads; (4–7) low salt washes; and (8–10) high salt elutions. The double-label gels carried custom molecular weight markers visible in the green images only. IgG, immunoglobulin G; PVDF, polyvinylidene fluoride; RPTP ζ , receptor protein tyrosine phosphatase zeta; Siglec, sialic acid–binding immunoglobulin-type lectin. Credit: *Journal of Biological Chemistry* (2022). DOI: 10.1016/j.jbc.2022.101960

In a bit of "reverse engineering" research using brain tissues from five people who died with Alzheimer's disease, Johns Hopkins Medicine researchers say they discovered that a special sugar molecule could play a key role in the development of Alzheimer's disease. If further research confirms the finding, the molecule, known as a glycan, could serve as a new target for early diagnostic tests, treatments and perhaps prevention of Alzheimer's disease, say the researchers.

The study was published online April 20 in the *Journal of Biological Chemistry*.

Alzheimer's disease is the most common form of dementia in the United States. Affecting an estimated 5.8 million Americans, the progressive disorder occurs when [nerve cells](#) in the brain die due to the buildup of harmful forms of proteins called amyloid and tau.

Cleaning up the disease-causing forms of amyloid and tau is the job of the brain's [immune cells](#), called microglia. Earlier studies found that when cleanup is impaired, Alzheimer's disease is more likely to occur. In

some people, this is caused by an overabundance of a receptor on the microglia cells, called CD33.

"Receptors are not active on their own. Something needs to connect with them to block microglia from cleaning up these toxic proteins in the brain, says Ronald Schnaar, Ph.D., the John Jacob Abel Professor of Pharmacology at the Johns Hopkins University School of Medicine and director of the laboratory that led the study.

Past studies by the researchers showed that for CD33, these "connector" molecules are special sugars. Known to scientists as glycans, these molecules are ferried around the cell by specialized proteins that help them find their appropriate receptors. The protein-[glycan](#) combination is called a [glycoprotein](#).

In a bid to find out which specific glycoprotein connects with CD33, Schnaar's research team obtained brain tissue from five people who died of Alzheimer's disease and from five people who died from other causes from the Johns Hopkins Alzheimer's Disease Research Center. Among the many thousands of glycoproteins they gathered from the brain tissues, only one connected to CD33.

To identify this mystery glycoprotein, the researchers first needed to separate it from the other brain glycoproteins. Since it was the only one in the brain that attached itself to CD33, they used this feature to "catch" it and separate it.

Glycans are made up of various sugar building blocks that influence the molecule's interactions. Such sugars can be identified by their component parts. The researchers used chemical tools to deconstruct the glycan step by step, laying out the identity and order of its building blocks. The researchers identified the glycan portion of the glycoprotein as sialylated keratan sulfate.

Then, the researchers determined the protein component's identity by taking its "fingerprint" using mass spectroscopy, which identifies protein building blocks. By comparing the molecular makeup of the protein with a database of known protein structures, the research team was able to conclude the protein portion of the glycoprotein was receptor tyrosine phosphatase (RPTP) zeta.

The researchers named the combined glycoprotein structure RPTP zeta S3L.

The group had previously found the same glycan "signature" on a [protein](#) that controls allergic responses in the airway, and that disrupting the glycan dampened allergic responses in mice.

"We suspect the glycan signature carried on RPTP zeta may have a similar role in deactivating microglia through CD33," says Anabel Gonzalez-Gil Alvarenga, Ph.D., postdoctoral fellow in the Schnaar laboratory and first author of the study.

Further experiments showed that the [brain tissue](#) of the five people who died with Alzheimer's disease had more than twice as much RPTP zeta S3L as the donors who did not have the disease. This implies that this glycoprotein may be connecting with more CD33 receptors than a healthy brain, limiting the [brain](#)'s ability to clean up harmful proteins.

"Identifying this unique glycoprotein provides a step toward finding new drug targets and potentially early diagnostics for Alzheimer's disease," says Gonzalez-Gil.

Next, the researchers plan to further study RPTP zeta S3L's structure to determine how its attached glycans give the glycoprotein its unique ability to interact with CD33.

More information: Anabel Gonzalez-Gil et al, Human brain sialoglycan ligand for CD33, a microglial inhibitory Siglec implicated in Alzheimer's disease, *Journal of Biological Chemistry* (2022). [DOI: 10.1016/j.jbc.2022.101960](https://doi.org/10.1016/j.jbc.2022.101960)

Provided by Johns Hopkins University School of Medicine

Citation: Researchers link sugar-studded protein to Alzheimer's disease (2022, May 27) retrieved 17 July 2023 from <https://medicalxpress.com/news/2022-05-link-sugar-studded-protein-alzheimer-disease.html>

This document is subject to copyright. Apart from any fair dealing for the purpose of private study or research, no part may be reproduced without the written permission. The content is provided for information purposes only.