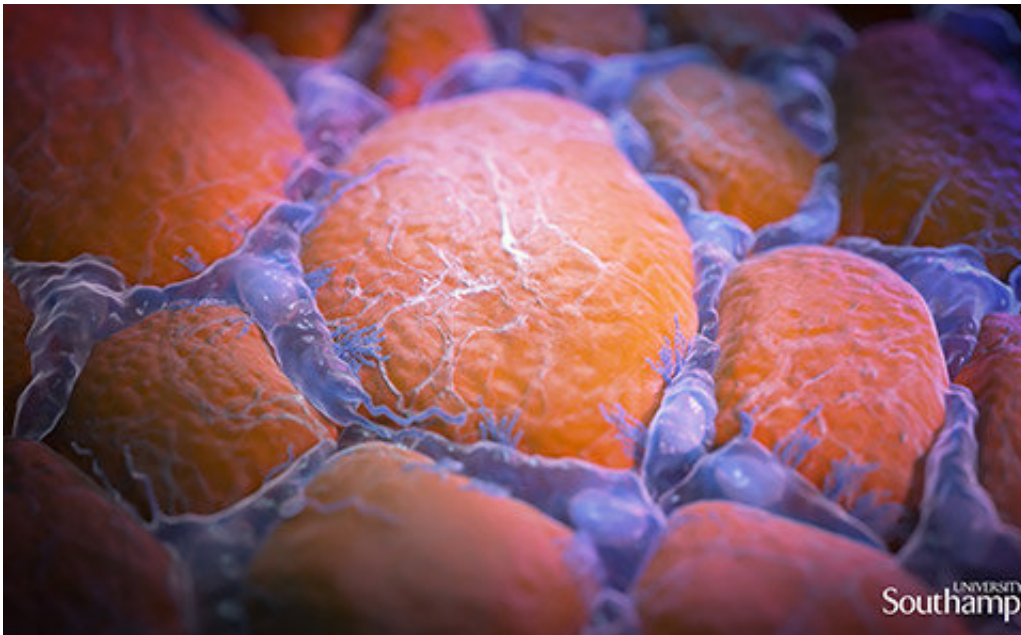


A potential new marker for personalized breast cancer therapy

May 24 2022



Inflammatory macrophages form on crown like structures surrounding breast tissue. Credit: University of Southampton

A new study from the University of Southampton has discovered that "crown-like structures" surrounding breast tumors in overweight and obese patients could hinder their response to therapy. The findings of this study could potentially be used to improve personalized treatment for patients with HER2 positive overexpressed breast cancer.

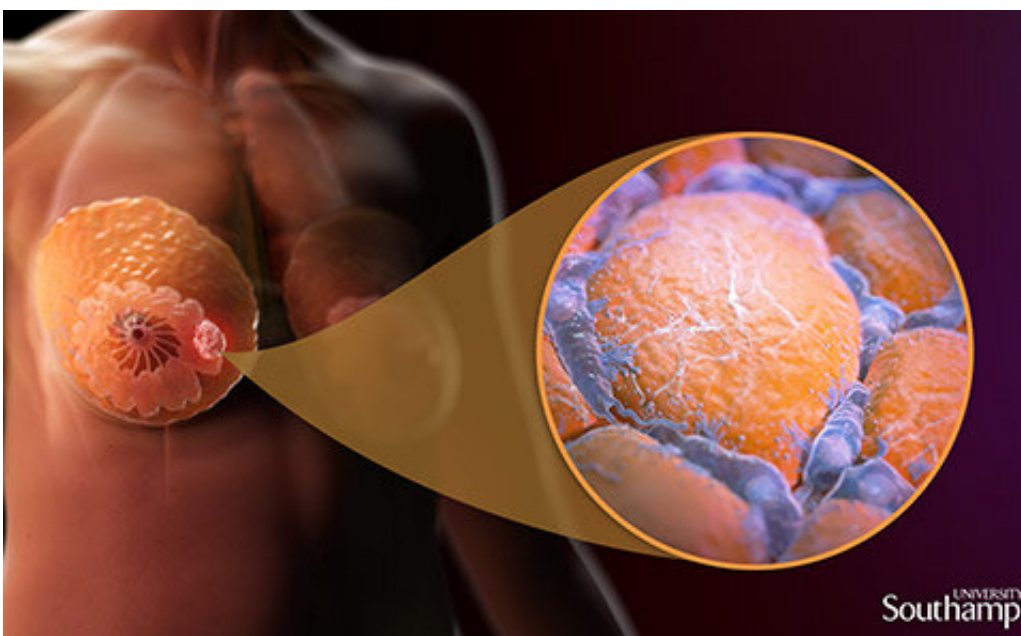
Adipose tissue, or [body fat](#), is an important component of the healthy

human breast and yet high body mass index (BMI) is associated with increased risk of developing breast [cancer](#). Overweight patients also have worse survival rates than patients with healthy body weight.

In patients with a high BMI, increased body fat surrounding the breast can cause inflammatory immune cells, called macrophages, to gather in the breast's fat tissue. These macrophages can then form what are called "crown-like structures" by surrounding these fat cells. This creates an inflammatory environment in the breast which can lead to the onset and growth of tumors.

How these crown-like structures go on to affect breast cancer progression and respond to therapy is largely unknown.

The research team, led by Professors Stephen Beers, Ramsey Cutress and Dr. Charles Birts, assessed samples from a group of HER2 positive breast cancer patients to investigate the link between high BMI and the formation of crown-like structures, and the subsequent effect of these on how patients responded to therapy with a drug called trastuzumab (Herceptin).

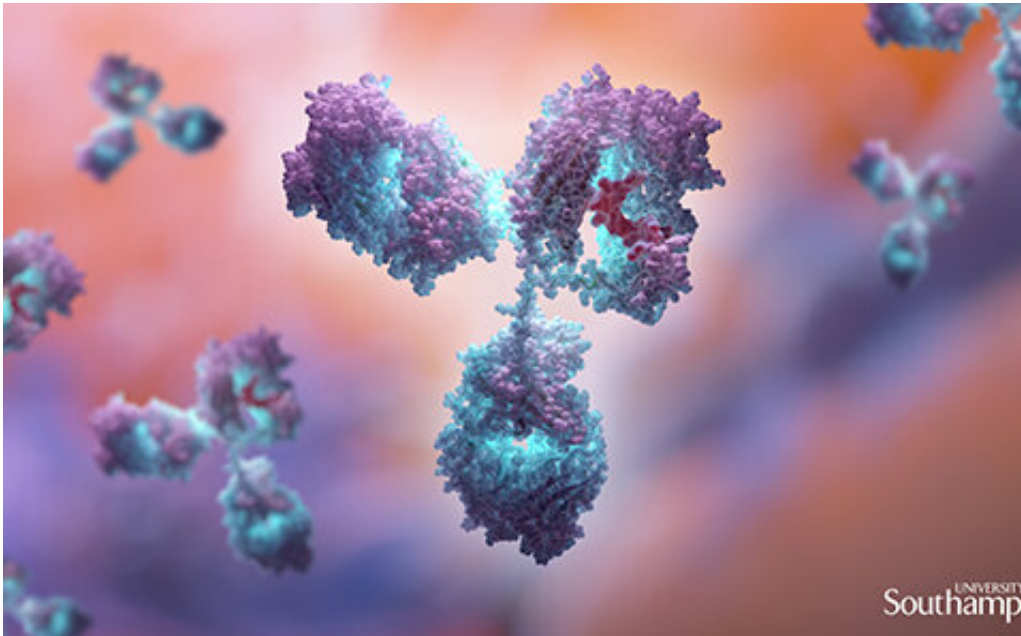


The crown like structure in the human anatomy. Credit: University of Southampton

The results, published in the journal *Scientific Reports*, showed that patients who were overweight or obese had significantly more crown-like structures in their fat tissue surrounding the tumor and that this was associated with a faster time to metastatic disease—an indication of how well the patients have responded to therapy.

They then went on to identify a potential molecular biomarker, called CD32B, on the surface of the macrophages in these crown-like structures. When this marker was present in overweight and [obese patients](#), their response to trastuzumab therapy was poorer.

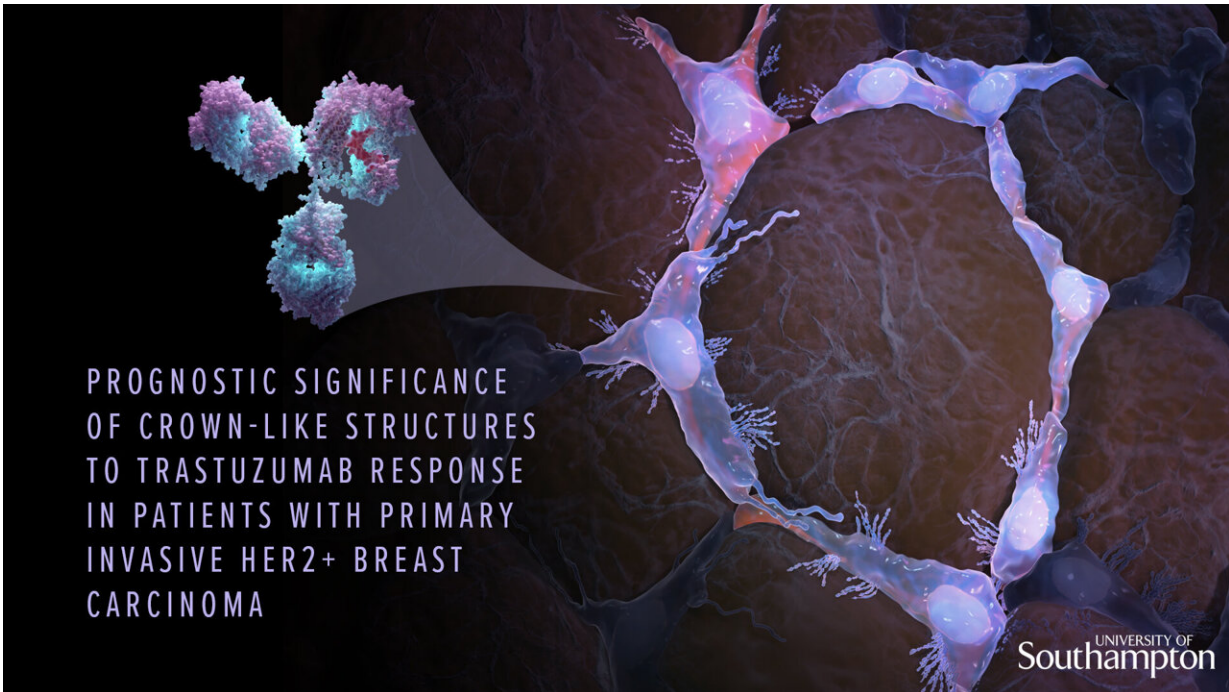
Stephen Beers, Professor of Immunology and Immunotherapy at the University of Southampton said, "These findings will be of interest to clinicians and researchers involved in breast cancer treatment as they could potentially be used to develop personalized treatment for patients with HER2 positive overexpressed breast cancer."



Trastuzumab (Herceptin®) is used to treat breast cancer. Credit: University of Southampton



Credit: University of Southampton



Credit: University of Southampton

"For example, doctors would know that patients with a high BMI and the marker on their crown-like structures are likely to have a poor response to trastuzumab therapy. They may therefore benefit from more intensive anti-HER2 therapy earlier in their treatment.

"On the other hand, this study highlights how effective trastuzumab treatment is in patients that do not have the marker. So these patients could benefit from a lower dose of anti-HER2 therapy which may minimize the side-effects they experience. Further studies with more patients will be needed to help confirm these initial findings."

The research team are now looking at ways to change the behavior of these crown-like structures to improve responses to [breast cancer](#) therapy.

More information: Charles N. Birts et al, Prognostic significance of crown-like structures to trastuzumab response in patients with primary invasive HER2 + breast carcinoma, *Scientific Reports* (2022). [DOI: 10.1038/s41598-022-11696-6](#)

Provided by University of Southampton

Citation: A potential new marker for personalized breast cancer therapy (2022, May 24) retrieved 21 November 2023 from <https://medicalxpress.com/news/2022-05-potential-marker-personalized-breast-cancer.html>

This document is subject to copyright. Apart from any fair dealing for the purpose of private study or research, no part may be reproduced without the written permission. The content is provided for information purposes only.