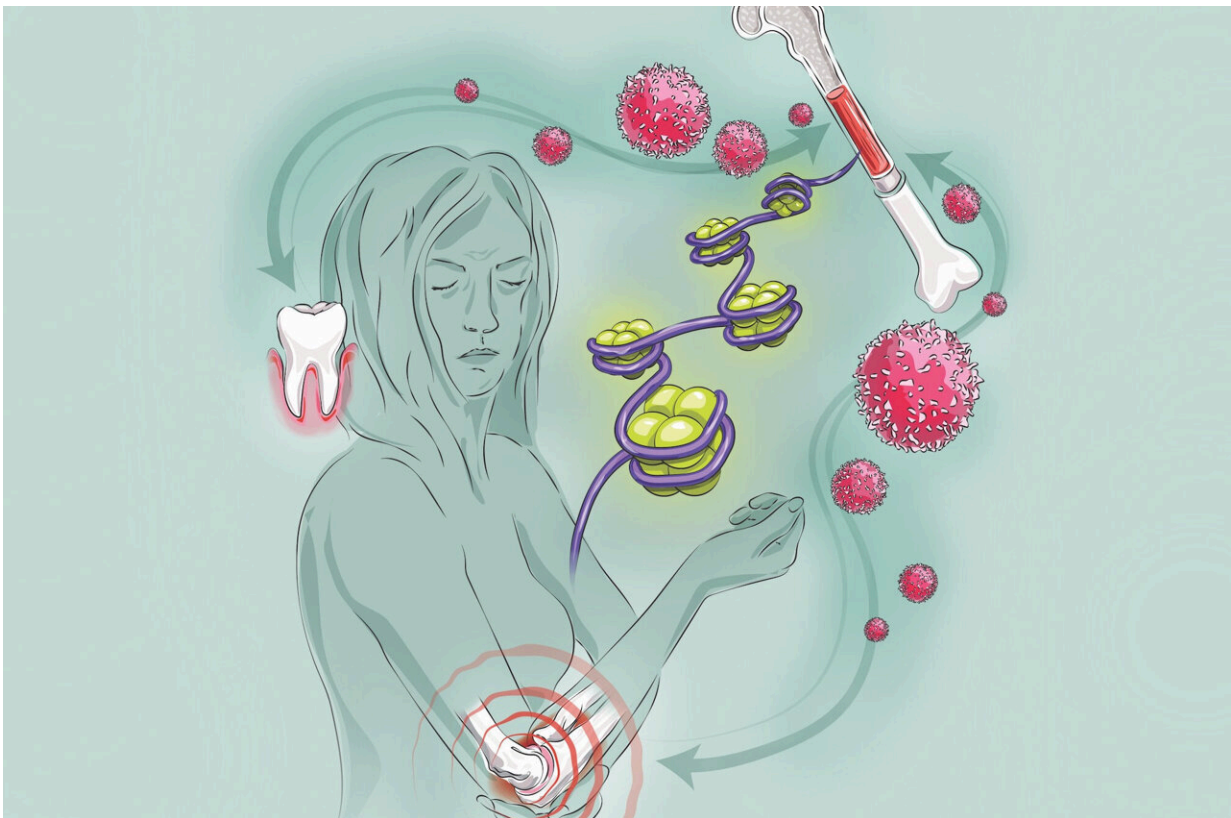


How one inflammatory disorder exacerbates another

April 27 2022, by Katherine Unger Baillie



Inflammation in the gums can increase susceptibility to other forms of inflammation, such as arthritis, through changes to immune cell precursors in the bone marrow, according to new research led by Penn scientists and collaborators. Credit: Katie Vicari

The immune system remembers. Often this memory, primed by past

encounters with threats like bacteria or viruses, is an asset. But when that memory is sparked by internal drivers, like chronic inflammation, it can prove detrimental, perpetuating a misguided immune response.

In a new paper in *Cell*, researchers from the School of Dental Medicine, together with an international team including colleagues at the Technical University of Dresden, lay out the mechanism by which innate immune memory can cause one type of inflammatory condition—in this example, [gum disease](#)—to increase susceptibility to another—here, arthritis—through alterations to immune cell precursors in the bone marrow. In a [mouse model](#), the team demonstrated that recipients of a [bone marrow transplant](#) were predisposed to more severe arthritis if their donor had inflammatory gum disease.

"Although we use periodontitis and arthritis as our model, our findings go above and beyond these examples," says George Hajishengallis, a professor in Penn Dental Medicine and a corresponding author on the work. "This is in fact a central mechanism, a unifying principle underlying the association between a variety of comorbidities."

The researchers note that this mechanism may also prompt a reconsideration of how bone marrow donors are selected, as donors with certain types of immune memory caused by underlying inflammatory conditions might put bone marrow transplant recipients at a higher risk of inflammatory disorders.

Basis in the bone marrow

In previous work, Hajishengallis had partnered with co-corresponding author Triantafyllos Chavakis of Technical University of Dresden and collaborators to explore the role of innate immune memory. Their findings showed that, just like the adaptive [immune system](#)'s T cells and B cells, the innate immune system's myeloid cells, such as neutrophils

and macrophages, could "remember" past encounters, becoming more responsive when exposed to a new threat. The work also pinpointed how this memory was encoded, tracing it to the bone marrow, and showed that this "trained immunity" could be transferred from one organism to another through a bone marrow transplant, protecting recipients from cancer through an innate [immune response](#).

While that is good news, Hajishengallis and Chavakis also believed that trained immunity could be detrimental in the right contexts. While attending a meeting on innate immunity in Greece in 2019, the two scientists brainstormed over dinner at an outdoor tavern, jotting down their thoughts on a napkin. They later formalized some of their hypotheses about this potential "dark side" of trained immunity in a publication in *Nature Reviews Immunology* in 2021.

"The thoughts went like this: We knew the gum disease periodontitis increased the risk of comorbidities like cardiovascular disease," says Hajishengallis. "And the reverse is also true: People with the inflammatory disease colitis, for example, have an increased prevalence of periodontal disease. Different mechanisms have been proposed, but no one unifying mechanism could explain this bidirectionality."

"We started thinking about a possible unifying mechanism that could underlie the association between several distinct comorbidities," says Chavakis.

Building on their earlier discovery related to "trained" precursors in the bone marrow, the scientists set out to see whether they could trace the source of the association between comorbidities to the innate immune training they already knew was happening in the bone marrow.

Setting out to test this hypothesis, the team first showed that, within a week of inducing a mouse to have periodontal disease, the animal's

myeloid cells and their progenitor cells expanded in the bone marrow. Examining these cells weeks later, after periodontitis was intentionally resolved, the researchers did not notice significant changes in how the cells looked or behaved.

However, these [progenitor cells](#) appeared to have memorized the inflammation they were exposed to, as they harbored important epigenetic changes: alterations in molecular markers that affect the ways genes are turned on and off but do not alter the actual DNA sequence. The researchers found that these alterations, triggered by inflammation, could alter the manner in which the genes would be expressed after a future challenge. The overall pattern of epigenetic changes, the researchers noted, was associated with known signatures of the inflammatory response.

Mice with induced periodontal disease also had more severe responses to a later immune system challenge, evidence of trained immunity.

To put the whole picture together regarding the link between inflammatory conditions, the "critical experiment," as Hajishengallis explains, was a bone marrow transplant. Mice that had periodontitis, a severe form of gum disease, served as donors, as did a group of healthy mice serving as controls. Two hundred stem cells from their bone marrow were transplanted into mice that had never had gum disease and which had had their own bone marrow irradiated. A few months later, these mice were exposed to collagen antibodies, which trigger arthritis.

"Mice that received the transplant from mice with periodontitis developed more severe arthritis than mice that received a donation of stem cells from periodontally healthy mice," says Hajishengallis.

"And higher joint inflammation in recipient mice was due to inflammatory [cells](#) deriving from the periodontitis-trained [stem cells](#),"

says Chavakis.

Further experiments suggested that the [signaling pathway](#) governed by a receptor for the molecule IL-1 played a vital role in contributing to this inflammatory memory. Mice that lacked IL-1 receptor signaling could not generate the immune memory that made the recipient mice more susceptible to comorbidities, the researchers found.

Clinical implications

The work has implications for [bone](#) marrow transplants in humans, a common course of therapy in addressing blood cancers.

"Of course, it's a great thing if you find a matching donor for [bone marrow](#) transplantation," says Hajishengallis. "But our findings suggest that it's important for clinicians to keep in mind how the medical history of the donor is going to affect the health of the recipient."

The work also underscores that blocking IL-1 receptor signaling could be an effective approach to mitigate against these knock-on effects of trained immunity.

"We've seen anti-IL-1 antibodies used in clinical trials for atherosclerosis with excellent results," Hajishengallis says. "It could be that it was in part because it was blocking this maladaptive trained immunity."

Follow-up projects are examining how other inflammatory conditions, may be linked with periodontal disease, a sign, the researchers say, of how crucial oral health is to overall health.

"I'm proud for the field of dentistry that this work, with significance to a wide range of medical conditions, began by investigating oral health," Hajishengallis says.

More information: Xiaofei Li et al, Maladaptive innate immune training of myelopoiesis links inflammatory comorbidities, *Cell* (2022). [DOI: 10.1016/j.cell.2022.03.043](https://doi.org/10.1016/j.cell.2022.03.043)

George Hajishengallis et al, Local and systemic mechanisms linking periodontal disease and inflammatory comorbidities, *Nature Reviews Immunology* (2021). [DOI: 10.1038/s41577-020-00488-6](https://doi.org/10.1038/s41577-020-00488-6)

Provided by University of Pennsylvania

Citation: How one inflammatory disorder exacerbates another (2022, April 27) retrieved 21 November 2023 from <https://medicalxpress.com/news/2022-04-inflammatory-disorder-exacerbates.html>

This document is subject to copyright. Apart from any fair dealing for the purpose of private study or research, no part may be reproduced without the written permission. The content is provided for information purposes only.