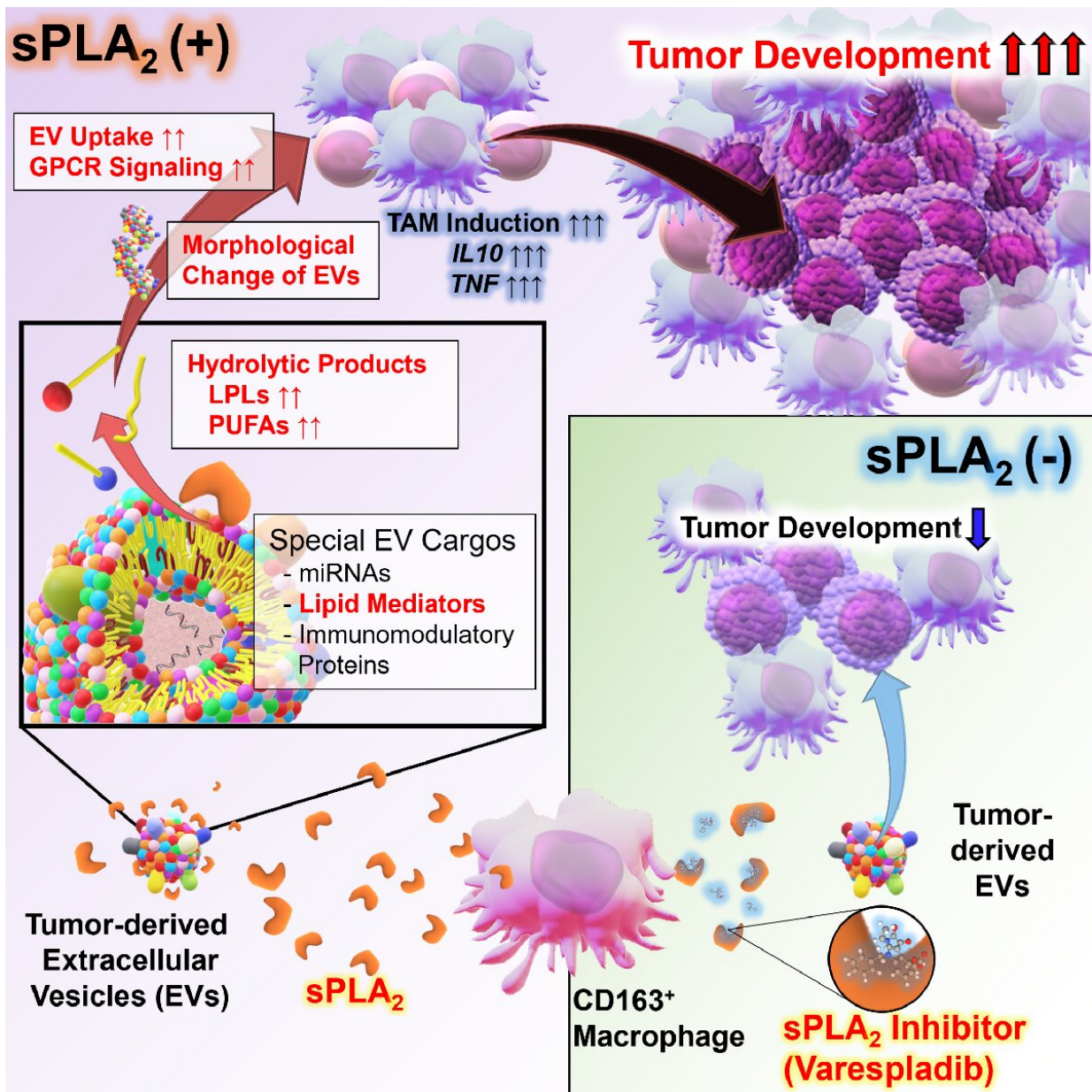


New oncogenic mechanisms in lymphoma identified via extracellular vesicles

March 28 2022



In tumorigenesis, sPLA₂ is secreted by tumor-associated macrophages in tumor tissue. When the membrane phospholipids of EVs secreted from tumor cells are modified by sPLA₂, various fatty acids and lysophospholipids are liberated, leading to changes in EV morphology and GPCR signaling enhancement, accelerated uptake, etc. are induced. As a result, the establishment of the tumor microenvironment is rapidly accelerated, leading to tumorigenesis. In contrast, inhibition of this sPLA₂-EV axis by varespladib, an sPLA₂ inhibitor, suppressed tumor formation. Thus, the sPLA₂-EV axis may be a novel drug target for cancer therapy. Credit: Kai Kudo

Japanese collaborative research teams have discovered new mechanisms of action by extracellular vesicles (EV) for the development and malignant progression of lymphomas.

Professor Ai Kotani and Kai Kudo, a graduate student, at the Tokai University has been investigating the roles of EV in the development of Epstein-Barr virus (EBV)-positive B-cell malignant lymphomas, but the mechanism of its action has not been fully clarified. Meanwhile, Professor Makoto Murakami and Yoshimi Miki researcher at the University of Tokyo has been clarifying a number of vital phenomena to which secretory phospholipase A₂ (sPLA₂) is involved. sPLA₂ is a phospholipid-degrading enzyme existing in the extracellular environment; however, the source of the phospholipids that sPLA₂ uses as a substrate outside cells has been unknown.

In this study, the research groups demonstrated that sPLA₂ secreted from tumor-associated macrophage (TAM) in malignant lymphoma tissue degrades phospholipid of EV derived from [tumor cells](#). They also found that this degradation dramatically improves EV function, such as ease of cellular uptake and immunosuppressive effect, and induction of various vital phenomena. Moreover, they discovered that lysophospholipids, degraded products of EV phospholipids, transmit signals to cells,

namely, novel mechanisms of action that have not been known in EV biology. Using model mice that reproduce the development of lymphomas in humans, the research groups demonstrated that EV-degradation by sPLA₂ is essential for tumorigenesis. Analysis of samples from patients with lymphoma also showed that sPLA₂ is involved in tumorigenesis and malignant progression.

On the other hand, the study demonstrated that not only [lymphoma](#)-derived EVs but also EVs derived from other [cancer cells](#) are degraded by sPLA₂ and revealed that the sPLA₂-EV axis is a common phenomenon in tumorigenesis. Therefore, it is expected that this sPLA₂-EV axis will become a new drug target for [cancer treatment](#) as a new "immune checkpoint." In addition, based on sPLA₂'s EV function enhancement demonstrated in this study, they are currently testing hypotheses that sPLA₂ may enhance inherent abilities of various types of EV, such as EV with tissue protecting and anti-inflammatory effects, previously reported by the Kotanis group, and further development for therapeutic applications in the future is expected.

More information: Kai Kudo et al, Secreted phospholipase A2 modifies extracellular vesicles and accelerates B cell lymphoma, *Cell Metabolism* (2022). [DOI: 10.1016/j.cmet.2022.02.011](https://doi.org/10.1016/j.cmet.2022.02.011)

Provided by Japan Science and Technology Agency

Citation: New oncogenic mechanisms in lymphoma identified via extracellular vesicles (2022, March 28) retrieved 12 July 2023 from <https://medicalxpress.com/news/2022-03-oncogenic-mechanisms-lymphoma-extracellular-vesicles.html>

This document is subject to copyright. Apart from any fair dealing for the purpose of private study or research, no part may be reproduced without the written permission. The content is provided for information purposes only.