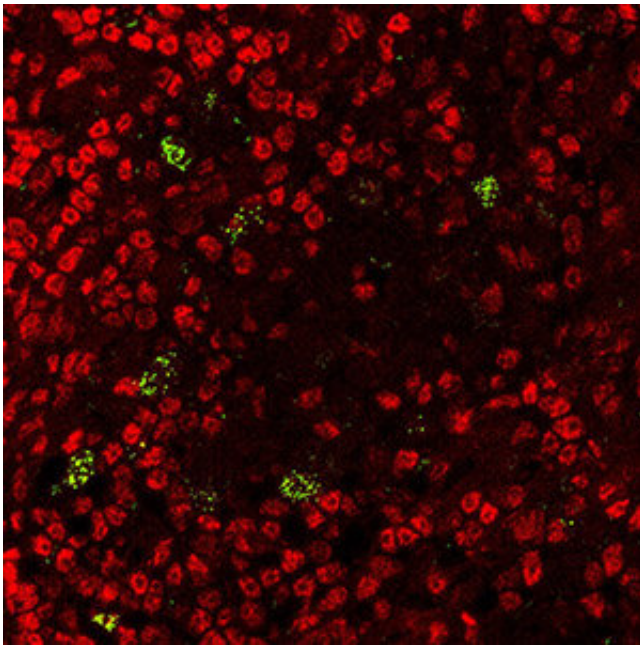


# 'Boot camp' enzyme prevents autoimmune conditions

January 31 2022

---



Thymus cells making AIRE (green) that educate the surrounding developing T cells (red). Credit: Walter and Eliza Hall Institute of Medical Research

WEHI researchers have identified an enzyme in the thymus that is essential for immune T cells to correctly identify threats, safeguarding them from going rogue and attacking healthy tissue in the body.

The thymus is an important organ where immune T [cells](#) learn to fight infection. The new findings revealed that the enzyme KAT7 is necessary to activate thousands of genes required for 'training' immune T cells not

to attack healthy tissue. Without proper training, immune T cells are at risk of sabotaging the [immune system](#) which could lead to autoimmune conditions such as type 1 diabetes, or multiple sclerosis.

Published in *Science Immunology*, the research paves the way for potential treatments to target KAT7, which could modify the training of immune T cells as needed. Such treatments could be used to either restrain immune T cells from driving autoimmune conditions, or to supercharge immune T cells to better fight diseases such as cancer.

The research was led by former WEHI Ph.D. student Dr. Melanie Heinlein, along with Associate Professor Tim Thomas and Associate Professor Daniel Gray from WEHI, in collaboration with researchers at Monash University and the Weizmann Institute of Science in Israel.

## **A 'preview' of threats**

The thymus is like a 'boot camp' where immune T cells are trained to identify and fight pathogens, and taught not to attack healthy organs. As part of this preparation, immune T cells are shown a 'preview' of all the various components of healthy tissues they could encounter once they exit the thymus.

While it was previously known that the Autoimmune Regulator (AIRE) protein activated the thousands of genes needed for this preview, it was unclear how AIRE knew which genes it needed to 'switch on,' until now.

Dr. Melanie Heinlein said the new findings revealed that the enzyme KAT7 was crucial for determining which genes AIRE needed to activate for immune T cells to be properly trained.

"Like a training coordinator, KAT7 directs AIRE to the thousands of

genes that must be activated for the 'boot camp' to run smoothly. KAT7 does this by tagging the genes that AIRE needs to 'switch on' for the preview of the body's proteins to work. When all goes to plan, immune T cells are trained not to fight any normal tissues they could encounter in the body, ensuring they do not cause autoimmune disease," she said.

## **Importance of KAT7**

Associate Professor Tim Thomas said KAT7's crucial role in keeping immune T cells to task was made clear when the researchers used a new drug to block its function.

"We showed how a KAT7 inhibitor, developed in collaboration with Jonathan Baell at Monash University, was able to stop AIRE from switching on the genes needed to properly train immune T cells. Stopping this process sent the immune system into overdrive, leading to immune T cells going rogue and causing a range of autoimmune conditions in pre-clinical models. This shows a clear link between KAT7 and AIRE in maintaining immune tolerance," he said.

"This has been a wonderful team effort. The highly collaborative study was made possible with expertise from across WEHI's Flow Cytometry Laboratory, Genomics Facility, and the Centre for Dynamic Imaging, along with colleagues from Monash University and the Weizmann Institute of Science in Israel."

## **Exciting treatment potential**

Associate Professor Daniel Gray said the discovery could lead to new treatments for restraining immune T cells in order to prevent autoimmune conditions, or for supercharging immune T cells to fight disease.

"Our research shows KAT7 could be targeted to modify the training of immune T cells so they can either be stopped from causing autoimmunity, or boosted to fight disease.

"Potential applications of this knowledge include organ-specific autoimmune diseases such as Type 1 diabetes and multiple sclerosis, as well as cancer immunotherapy. In the latter scenario, the immune system could be supercharged to combat cancer by blocking KAT7 in the thymus," he said.

**More information:** Melanie Heinlein et al, The acetyltransferase KAT7 is required for thymic epithelial cell expansion, expression of AIRE target genes, and thymic tolerance, *Science Immunology* (2022).  
[DOI: 10.1126/sciimmunol.abb6032](https://doi.org/10.1126/sciimmunol.abb6032).  
[www.science.org/doi/10.1126/sciimmunol.abb6032](https://www.science.org/doi/10.1126/sciimmunol.abb6032)

Provided by Walter and Eliza Hall Institute of Medical Research

Citation: 'Boot camp' enzyme prevents autoimmune conditions (2022, January 31) retrieved 10 March 2023 from  
<https://medicalxpress.com/news/2022-01-boot-enzyme-autoimmune-conditions.html>

<p>This document is subject to copyright. Apart from any fair dealing for the purpose of private study or research, no part may be reproduced without the written permission. The content is provided for information purposes only.</p>
------------------------------------------------------------------------------------------------------------------------------------------------------------------------------------------------------------------------------------------