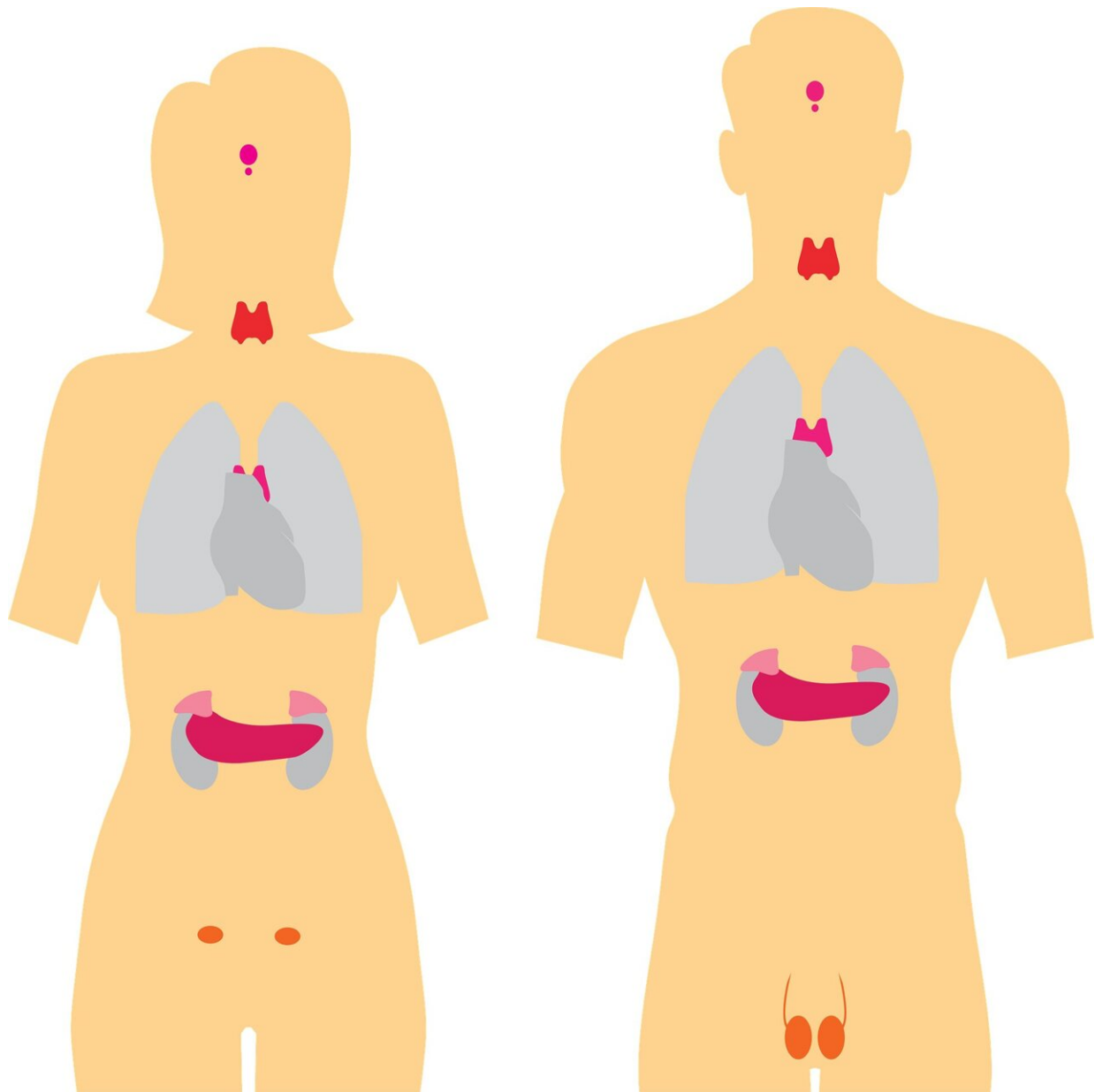


Consumer Health: Understanding thyroid cancer risk

January 26 2022, by Laurel Kelly



Credit: Pixabay/CC0 Public Domain

January is Thyroid Awareness Month, which makes this a good time to learn about thyroid cancer risk factors.

Thyroid cancer occurs in the cells of the thyroid, which is a butterfly-shaped gland at the base of your neck. Your thyroid produces hormones that regulate your heart rate, blood pressure, body temperature and weight.

There may be no signs or symptoms early in the disease. As [thyroid cancer](#) grows, it may cause pain and swollen lymph nodes; difficulty swallowing; and changes to your voice, including increasing hoarseness.

Factors that may increase the risk of thyroid cancer include:

- Being female: Thyroid cancer occurs more often in women than men.
- Exposure to high levels of radiation: Radiation therapy treatments to the head and neck increase the risk of thyroid cancer.
- Certain inherited [genetic syndromes](#): Genetic syndromes that increase the risk of thyroid cancer include familial medullary thyroid cancer, multiple endocrine neoplasia, Cowden syndrome and familial adenomatous polyposis.

Most thyroid cancers can be cured with treatment. Your [treatment options](#) will depend on the type and stage of your thyroid cancer, your overall health, and your preferences. Small thyroid cancers that have a low risk of spreading in the body might not need treatment right away. Instead, you may consider active surveillance with frequent monitoring

of the cancer.

©2022 Mayo Clinic News Network.

Distributed by Tribune Content Agency, LLC.

Citation: Consumer Health: Understanding thyroid cancer risk (2022, January 26) retrieved 17 February 2023 from <https://medicalxpress.com/news/2022-01-consumer-health-thyroid-cancer.html>

This document is subject to copyright. Apart from any fair dealing for the purpose of private study or research, no part may be reproduced without the written permission. The content is provided for information purposes only.