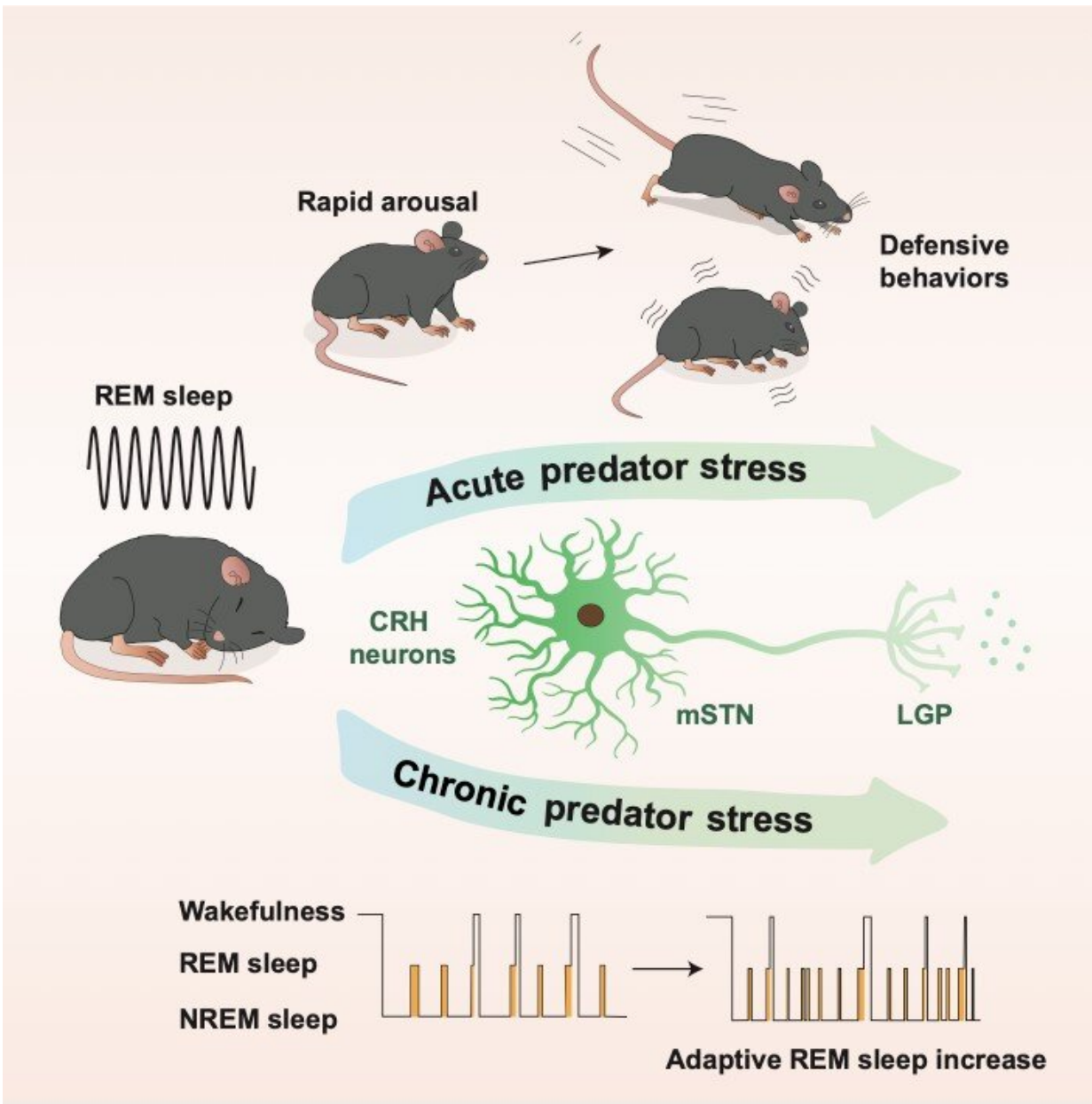


# Rapid eye movement sleep helps protect against predator attack

January 21 2022



The mSTN-CRH-LGP neural circuit regulates REM sleep and defensive behaviors. Credit: SIAT

Rapid eye movement (REM) sleep brings about brief but periodic awakenings. In 1966, Dr. Frederick Snyder reported the "sentinel" function of REM could help animals prepare a fight or flight response against potential predator attacks. However, to date there has been no experimental evidence for this hypothesis.

Now, a research team led by Dr. Wang Liping from the Shenzhen Institute of Advanced Technology (SIAT) of the Chinese Academy of Sciences has reported a common circuit regulating both innate fear and REM [sleep](#), which has proved this hypothesis.

The study was published in *Neuron* on Jan. 21.

In the experiment, the animals slept in a sealed chamber and were exposed to trimethylthiazoline (TMT) odor, a stimulus indicating the presence of a predator.

"TMT triggered rapid arousal from REM sleep but not from non-rapid-eye-movement sleep. This suggests that REM sleep has specific properties that allow rapid arousal in response to predatory stimuli," said Dr. Wang.

As REM sleep is generally characterized by higher arousal thresholds than non-[rapid-eye-movement](#) (NREM) sleep, the research team aimed to uncover the [neural mechanisms](#) underlying this REM-specific function. They examined the medial subthalamic nucleus (mSTN), a brain region that contains a high density of corticotropin-releasing

hormone (CRH) neurons.

By combining in vivo neural activity recording and cell-type specific manipulations, they found that mSTN-CRH neurons produced a lowered arousal threshold during REM sleep for detecting predator threats, as well as increased defensive responses after awakening.

The results also showed that sustained predator exposure induced a significant increase in total REM sleep time but shorter durations of individual REM-sleep episodes and sleep architecture fragmentation. The mSTN-CRH neurons are required for this REM sleep adaptation to chronic threat exposure.

This is an example of how evolution leads to two distinct but related functions for the same set of neurons rather than two completely separate neuronal networks. "We may hypothesize that natural selection favors optimizing existing [neural circuitry](#) for efficiency in [signal transduction](#) and energy usage over metabolically more expensive solutions," said Dr. Wang.

The co-occurrence of increased REM sleep and stress-related mood disorders has been observed in [clinical studies](#). The new findings in this study offer a potential evolutionary explanation of this phenomenon and elucidate the underlying neurobiological mechanism.

"Our study raises the question of whether it is possible to treat mood disorders by targeting the common regulatory circuit of sleep and fear. We will continue working on this question," said Dr. Yu-Ting Tseng, lead author of the study.

**More information:** Liping Wang, The subthalamic corticotropin-releasing hormone neurons mediate adaptive REM sleep responses to threat, *Neuron* (2022). [DOI: 10.1016/j.neuron.2021.12.033](https://doi.org/10.1016/j.neuron.2021.12.033).

[www.cell.com/neuron/fulltext/S0896-6273\(21\)01088-6](http://www.cell.com/neuron/fulltext/S0896-6273(21)01088-6)

Provided by Chinese Academy of Sciences

Citation: Rapid eye movement sleep helps protect against predator attack (2022, January 21)  
retrieved 3 March 2023 from

<https://medicalxpress.com/news/2022-01-rapid-eye-movement-predator.html>

This document is subject to copyright. Apart from any fair dealing for the purpose of private study or research, no part may be reproduced without the written permission. The content is provided for information purposes only.