

Boosting one gene in the brain's helper cells slows Alzheimer's progression in mice

January 11 2022, by Eric Hamilton

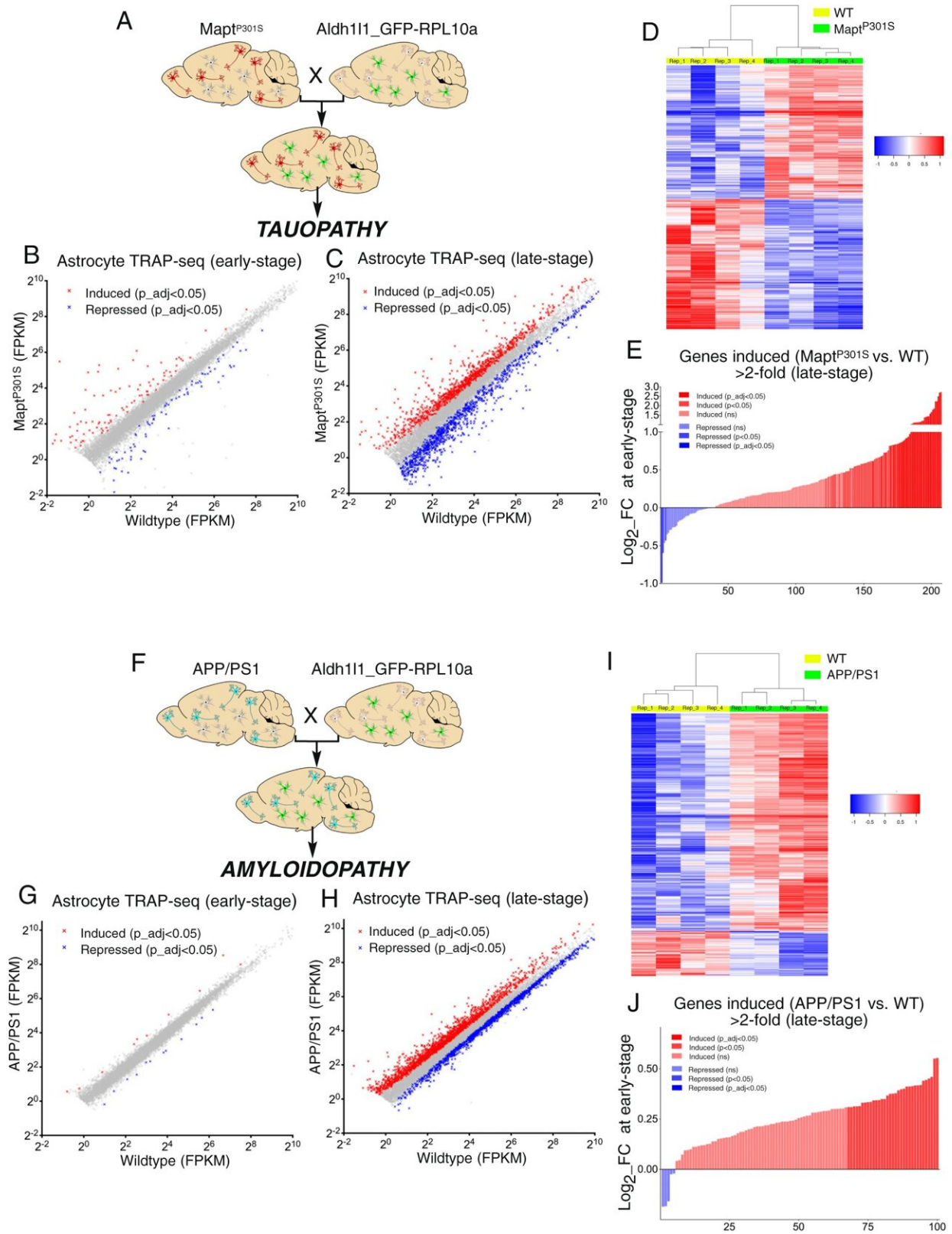


Fig. 1: Changes to the astrocyte transcriptome due to tau and amyloid pathology. A

Schematic illustrating the crossing of MAPT^{P301S} with the Aldh111_eGFP-RPL10a mouse. Astrocyte TRAP-seq performed on MAPT^{P301S} vs. WT mice (both carrying the Aldh111_eGFP-RPL10a allele) at 3 months (B) and 5 months (C) in the spinal cord. Genes significantly induced (red) and repressed (blue) are highlighted (expression cut-off 1FPKM, p values are adjusted for multiple testing by the Benjamini–Hochberg procedure to give a false discovery rate of 5% (p_adj 1.5-fold at 5 months (p_adj 2-fold in MAPT^{P301S} at late stage (C) when examined at the early stage (B). t = 11.28, df = 206, p

Citation: Boosting one gene in the brain's helper cells slows Alzheimer's progression in mice (2022, January 11) retrieved 12 March 2023 from <https://medicalxpress.com/news/2022-01-boosting-gene-brain-helper-cells.html>

This document is subject to copyright. Apart from any fair dealing for the purpose of private study or research, no part may be reproduced without the written permission. The content is provided for information purposes only.