

# Newly discovered proteins protect against progression of diabetic kidney disease

30 June 2021



Credit: Unsplash/CC0 Public Domain

Elevated levels of three specific circulating proteins are associated with protection against kidney failure in diabetes, according to research from the Joslin Diabetes Center that will be published 30th June in *Science Translational Medicine*.

"As well as acting as biomarkers for advancing kidney disease risk in [diabetes](#), the proteins may also serve as the basis for future therapies against progression to the most serious types of kidney disease," said Andrzej S. Krolewski MD, Ph.D., senior author on the publication, senior investigator at Joslin Diabetes Center and professor of medicine at Harvard Medical School. This would likely include the delay and prevention of end stage renal disease (ESRD), which is the most serious and advanced stage of diabetic kidney disease.

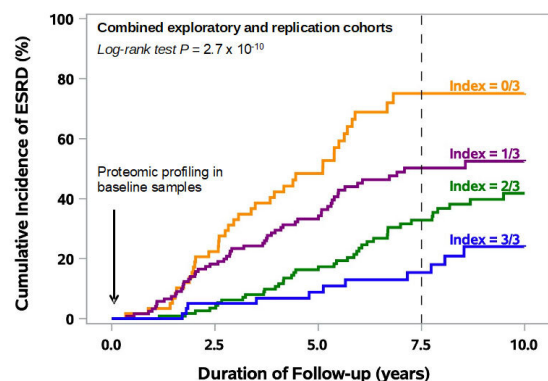
The study marks a move towards looking for markers associated with protection against rather than increased individual risk for the rapid progression of diabetic kidney disease. This should more directly derive potential targets for slowing progression since it is based on the thinking that individuals with slow progression will have

protective factors of some sort.

"Our research became possible only recently," said Dr. Krolewski. "We were able to search for these markers thanks to the development of high-throughput proteomic platforms. More importantly, the availability of biobank specimens that we established many years ago in the Joslin Kidney Study was critical."

According to the report, the researchers profiled levels of just over 1000 proteins in the plasma samples that were taken at baseline in the original study. All of them had diabetes and moderately impaired kidney function. They used two cohorts of individuals with either type 1 or type 2 diabetes that were followed for between 7 and 15 years.

The main aim was to identify proteins that were elevated in individuals with slow or minimal decline in kidney function over the follow-up period. Notably, they did validate the initial findings in a further cohort of individuals with type 1 diabetes.



The cumulative incidence of End Stage Renal Disease (ESRD) according to index of protection of three proteins, Index=0/3 indicates no protection whereas Index=3/3 indicates full protection. Credit: Copyright Joslin Diabetes Center

Working through potential candidate proteins, they found three proteins that appeared to offer protection against progressive decline. These were fibroblast growth factor 20 (FGF20), angiopoietin-1 (ANGPT1) and tumor necrosis factor ligand superfamily member 12 (TNFSF12).

**More information:** Z.I. Md Dom et al., "Circulating proteins protect against renal decline and progression to end-stage renal disease in patients with diabetes," *Science Translational Medicine* (2021). [stm.sciencemag.org/lookup/doi/...scitranslmed.abd2699](https://stm.sciencemag.org/lookup/doi/10.1126/scitranslmed.abd2699)

In each case elevated circulating levels reduced odds of progressive kidney decline and progression towards ESRD. The combined effect of having elevated levels of all three proteins translated to very low risk for ESRD.

Provided by Joslin Diabetes Center

"The protective effects of these proteins seem to be independent, which suggests that there are multiple mechanisms involved. They may be causally related to the disease process or represent as-yet unidentified pathways involved in progressive renal decline," said first author Zaipul Md Dom Ph.D., a research fellow in the Dr. Krolewski's laboratory

The authors go further to look at the current biological knowledge relating to the individual proteins and kidney disease, identifying a number of potential mechanisms that might explain their protective effects. According to Dr. Krolewski, these are potential new routes for research that they will follow.

Dr. Kevin Duffin, co-author on the publication, and [chief operating officer](#) at Eli Lilly, Diabetes and Diabetic Complications, said, "Our study identified specific circulating proteins that were depleted in diabetes patients with [kidney](#) disease who progressed to ESRD. These results suggest a personalized medicine approach might be possible for treating patients with low levels of the protective proteins. We think that administering [protein](#) therapeutic mimetics or treatments that enhance circulating levels of these depleted proteins might be the future."

Dr. Krolewski added, "We have already started to develop protocols on how to measure concentrations of the protective proteins in clinical settings. We hope that these proteins can then be used to identify patients at risk of progression to ESRD, who can then be treated with new therapies."

APA citation: Newly discovered proteins protect against progression of diabetic kidney disease (2021, June 30) retrieved 7 November 2022 from <https://medicalxpress.com/news/2021-06-newly-proteins-diabetic-kidney-disease.html>

*This document is subject to copyright. Apart from any fair dealing for the purpose of private study or research, no part may be reproduced without the written permission. The content is provided for information purposes only.*