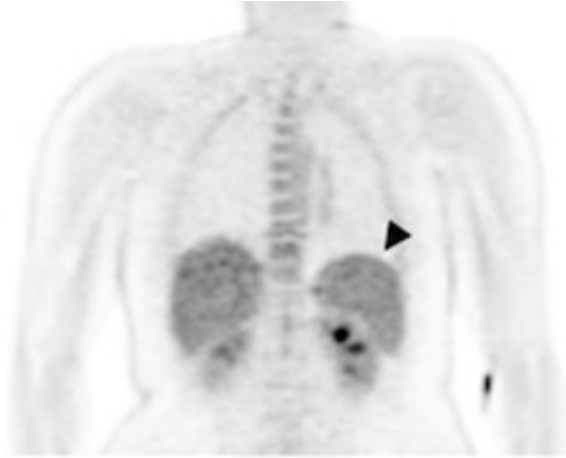


# Malaria parasite's partiality for the spleen

1 June 2021



PET imaging of a participant following experimental *P. vivax* infection. The arrowhead highlights increased glucose uptake in the spleen. Credit: Woodford J, Gillman A, Jenvey P, Roberts J, Woolley S, Barber BE, et al. (2021) Positron emission tomography and magnetic resonance imaging in experimental human malaria to identify organ-specific changes in morphology and glucose metabolism: A prospective cohort study. *PLoS Med* 18(5): e1003567. [10.1371/journal.pmed.1003567](https://doi.org/10.1371/journal.pmed.1003567)

The malaria parasite *Plasmodium vivax* may accumulate in the spleen soon after infection to a greater extent than its better-known relative *P. falciparum*, according to new research published by John Woodford of the University of Queensland, Brisbane, Australia and colleagues in the open access journal *PLOS Medicine*.

Managing and treating *P. vivax* and *P. falciparum* infections calls for investigation of their different pathways of infection, and our limited understanding of disease pathology has generally relied on indirect and imprecise approaches. Woodford and colleagues studied 7 healthy participants who were infected under controlled conditions with either *P. vivax* or *P. falciparum*. They underwent a Positron Emission Tomography (PET) scan and Magnetic Resonance Imaging (MRI) 7 days before infection and again 7 to 11

days afterwards, before receiving antimalarial treatment.

The team investigated participants' spleen, liver and bone marrow for changes in form or structure as well as glucose metabolism, which would suggest accumulation of the parasite in individual organs. In the spleen, [glucose metabolism](#) increased following infection, and this was more pronounced in participants infected with *P. vivax*. Neither the liver nor [bone marrow](#) were affected at this early stage of infection. Despite the small size of the study, the research shows that imaging in this way can help in understanding how [malarial parasites](#) accumulate in specific organs as well as modifying previous thinking about the behavior of *P. vivax* at the "blood stage" of infection.

Dr. Woodford notes, "Malaria parasites outside of the circulation contribute to disease but are very difficult to study. By performing this novel imaging study in participants undergoing experimental malaria infection, we have been able to look at what is happening inside specific organs during the earliest stages of blood stage infection. This represents further evidence that parasites of the important species *Plasmodium vivax* have a particular predilection for the spleen, and highlights how controlled infection studies can accommodate unique exploratory objectives that cannot be otherwise studied in humans."

**More information:** John Woodford et al, Positron emission tomography and magnetic resonance imaging in experimental human malaria to identify organ-specific changes in morphology and glucose metabolism: A prospective cohort study, *PLOS Medicine* (2021). [DOI: 10.1371/journal.pmed.1003567](https://doi.org/10.1371/journal.pmed.1003567)

Provided by Public Library of Science

APA citation: Malaria parasite's partiality for the spleen (2021, June 1) retrieved 7 June 2022 from <https://medicalxpress.com/news/2021-06-malaria-parasite-partiality-spleen.html>

*This document is subject to copyright. Apart from any fair dealing for the purpose of private study or research, no part may be reproduced without the written permission. The content is provided for information purposes only.*