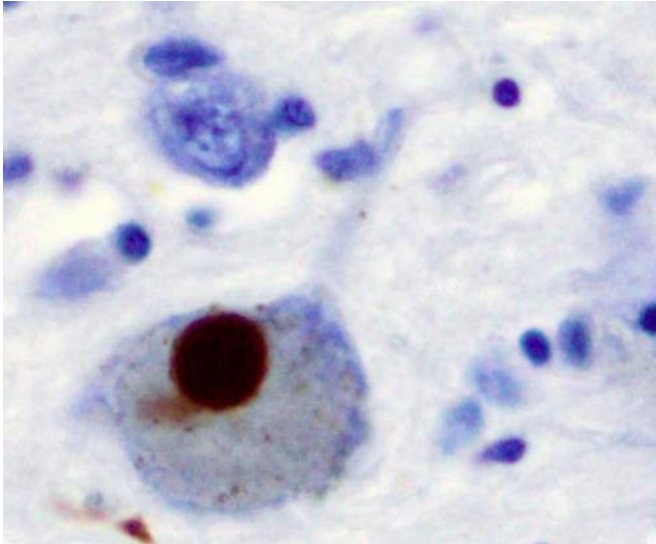


# Low blood flow in the brain may be an early sign of Parkinson's disease

25 May 2021



Immunohistochemistry for alpha-synuclein showing positive staining (brown) of an intraneuronal Lewy-body in the Substantia nigra in Parkinson's disease. Credit: Wikipedia

Patients who suffer from REM sleep behavior disorder have altered blood flow in the brain, which can lead to a lack of oxygen in the brain tissue. In the long term, this may cause symptoms of Parkinson's disease. This is shown by research from Aarhus University and Aarhus University Hospital.

Do you sleep restlessly and flail your arms and kick out in your sleep? This could be a sign of a disorder associated with diseases of the brain. Researchers from AU and AUH have examined whether the sleep disorder RBD—which is also known as Rapid Eye Movement Sleep Behavior Disorder—may be an early sign of Parkinson's disease.

"We can see complications in the small [blood vessels](#) of the brain in [patients](#) with RBD, although

these patients don't otherwise have any symptoms and the brain doesn't show other signs of disease," says Simon Fristed Eskildsen, who is behind the study.

He explains, "We believe that the same disease processes that cause disrupted sleep also affect the ability to control the [blood flow](#) in the brain, which can lead to a lack of oxygen in the brain tissue. Over time this will gradually break down the [brain tissue](#) and cause symptoms that we see in Parkinson's disease."

## Monitored while asleep

The changes in the brain are associated with reduced neurotransmitters, meaning that nerves in the brain have trouble controlling the blood vessels.

"A [medical treatment](#) would be able to restore the neurotransmitter and control of the blood vessels, thereby helping to maintain the cognitive function of patients who show early signs of Parkinson's disease," explains the researcher.

Twenty RBD patients aged 54-77 years and 25 healthy control subjects aged 58-76 participated in the study. The participants in the study were monitored in a sleep laboratory, where they had their EEG ([electrical activity](#) in the brain), EOG (eye movements), EMG (muscle activity) and ECG (electrical activity in the heart) measured during sleep.

"The patients and the control subjects were tested cognitively and MRI scanned, and the results revealed low blood flow and flow disturbances in the small blood vessels in the brain in the patients compared with the control group. In the patients, these flow disturbances seen in the cerebral cortex were associated with language comprehension, visual construction and recognition—this was also associated with reduced cognitive performance," says last author of the study, Nicola Pavese.

The researchers will now investigate whether the reduced [blood](#) flow in the brain deteriorates over time and how it is linked to the symptoms of Parkinson's disease. The hope is that it will be possible to use the method to predict the disease in patients with sleep disorders in order to then prevent the symptoms at an early stage.

The results have just been published in the scientific journal *Brain*.

### **Parkinson's disease**

There are 7300 patients with Parkinson's disease in Denmark. Symptoms are slow movements, often with shaking, together with muscular rigidity. Parkinson's disease is a chronic condition that continues to worsen over time. About half of the patients experience cognitive decline early in the disease. The disease is somewhat more common in men than in women. Parkinson's [disease](#) occurs because the [brain](#) lacks dopamine. It primarily affects adults and the first signs most often appear between the ages of 50-70.

**More information:** Simon F Eskildsen et al, Impaired cerebral microcirculation in isolated REM sleep behaviour disorder, *Brain* (2021). [DOI: 10.1093/brain/awab054](#)

Provided by Aarhus University

APA citation: Low blood flow in the brain may be an early sign of Parkinson's disease (2021, May 25) retrieved 3 June 2022 from <https://medicalxpress.com/news/2021-05-blood-brain-early-parkinson-disease.html>

*This document is subject to copyright. Apart from any fair dealing for the purpose of private study or research, no part may be reproduced without the written permission. The content is provided for information purposes only.*