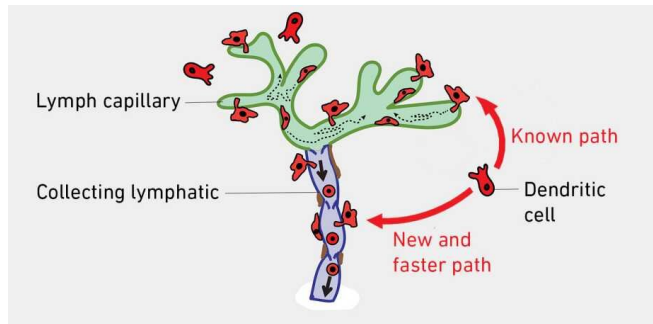


# Research uncovers shortcut dendritic cells take to lymph nodes

17 May 2021, by Fabio Bergamin



Dendritic cells are specialized white blood cells present in body tissue that engulf pathogens and transport them to lymph nodes. (Visualization: Science Photo Library)  
Source: Arasa et al. Journal of Experimental Medicine 2021, modified

In its response to pathogens and vaccines, the immune system relies on dendritic cells, white blood cells that patrol the body's tissues, collect components of pathogens and vaccines and transport them via lymphatic vessels to the nearest lymph node. There, they present the collected material to other immune cells in order to trigger an immune response.

How, exactly, dendritic [cells](#) get from the tissue into [lymphatic vessels](#) and from there to the lymph node is the focus of research conducted by Cornelia Halin, professor of pharmaceutical immunology at ETH Zurich. For a long time, scientists assumed that dendritic cells choose the path of least resistance and migrate from the tissue into the smallest branches of the lymphatic vessels, the lymphatic capillaries. This is because, unlike other lymphatic vessels, capillaries are surrounded only by a thin, barely closed layer of cells, allowing dendritic cells to slip through the spaces between neighboring cells relatively easily.

However, this route is slow. While cells in [blood](#)

[vessels](#) and in most other lymphatic vessels are carried along by a flow of fluid, virtually no flow is present in lymphatic capillaries. Consequently, cells in these capillary vessels actively move themselves forward, which only happens at an extremely low speed.

With her team, ETH Professor Halin has now discovered that dendritic cells can take a shortcut. In microscopy studies performed on mouse tissues, the scientists were able to show that dendritic cells can also migrate directly into the collecting lymphatics, the lymphatic vessels into which the capillaries merge. These vessels are surrounded by a well-sealed layer of cells and a thicker membrane of connective tissue. Consequently, migration across these barriers is more difficult for dendritic cells, and entry takes longer than into capillaries. All in all, however, dendritic cells taking this path arrive in the [lymph nodes](#) much faster, since immediately after entry, they are carried along by the lymph flow present in the collecting vessels and can bypass the slow, active migration step in the capillaries.

## Thinner barrier in case of inflammation

At present, it is not yet completely understood under which circumstances dendritic cells choose the known path via the capillaries and under which they take the newly discovered shortcut. Professor Halin and her colleagues have shown that the shortcut becomes available when there is an ongoing inflammatory response in the tissue. Specifically, the researchers were able to show that the connective tissue membrane surrounding the collecting lymphatics becomes degraded during inflammation, making it easier for dendritic cells to penetrate into the collectors.

It thus appears that an inflammatory response is the key factor that allows dendritic cells to take this shortcut and arrive more quickly in the lymph nodes. The scientists will now investigate whether

all [dendritic cells](#) or only specific subtypes can travel via this route. In particular, they plan to explore the importance of the newly discovered pathway for the activation of the [immune system](#) and for installing immune responses. They suspect that the ability to sound the alarm in the lymph node more quickly may provide an advantage in fighting certain infections.

**More information:** Jorge Arasa et al, Upregulation of VCAM-1 in lymphatic collectors supports dendritic cell entry and rapid migration to lymph nodes in inflammation, *Journal of Experimental Medicine* (2021). [DOI: 10.1084/jem.20201413](#)

Provided by ETH Zurich

APA citation: Research uncovers shortcut dendritic cells take to lymph nodes (2021, May 17) retrieved 27 May 2021 from <https://medicalxpress.com/news/2021-05-uncovers-shortcut-dendritic-cells-lymph.html>

*This document is subject to copyright. Apart from any fair dealing for the purpose of private study or research, no part may be reproduced without the written permission. The content is provided for information purposes only.*