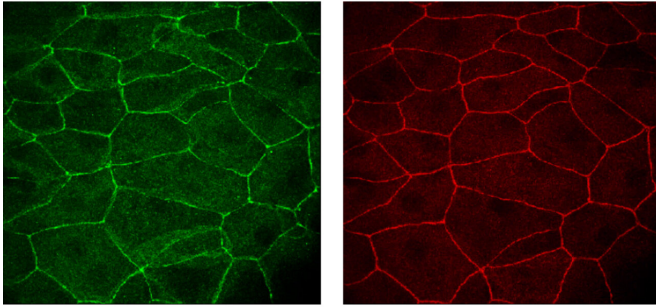


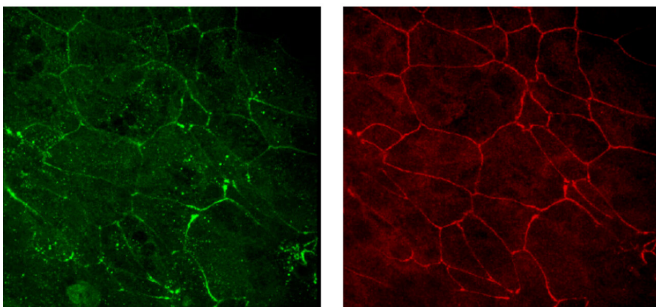
Defective epithelial barriers linked to 2 billion chronic diseases

6 May 2021

healthy



asthmatic



and external surfaces of the human body. This protective layer acts as a defense against invaders—including bacteria, viruses, environmental toxins, pollutants and allergens. If the skin and mucosal barriers are damaged or leaky, foreign agents such as bacteria can enter into the tissue and cause local, often [chronic inflammation](#). This has both direct and indirect consequences.

Chronic diseases due to defective epithelial barriers

Cezmi Akdis, Director of the Swiss Institute of Allergy and Asthma Research (SIAF), which is associated with the University of Zurich (UZH), has now published a comprehensive summary of the research on epithelial barrier damage in *Nature Reviews Immunology*. "The epithelial barrier hypothesis proposes that damages to the epithelial barrier are responsible for up to two billion chronic, non-[infectious diseases](#)," Professor Akdis says. In the past 20 years, researchers at the SIAF alone published more than 60 articles on how various substances damage the [epithelial cells](#) of a number of organs.

Straight and clear epithelial barrier of healthy bronchial epithelial cells (at the top) and leaky and damaged asthmatic epithelial cells (at the bottom). Credit: Cezmi Akdis

Humans are exposed to a variety of toxins and chemicals every day. According to the epithelial barrier hypothesis, exposure to many of these substances damages the epithelium, the thin layer of cells that covers the surface of our skin, lungs and intestine. Defective epithelial barriers have been linked to a rise in almost two billion allergic, autoimmune, neurodegenerative and psychiatric diseases.

Epithelial cells form the covering of most internal

Rise in allergic and autoimmune conditions

The epithelial barrier hypothesis provides an explanation as to why allergies and autoimmune diseases have been increasing for decades—they are linked to industrialization, urbanization and westernized lifestyle. Today many people are exposed to a wide range of toxins, such as ozone, nanoparticles, microplastics, household cleaning agents, pesticides, enzymes, emulsifiers, fine dust, exhaust fumes, cigarette smoke and countless chemicals in the air, food and water. "Next to [global warming](#) and viral pandemics such as COVID-19, these harmful substances represent one of the [greatest threats](#) to humankind," emphasizes Akdis.

Asthma, Alzheimer's etc.

Local epithelial damage to the skin and mucosal barriers lead to allergic conditions, inflammatory bowel disorders and celiac disease. But disruptions to the epithelial barrier can also be linked to many other diseases that are characterized by changes in the microbiome. Either the [immune system](#) erroneously attacks "good" bacteria in healthy bodies or it targets pathogenic—i.e. "bad"—invaders. In the gut, leaky epithelial barriers and microbial imbalance contribute to the onset or development of chronic autoimmune and metabolic diseases such as diabetes, obesity, rheumatoid arthritis, multiple sclerosis or ankylosing spondylitis. Moreover, defective epithelial barriers have also been linked to neurodegenerative and psychiatric diseases such as Parkinson's disease, Alzheimer's disease, autism spectrum disorders and chronic depression, which may be triggered or aggravated by distant inflammatory responses and changes in the gut's microbiome.

Prevention, intervention—and more research

"There is a great need to continue research into the epithelial [barrier](#) to advance our understanding of molecular mechanisms and develop new approaches for prevention, early intervention and therapy," says Akdis. Novel therapeutic approaches could focus on strengthening tissue-specific barriers, blocking bacteria or avoiding colonization by pathogens. Other strategies to reduce diseases may involve the microbiome, for example through targeted dietary measures. Last but not least, the focus must also be on avoiding and reducing exposure to [harmful substances](#) and developing fewer toxic products.

More information: Cezmi A. Akdis. Does the epithelial barrier hypothesis explain the increase in allergy, autoimmunity and other chronic conditions?, *Nature Reviews Immunology* (2021). [DOI: 10.1038/s41577-021-00538-7](https://doi.org/10.1038/s41577-021-00538-7)

Provided by University of Zurich

APA citation: Defective epithelial barriers linked to 2 billion chronic diseases (2021, May 6) retrieved 30 September 2022 from <https://medicalxpress.com/news/2021-05-defective-epithelial-barriers-linked-billion.html>

This document is subject to copyright. Apart from any fair dealing for the purpose of private study or research, no part may be reproduced without the written permission. The content is provided for information purposes only.