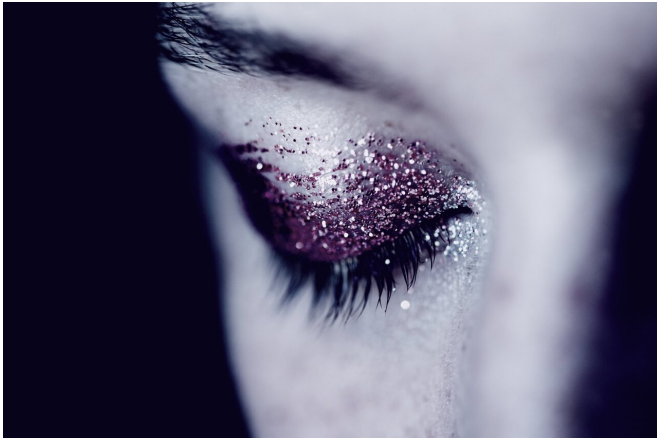


Partners of people with schizophrenia and bipolar disorder often have a mental disorder

4 May 2021



Credit: Unsplash/CC0 Public Domain

Almost half of the parents who have children together with a parent with schizophrenia or bipolar disorder, are themselves burdened by psychological issues. This can affect family life and the children. This is shown in the research results from the major Danish psychiatry project iPSYCH.

We typically choose a partner who resembles us in relation to social status, education and, to some extent, also income. Research has previously established this. A new study now shows that almost half of the [parents](#) who have [children](#) with a partner who suffers from schizophrenia or bipolar disorder themselves meet the criteria for a [mental disorder](#). By comparison, this is 18 percent for parents in the control group.

The results stem from The Danish High-Risk and Resilience Study, which is part of iPSYCH. A total of 872 parents participated in the study. The parental couples were selected such that one of the parents was registered in the National Patient

Register with a diagnosis of schizophrenia or bipolar disorder. Their partner and the parents from the control group were not registered with these disorders. At the time of the study, all of the parents had a seven-year-old child.

Met the criteria themselves

"In the Danish registers we used, each child only had one parent registered with a mental disorder, but the diagnostic interview carried out as part of our study showed that almost half of the partners also fulfilled the criteria for such a disorder. In addition, the partners had a lower functional level compared to the control group," says Ph.D. and Psychologist Aja Neergaard Greve, who is behind the study.

"The most frequent diagnosis among the partners was depression. We were surprised that six per cent of the partners to people with schizophrenia also met the diagnostic criteria for schizophrenia themselves. In the control group, it was only one per cent," she says.

Care is often dependent on the other person

According to the researcher, the results—which have been published in the scientific journal *Schizophrenia Bulletin* - indicate possible risk factors for children who grow up in families with a parent with schizophrenia or bipolar disorder.

"When one of the parents has a severe mental disorder, caring for the child will often be more dependent on the other parent, who perhaps also has much of their attention directed towards the ill parent. If the parent who we thought was healthy and well-functioning also in some cases has a mental disorder, and/or has a lower functional level and is emotionally and practically burdened by the

general family situation, then this can have significance for the whole [family's](#) well-being," explains Aja Neergaard Greve.

Nationwide Cohort Study of Nonrandom Mating in Schizophrenia and Bipolar Disorder, *Schizophrenia Bulletin* (2021). [DOI: 10.1093/schbul/sbab021](https://doi.org/10.1093/schbul/sbab021)

Already at increased risk

Children born to parents with schizophrenia and bipolar disorder have an [increased risk](#) of themselves developing mental disorders—in fact, the familial risk is the highest known risk factor for later development of these [disorders](#). If both parents have a mental disorder, the overall risk for the children increases.

Provided by Aarhus University

"This increased risk is both genetic and environmental. Cognitive functions such as intelligence are e.g. hereditary, but if the parents have cognitive difficulties there will also be an effect on the environment the child grows up in if the parents therefore don't have the opportunity to create good stable routines and predictability or to stimulate the child sufficiently," she says and continues:

"Some of these families are particularly vulnerable and struggle with more than one issue and they therefore need extra help and support. Our study suggests that there is a need for increased attention on some of the families where one or both parents have a mental disorder. There is a need for specialized and targeted efforts for families already early in the child's life," says Aja Neergaard Greve.

The researchers will follow the families from the study up through the child's upbringing and hope to learn more about how the children develop, as well as which factors have greatest importance for the well-being of the families.

Background for the results

The Danish High-Risk and Resilience Study is a nationwide, representative group consisting of 522 children born to parents with [schizophrenia](#), [bipolar disorder](#) or parents from the [control group](#). The children and both the child's biological parents have been interviewed and examined. The results of this study stem from data from 872 parents.

More information: Aja Neergaard Greve et al. A

APA citation: Partners of people with schizophrenia and bipolar disorder often have a mental disorder (2021, May 4) retrieved 17 June 2021 from <https://medicalxpress.com/news/2021-05-partners-people-schizophrenia-bipolar-disorder.html>

This document is subject to copyright. Apart from any fair dealing for the purpose of private study or research, no part may be reproduced without the written permission. The content is provided for information purposes only.