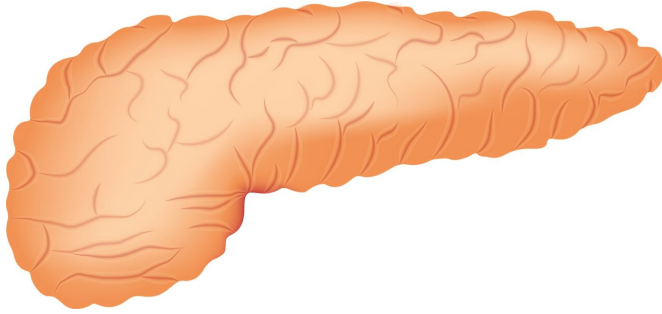


Scientists create first-of-its-kind 3D organoid model of the human pancreas

28 April 2021



Credit: CC0 Public Domain

This year, more than 60,000 adults in the United States will be diagnosed with pancreatic cancer and, statistically, as few as 10 percent will survive five years after diagnosis, according to the American Cancer Society. Because pancreatic cancer is hidden deep within the body and often symptomless, it's frequently diagnosed after the disease has progressed too far for surgical intervention and/or has spread throughout the body. Research indicates that earlier detection of pancreatic tumors could quadruple survival rates; however, no validated and reliable tests for early detection of pancreatic cancer currently exist.

Now, researchers at the Cancer Research Institute at Beth Israel Deaconess Medical Center (BIDMC) have successfully created the first three-dimensional (3D) organoid models of the pancreas from [human stem cells](#). Unlike previous platforms for the study of [pancreatic cancer](#), this first-of-its-kind organoid model includes both the acinar and ductal structures that play a critical role in the majority of pancreatic cancers. The new research platform—which is not expected to guide [patient care](#) at this time—will shed new light on the origins and development of pancreatic cancer, as well as reveal potential means for discovering markers of early diagnosis and monitoring the disease. The

team's report appears in *Cell Stem Cell*.

"We thought, if we had a way to use human pancreatic [cells](#) to forward engineer cancer, we could begin to understand the earliest steps in the development of this disease," said corresponding author Senthil Muthuswamy, Ph.D., Director of Cell Biology at the Cancer Research Institute at BIDMC. "This model could also serve as a platform to potentially discover biomarkers—measurable changes linked to disease—that we hope to use in the clinic to monitor cancer development."

The pancreas is a hormone-secreting organ consisting of ducts and acinar cell structures. Researchers suspect that the most common kind of pancreatic cancer (pancreatic ductal adenocarcinoma, or PDAC) arises in the cells lining acinar and ductal structures. However, until now, scientists have not been able to successfully grow and maintain human acinar structures in the lab challenging their ability to test the hypothesis in a model.

To coerce the stem cells down the path to becoming ductal and acinar cells, Ling Huang, Instructor of Medicine at BIDMC in the Muthuswamy laboratory collaborated with Doug Melton's laboratory at Harvard University and methodically tested various combinations of cell growth media used for different lengths of time. The culmination of five-plus years' of work, presented in the study represents the first time researchers successfully generated human acinar cells in culture and maintained them long enough to be able to use them in experiments.

"It's like a cooking recipe—a complex recipe, with no precedent," said Muthuswamy, who is also Associate Professor of Medicine, Harvard Medical School. "Only when you use all the right ingredients in the right proportions and do them in the correct sequence do you get the cells becoming the acinar cells."

Next, Huang and Ridhdi Desai, a Research Fellow at BIDMC, used the two separate lineages of ductal and acinar organoids, engineered to include gene mutations known to be associated with pancreatic cancer. When the organoids were later implanted into mice, the different lineages behaved in distinct, predictable ways. For example, one mutation caused seven out of 10 of the mice transplanted with acinar-like organoids to develop cellular changes analogous to early pancreatic cancer in humans.

"Understanding the mechanisms that regulate these events will provide important insights into the events regulating the initiation of pancreatic cancer," said Muthuswamy, who stressed that direct use of this acinar organoid technology for patients who have cancer today may be limited. "The idea is to see if we can identify biomarkers to benefit future patients—including by screening those at high risk for [pancreatic cancer](#), so we can catch it before it's too late."

More information: Ling Huang et al. Commitment and oncogene-induced plasticity of human stem cell-derived pancreatic acinar and ductal organoids. *Cell Stem Cell*. April 28, 2021
DOI:doi.org/10.1016/j.stem.2021.03.022

Provided by Beth Israel Deaconess Medical Center

APA citation: Scientists create first-of-its-kind 3D organoid model of the human pancreas (2021, April 28) retrieved 4 July 2022 from <https://medicalxpress.com/news/2021-04-scientists-first-of-its-kind-3d-organoid-human.html>

This document is subject to copyright. Apart from any fair dealing for the purpose of private study or research, no part may be reproduced without the written permission. The content is provided for information purposes only.