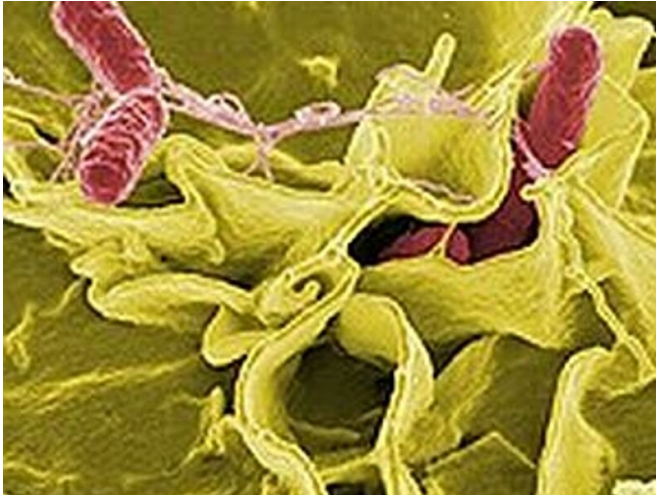


# CDC: Salmonella outbreak linked to Jule's cashew brie?

26 April 2021

Copyright © 2021 [HealthDay](#). All rights reserved.



A *Salmonella* outbreak that has sickened five people in three states appears to be linked to Jule's cashew brie, the U.S. Centers for Disease Control and Prevention says.

Two people were hospitalized, but no deaths have been reported, according to the agency.

On April 22, Jule's Foods recalled: Jule's cashew brie (classic), Jule's truffle cashew brie, Jule's black garlic cashew brie, Jule's artichoke spinach dip, and Jule's vegan ranch dressing.

The products were sold online nationwide as well as in stores in many states. Do not eat, sell, or serve any of the recalled products. Throw them away or return them to the place of purchase, the CDC advised. Use hot soapy water or a dishwasher to clean items and surfaces that may have been in contact with the [recalled products](#).

**More information:** [More Information](#)

APA citation: CDC: Salmonella outbreak linked to Jule's cashew brie? (2021, April 26) retrieved 9 May 2021 from <https://medicalxpress.com/news/2021-04-cdc-salmonella-outbreak-linked-jule.html>

*This document is subject to copyright. Apart from any fair dealing for the purpose of private study or research, no part may be reproduced without the written permission. The content is provided for information purposes only.*