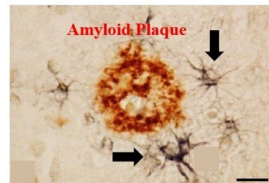
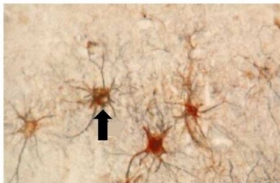


Possible new PET tracer for early detection of Alzheimer's

22 April 2021



Astrocytes in the brain of a deceased patient with Alzheimer's disease. (Right) The black arrows show astrocytes surrounding amyloid plaques in the brain of a deceased patient with Alzheimer's disease. Credit: Amit Kumar.

New biomarkers for Alzheimer's disease are a priority area for researchers seeking to learn more about the disease and find possible methods of early diagnosis. Researchers at Karolinska Institutet in Sweden have now studied a new PET tracer that is an important diagnostic tool for the disease. The study on the tracer substance BU99008, which is published in *Molecular Psychiatry*, can play a key part in the early identification of signs of Alzheimer's disease.

Alzheimer's disease is the most common form of dementia, affecting almost 47 million people around the world, according to Alzheimer's Disease International (ADI)—a figure that is expected to rise with increasing life expectancies.

The disease is as yet incurable, and causes considerable suffering for both patients and their families.

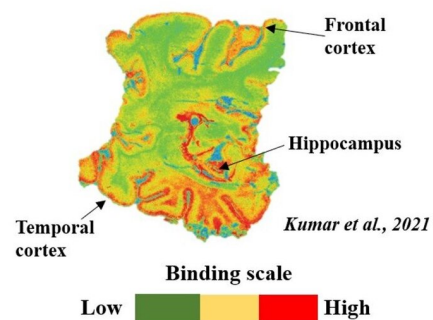
Alzheimer's is an insidious disease, with the changes in [brain function](#) onsetting 10 to 20 years

before the clinically cognitive decline. It is therefore important to identify early disease markers.

One such marker is reactive astrogliosis, which provide early and rapid response to the progression of the disease. Astrocytes are the most important homeostatic cells in the central nervous system (CNS), with a broad spectrum of functions for optimal cerebral function and cellular energy supply, homeostasis.

They are also involved in disease and CNS damage through the defensive process called reactive astrogliosis.

The pathological role played by astrocytes in Alzheimer's disease is not fully understood, but several studies suggest that reactive astrogliosis may precede known early pathological signs of Alzheimer's disease, including amyloid plaque and tau tangles.



The binding of the PET-tracer BU99008 shows reactive astrogliosis in different parts of the brain of a deceased patient with Alzheimer's disease. The colours show the extent of the binding, where green is low, yellow is medium, and red is high binding. Credit: Amit Kumar

Researchers therefore need to develop tracers for

astrocyte response for use in PET scans. PET imaging diagnostic technique is using selective and specific tracers—radioactive chemical molecules—for the early detection of pathological conditions and is already in routine in the detection of abnormal neuronal function and amyloid load in the brain, such as that caused by Alzheimer's disease.

Researchers at Karolinska Institutet, Uppsala University and Indiana University School of Medicine in the U.S. have studied a new astrocytic PET tracer, BU99008, which seems to be promising for Alzheimer's disease.

The researchers used brain tissue from six individuals who had died with Alzheimer's disease and seven healthy controls, who had died of other causes. The results provide a better understanding for BU99008-binding properties compared with other existing astrocytic Alzheimer's disease biomarkers in the brain.

"Our study shows that BU99008 can detect important reactive astrocytes with good selectivity and specificity, making it a potentially important clinical astrocytic PET tracer," says the paper's first author Amit Kumar, researcher at the Department of Neurobiology, Care Sciences and Society, Karolinska Institutet. "The results can improve our knowledge of the role played by reactive astrogliosis in Alzheimer's disease."

"As far as we can judge, this is the first time that BU99008 could visualize reactive astrogliosis in Alzheimer's disease brain," says principal investigator Agneta Nordberg, professor at the same department. "The results can have broad clinical implications that cover other disorders of reactive astroglial dysfunction."

More information: Amit Kumar et al. Astroglial tracer BU99008 visualizes astrogliosis and detects multiple binding sites in Alzheimer's disease brain, *Molecular Psychiatry* (2021). [DOI: 10.1038/s41380-021-01101-5](https://doi.org/10.1038/s41380-021-01101-5)

Provided by Karolinska Institutet

APA citation: Possible new PET tracer for early detection of Alzheimer's (2021, April 22) retrieved 3 July

2022 from <https://medicalxpress.com/news/2021-04-pet-tracer-early-alzheimer.html>

This document is subject to copyright. Apart from any fair dealing for the purpose of private study or research, no part may be reproduced without the written permission. The content is provided for information purposes only.