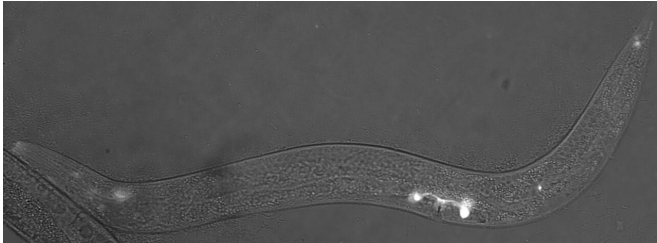


# New mechanism identified behind blindness in older adults

12 April 2021



Glowing sensory cells in the worm *C. elegans* that make complement factor H protein. Credit: PNAS

Using laboratory-grown roundworms as well as human and mouse eye tissue, University of Maryland School of Medicine (UMSOM) researchers have identified a new potential mechanism for age-related macular degeneration—the leading cause of blindness among older adults. The UMSOM researchers say that the findings suggest a new and distinct cause that is different from the previous model of a problematic immune system, showing that the structural organization of the eye's light-detecting cells may be affected by the disease.

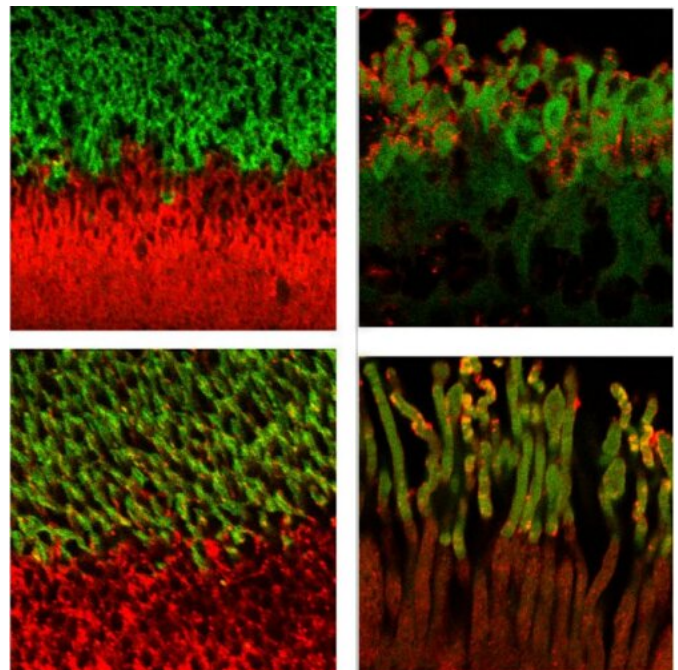
The discovery offers the potential to identify new molecular targets to treat the disease. Their discovery was published on April 12 in the *Proceedings of the National Academy of Sciences* (PNAS).

According to the National Eye Institute, more than 14 percent of Americans over the age of 80 have [age-related macular degeneration](#)—a condition that leads to the progressive loss of vision with no known cure. Treatment exists for the "wet" version of the disease affecting only 10% of those with the condition, meaning most have no options.

"In order to find a cure for a disease, you have to fully understand what causes it, and we identified

potential new contributors that were not known before," says Bruce Vogel, Ph.D., Assistant Professor of Physiology and Scientist at the UMSOM's Center for Biomedical Engineering and Technology (BioMET).

Several years ago, researchers had identified [genetic mutations](#) in the protein complement factor H as a contributor in large number of macular degeneration cases. Complement factor H marks cells in the body as self and protects them from attack by the immune system, whose job it is to eliminate invading pathogens and cells that do not belong. As a result, due to complement factor H's role in this process, it was thought that macular degeneration was likely due to the immune system attacking its own body's cells that were not marked properly as "self."



In healthy light-detecting cells (top), the photoreceptor rhodopsin (green) and inversin (red) proteins are contained in separate portions of the cell's antenna-like structures. However, in the light-detecting mouse cells

missing complement factor H (bottom left) or with human cells with a high-risk age-related macular degeneration mutation (bottom right), the rhodopsin and inversin proteins overlap (yellow). Credit: PNAS

According to Dr. Vogel, since identifying effective new therapies for the disease has been slow, he wanted to see if his team could find new insights from studying the disease components in his laboratory model of the roundworm, *C. elegans*.

Dr. Vogel's team found a worm version of complement factor H protein located in the [sensory neurons](#) that help the worms detect chemicals, food, touch, and temperature. The protein appeared specifically in the middle region of the sensory neuron's little antennas, known as cilia (that do the work of sensing the environment), just next to another known important antenna protein called inversin. However, in worms bred to lack complement factor H, they found the inversin spread throughout the antennas rather than remaining in the middle of the antennas.

Next, the researchers confirmed their results in the light-detecting cells in tissue from human retinas. Complement factor H and inversin had the same positioning next to each other in the antenna of light-detecting cells from healthy samples. Yet in people with complement factor H mutations (i.e. people genetically predisposed to macular degeneration), they found the inversin spread around, no longer restricted to its neat banding pattern on the antenna.

"Our findings suggest that complement factor H plays a role in maintaining the organization of photoreceptor cilia and this process may be defective in age-related [macular degeneration](#)," says Vogel. "We plan to continue this work to determine how this structural disruption affects vision and to determine whether we can reverse the disruption and restore photoreceptor function."

"Age-related blindness is a vastly untreated condition that will only become more common as our population continues to age," says Albert Reece, MD, Ph.D., MBA, Executive Vice President

for Medical Affairs, University of Maryland Baltimore, and the John Z. and Akiko K. Bowers Distinguished Professor and Dean, University of Maryland School of Medicine. "Studies like these are key to laying the groundwork needed to eventually develop treatments in order to treat blindness keeping older adults living independently and maintaining their quality of life."

**More information:** Natalie Acker et al., "A complement factor H homolog, heparan sulfate 3-O sulfotransferase, and syndecan/SDN-1 maintain inversin/NPHP-2 compartment boundaries in *C. elegans* mechanosensory neuron cilia," *PNAS* (2021).

[www.pnas.org/cgi/doi/10.1073/pnas.2016698118](http://www.pnas.org/cgi/doi/10.1073/pnas.2016698118)

Provided by Johns Hopkins University School of Medicine

APA citation: New mechanism identified behind blindness in older adults (2021, April 12) retrieved 4 May 2021 from <https://medicalxpress.com/news/2021-04-mechanism-older-adults.html>

*This document is subject to copyright. Apart from any fair dealing for the purpose of private study or research, no part may be reproduced without the written permission. The content is provided for information purposes only.*