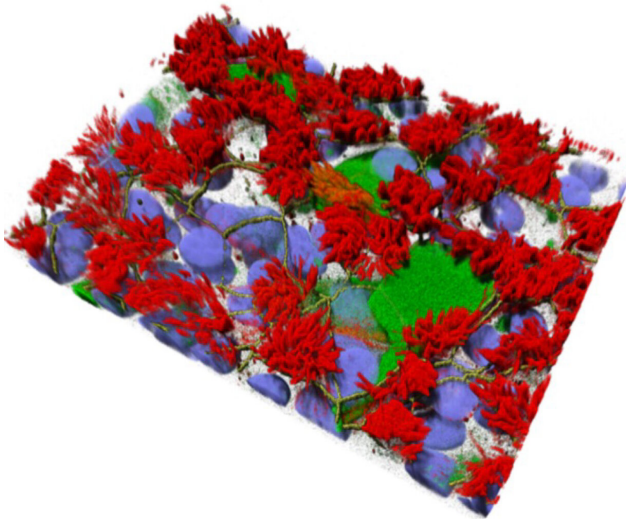


Why SARS-CoV-2 replicates better in the upper respiratory tract

31 March 2021



A 3D representation of human airway cell cultures that mimic the complexity of the cells found in the respiratory tract, including the presence of ciliated cells (red) and different cell layers (cell nucleus, blue), which can be used to study human respiratory virus (green) infections. Credit: © Ronald Dijkman

A team of researchers from the Institute for Infectious Diseases (IFIK) at the University of Bern and the Federal Institute of Virology and Immunology (IVI) have assessed virus growth and activation of the cellular defense mechanisms in the respiratory tract. They have shown that natural temperature differences that exist in the upper and lower respiratory tract have a profound influence on SARS-CoV-2 replication and subsequent innate immune activation in human cells. The findings can help to develop antiviral drugs and preventive measures.

"SARS-CoV-2 and SARS-CoV are highly similar genetically, generate a homologous repertoire of viral proteins, and use the same receptor to infect [human cells](#). However, despite these similarities,

there are also important differences between the two viruses," says Ronald Dijkman from the Institute for Infectious Diseases (IFIK) at the University of Bern. For example, SARS-CoV [infection](#) is characterized by severe disease and inflammation in the lower respiratory tract and infected individuals are only contagious after the onset of symptoms, making it easier to identify and interrupt infection chains.

In contrast, SARS-CoV-2 preferentially replicates in the upper airways (nasal cavity, pharynx, trachea) and can be efficiently transmitted from one individual to another before the appearance of disease symptoms. Moreover, the outcome of SARS-CoV-2 infection varies widely from person to person, and can manifest as asymptomatic, mild, or severe disease. Older people as well as individuals with certain underlying [medical conditions](#) (heart conditions, diabetes, cancer) are at greater risk of developing severe illness, which is often associated with infection of lower respiratory tissues, high levels of inflammation, and lung failure.

Temperature is key

To better understand why infections with SARS-CoV and SARS-CoV-2 result in such different clinical outcomes, researchers from the University of Bern used specialized human airway cell cultures to investigate the impact of respiratory tract temperatures on SARS-CoV and SARS-CoV-2 replication. The [cells](#) originate from human samples and mimic the complexity of the cells found in the respiratory tract. They grow in special containers, are nourished from the bottom side and are exposed to air on the top side, just like the cells in the human trachea. The cultures also make mucus and have cilia that beat very quickly. "Because the organization of these cells greatly resembles the cells found in human tissues, they are a relevant system that can be used in a laboratory to study respiratory viruses," Dijkman explains.

The researchers have now used this existing model for the first time to study the effects of respiratory temperatures on SARS-CoV and SARS-CoV-2 replication. They found that temperature plays an important role as SARS-CoV-2 preferred to replicate at temperatures typically found in the upper airways (33°C). Colder incubation temperatures allowed the virus to replicate faster and to a higher extent than when infections were carried out at 37°C to mimic the lower lung environment. Unlike SARS-CoV-2, replication of SARS-CoV was not impacted by different incubation temperatures. The experiments were conducted both in the high security laboratory of the IVI in Mittelhäusern and in the biosafety laboratory of the Institute for Infectious Diseases (IFIK) at the University of Bern in the building of sitem-insel, the Swiss Institute for Translational Medicine and Entrepreneurship.

Temperature also influences the response from the epithelium

The team also analyzed which genes are turned on and off after infection with SARS-CoV and SARS-CoV-2 to understand how cells from the human respiratory tract respond to infection and which innate immune programs are activated. The innate immune system is our body's "first line of defense" against invading pathogens and is crucial not only to contain the invader, but also to teach other branches of the immune system how to react appropriately.

When mimicking the conditions found in the upper airways (33°C), the team found that infection with SARS-CoV-2 did not stimulate the innate immune response within these cells as strongly as it did when they mimicked conditions found in the [lower respiratory tract](#) (37°C). "Since the strength of the innate immune response can directly influence the degree of viral replication, this may help explain why SARS-CoV-2 replicated more efficiently at lower temperatures," says Dijkman. Although mounting a strong innate immune response against the virus is generally beneficial, it is important to note that in some cases the innate immune response can become overactivated. This in turn can be detrimental to the infected individual, as high levels of inflammation can also induce tissue

damage and accelerate disease progression—a phenomenon that is often seen in patients suffering from severe COVID19.

"The detailed analysis of SARS-CoV-2 replication and the [temperature](#)-induced changes in the host innate immune defense mechanisms helps explain why SARS-CoV-2 replicates so well in the upper respiratory tract, and is perhaps why SARS-CoV-2 exhibits higher human-to-human transmissibility than SARS-CoV," Dijkman explains.

Important knowledge to fight coronavirus infections

The use of this authentic cell culture model in a controlled laboratory setting proved to accurately reflect the different behavior of two similar viruses in the context of a pandemic. "This unique system provides insight into the molecular battle that occurs between virus and host during an infection and underscores the importance of subtle changes in the virus-host microenvironment that may impact virus replication and propagation," says Dijkman. Understanding which key players are involved in this process, and whether they favor the host or [virus](#), opens new opportunities for the establishment of highly targeted intervention strategies and the development of novel pharmaceutical compounds that will help combat coronavirus infections.

More information: Philip V'kovski et al, Disparate temperature-dependent virus–host dynamics for SARS-CoV-2 and SARS-CoV in the human respiratory epithelium, *PLOS Biology* (2021). [DOI: 10.1371/journal.pbio.3001158](https://doi.org/10.1371/journal.pbio.3001158)

Provided by University of Bern

APA citation: Why SARS-CoV-2 replicates better in the upper respiratory tract (2021, March 31)
retrieved 16 November 2022 from <https://medicalxpress.com/news/2021-03-sars-cov-replicates-upper-respiratory-tract.html>

This document is subject to copyright. Apart from any fair dealing for the purpose of private study or research, no part may be reproduced without the written permission. The content is provided for information purposes only.