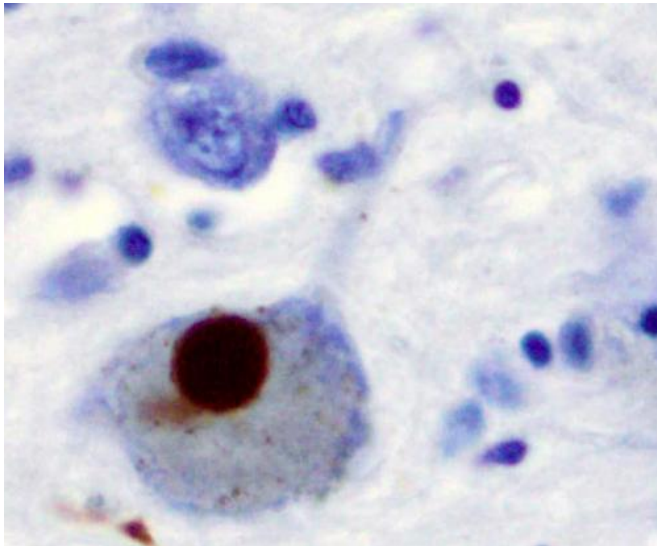


# Exercise may help slow cognitive decline in some people with Parkinson's disease

31 March 2021



Immunohistochemistry for alpha-synuclein showing positive staining (brown) of an intraneural Lewy-body in the Substantia nigra in Parkinson's disease. Credit: Wikipedia

For people with Parkinson's disease, problems with thinking and memory skills are among the most common nonmotor symptoms of the disease. A new study shows that exercise may help slow cognitive decline for some people with the disease. The study is published in the March 31, 2021, online issue of *Neurology*.

Research has suggested that people with Parkinson's who have the gene variant apolipoprotein E e4, or APOE e4, may experience faster [cognitive decline](#) and earlier in the [disease](#) than people without the variant. APOE e4 is known as a genetic risk factor for Alzheimer's disease. The study looked at whether exercise could play a role in slowing cognitive decline for people with APOE e4.

"Problems with thinking skills and memory can

have a [negative impact](#) on people's quality of life and ability to function, so it's exciting that increasing [physical activity](#) could have the potential to delay or prevent cognitive decline," said study author Jin-Sun Jun, M.D., of Hallym University in Seoul, Korea.

The study involved 173 people with early Parkinson's disease who were on average 63 years old at the time and 59 years old when they developed the disease. A total of 27% had the APOE e4 gene variant. People reported their physical activity with a questionnaire on how much activity they had in the previous week through [leisure activities](#) such as walking or biking, household activities such as dusting or yard work and [work activities](#) for pay or as a volunteer.

People took a test of their thinking skills at the beginning of the study and then one and two years later. Overall, scores at the beginning of the study averaged 26 points. For people with the APOE e4 gene variant, test scores declined by an average of 1.33 points by the end of the study compared to those without the variant. But researchers also found that greater physical activity at the start of the study lessened APOE e4-related cognitive decline two years later by an average of 0.007 points.

"Additional research is needed to confirm our findings, but these results would support the use of interventions that target physical activity as a way to delay cognitive decline in people with early Parkinson's who have the APOE e4 gene variant," Jun said.

A limitation of the study was that participants reported their own levels of physical activity, so there is the possibility that they would not remember their levels exactly.

Provided by American Academy of Neurology

APA citation: Exercise may help slow cognitive decline in some people with Parkinson's disease (2021, March 31) retrieved 11 June 2022 from <https://medicalxpress.com/news/2021-03-cognitive-decline-people-parkinson-disease.html>

*This document is subject to copyright. Apart from any fair dealing for the purpose of private study or research, no part may be reproduced without the written permission. The content is provided for information purposes only.*