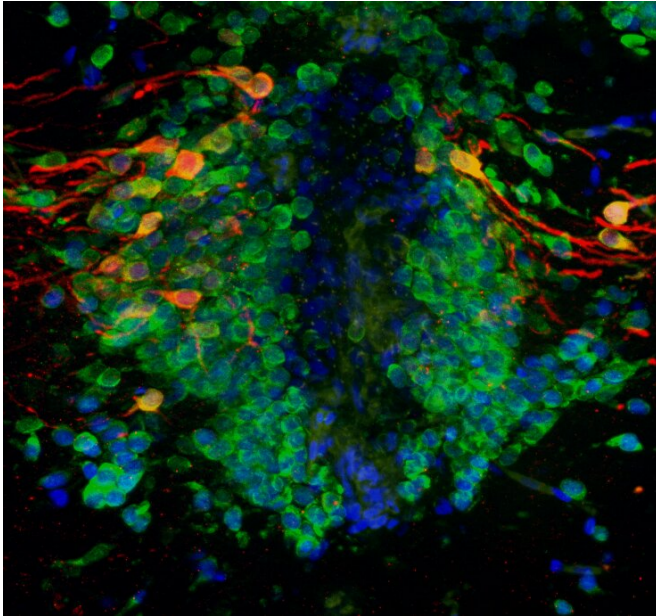


# Parkinson's gene may impair how new neurons are made throughout our lifetime

23 March 2021



Old (green) and newly made (orange) dopamine-producing nerve cells in the zebrafish brain. Credit: University of Sheffield

A pioneering study, published in *Scientific Reports*, found that the Parkinson's gene PINK1 is important for the generation of dopamine-producing neurons throughout life, and is not just responsible for the premature death of these neurons. The international research, led by University of Sheffield's Neuroscience Institute, used two model systems to examine how neurons are produced throughout our lifetime. Parkinson's disease is a relentlessly progressive neurodegenerative disorder that affects around 145,000 people in the UK. A gene defect linked to Parkinson's disease may not only cause the early death of neurons, but also impair the process that generates neurons in the brain throughout our lifetime, a new study has revealed.

The international study, led by the University of Sheffield's Neuroscience Institute, may have a

significant impact on the future treatment of Parkinson's patients who develop the illness due to PINK1 defect or similar gene defects.

The development of novel treatments and therapies to slow down [disease](#) progression, halt or reverse Parkinson's may now focus on enhancing the generation of new dopamine-producing neurons, rather than just trying to protect these neurons from dying later.

The findings, published today in *Scientific Reports*, used two model systems to measure how inactivation of the PINK1 gene affects dopamine-producing neurons in the adult brain.

Dopamine-producing neurons are the most severely affected brain cells in Parkinson's disease. It is typically thought that Parkinson's genes, such as PINK1, cause early death of these neurons, with symptoms developing when neuron numbers fall. However, here, researchers found that a deficiency in PINK1 resulted in fewer dopamine-producing neurons being made throughout life.

Professor Oliver Bandmann, Professor of Movement Disorders Neurology at the Sheffield Institute for Translational Neuroscience (SITraN), said: "Neurogenesis is the process by which new neurons are formed in the brain. Recent evidence suggests that this process is ongoing throughout life but the relevance of this is poorly understood in neurodegenerative disorders such as Parkinson's disease."

"We know that mutations in the PINK1 gene cause an early onset, inherited form of Parkinson's disease. If we can further our understanding about the impact of this genetic mutation on the dopamine-producing neurons we can develop new therapeutic approaches that aim to mitigate those effects."

In collaboration with the University of Luxembourg, researchers used two complementary model

systems to examine how neurons are reproduced throughout our lifetime.

Provided by University of Sheffield

Professor Marysia Placzek, Professor of Developmental Neurobiology in the Department of Biomedical Science, said: "This study attests to the power of using simple model organisms for pre-clinical translational research. We used the zebrafish to demonstrate that dopamine-producing neurons are generated into adulthood at a rate that decreases with age and that PINK1-deficiency impairs neurogenesis of these [neurons](#), significantly in early adult life. Our international collaborators then confirmed these results in a human organoid cell model."

The observation of impaired adult dopaminergic neurogenesis in PINK1 deficiency in two complementing model systems may have significant consequences for future therapeutic approaches in Parkinson's disease. Future research will aim to identify the precise mechanisms that link Parkinson's [genes](#) to neurogenesis. This will allow us to explore the development of gene therapy or small molecule approaches to enhance neurogenesis in the brain of patients with Parkinson's. The development of new therapies for brain diseases like Parkinson's is the main focus of the Sheffield Institute for Translational Neuroscience (SITraN).

The research was funded by the Medical Research Council (MRC), Parkinson's UK and the Wellcome Trust.

Parkinson's disease is the second most common neurodegenerative disease, with approximately 10 million people affected worldwide. Currently, only symptomatic treatment options are available to patients.

The University of Sheffield launched a sustained fundraising effort for Parkinson's disease research at the end of 2019. Since then, Sheffield staff, students, alumni and the general public have come together to raise more than £350,000 so far. The ongoing efforts of this campaign are set to continue as Sheffield dedicates itself to backing the next breakthrough.

APA citation: Parkinson's gene may impair how new neurons are made throughout our lifetime (2021, March 23) retrieved 30 September 2022 from <https://medicalxpress.com/news/2021-03-parkinson-gene-impair-neurons-lifetime.html>

*This document is subject to copyright. Apart from any fair dealing for the purpose of private study or research, no part may be reproduced without the written permission. The content is provided for information purposes only.*