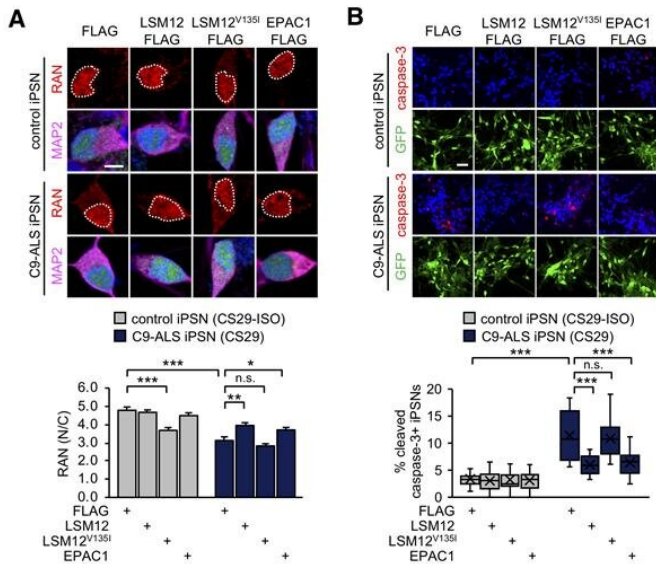


Scientists identify genetic pathway that suppresses Lou Gehrig's Disease

19 March 2021



Overexpression of LSM12 or EPAC1 rescues NCT-relevant pathologies in C9-ALS patient-derived neurons. (A) Overexpression of LSM12 or EPAC1 rescues the RAN gradient in C9-ALS iPSNs. NPCs from C9-ALS iPSCs (CS29) and their isogenic control cells (CS29-ISO) were transduced with individual recombinant lentiviruses that express the indicated FLAG-tagged proteins along with a GFP reporter. (B) Overexpression of LSM12 or EPAC1 suppresses caspase-3 activation in C9-ALS iPSNs. Credit: Ulsan National Institute of Science and Technology

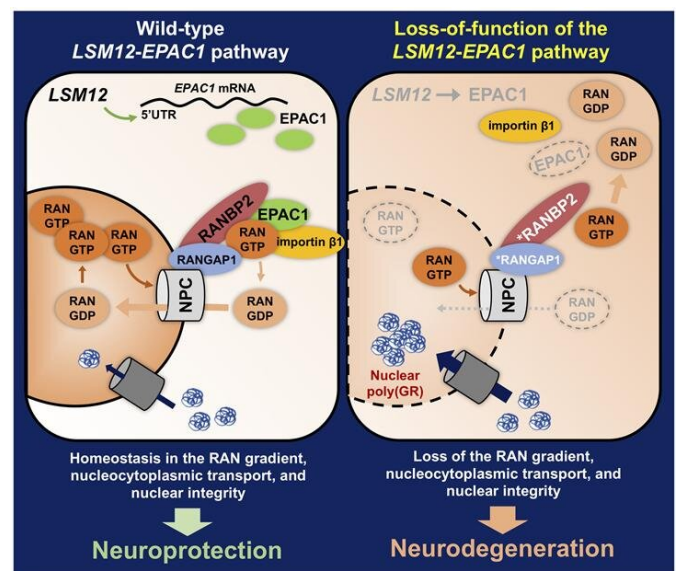
Professor Chunghun Lim and his research team in the Department of Biological Sciences unveiled a neuroprotective pathway that suppresses Lou Gehrig's Disease (ALS).

Nucleocytoplasmic transport (NCT) defects have been implicated in [neurodegenerative diseases](#), such as C9ORF72-associated [amyotrophic lateral sclerosis](#) and [frontotemporal dementia](#) (C9-ALS/FTD). In this study, the research team has identified a neuroprotective pathway of like-Sm protein 12 (LSM12) and exchange protein directly

activated by cyclic AMP 1 (EPAC1) that sustains the nucleocytoplasmic RAN gradient and thereby suppresses NCT dysfunction by the C9ORF72-derived poly (glycine-arginine) protein.

The research team found that the LSM12-EPAC1 pathway is an important suppressor of the NCT-related pathologies in C9-ALS/FTD. The EPAC1 protein, which was expressed in this genetic pathway, normalizes the abnormal RAN gradient that determines the transport direction between the [cell nucleus](#) and the cytoplasm, thereby restoring its cellular function.

In general, the RAN proteins are more abundant in the cell nucleus, but in patients with Lou Gehrig's disease, they begin to leak out into the cytoplasm, thereby resulting in abnormal concentration differences. Their findings revealed that the EPAC1 protein, which was expressed through the LSM12-EPAC1 pathway, indeed helped EPAC1 return to the cell nucleus, thereby restoring the RAN gradient.



The LSM12-EPAC1 pathway, as an important suppressor

of the NCT-related pathologies in C9-ALS/FTD. Credit:
UNIST

The research team also identified that the EPAC1 protein, which was expressed through the LSM12-EPAC1 pathway, regulates the distribution of RAN proteins. The EPAC1 protein increases the binding force between the nuclear pore complex (NPC) and the RAN proteins. Because of this, RAN proteins lost within the cytoplasm are, then, captured by the NPC and returned to the nucleus.

"Although the distribution of RAN proteins is critical for the nucleocytoplasmic transport (NTC), its molecular biological mechanism has relatively been unknown," says Professor Lim. "In this study, we have identified that LSM12-EPAC1 defines a neuroprotective pathway that sustains the nucleocytoplasmic RAN gradient."

He adds, "Our findings are expected to contribute greatly to the prediction and treatment of neurodegenerative diseases, such as frontotemporal dementia and Lou Gehrig's disease, as well as for the understanding of the molecular mechanisms underlying aging."

More information: Jongbo Lee et al.

LSM12-EPAC1 defines a neuroprotective pathway that sustains the nucleocytoplasmic RAN gradient, *PLoS Biology* (2020). DOI: [10.1371/journal.pbio.3001002](https://doi.org/10.1371/journal.pbio.3001002)

Provided by Ulsan National Institute of Science and Technology

APA citation: Scientists identify genetic pathway that suppresses Lou Gehrig's Disease (2021, March 19) retrieved 23 April 2021 from

<https://medicalxpress.com/news/2021-03-scientists-genetic-pathway-suppresses-lou.html>

This document is subject to copyright. Apart from any fair dealing for the purpose of private study or research, no part may be reproduced without the written permission. The content is provided for information purposes only.