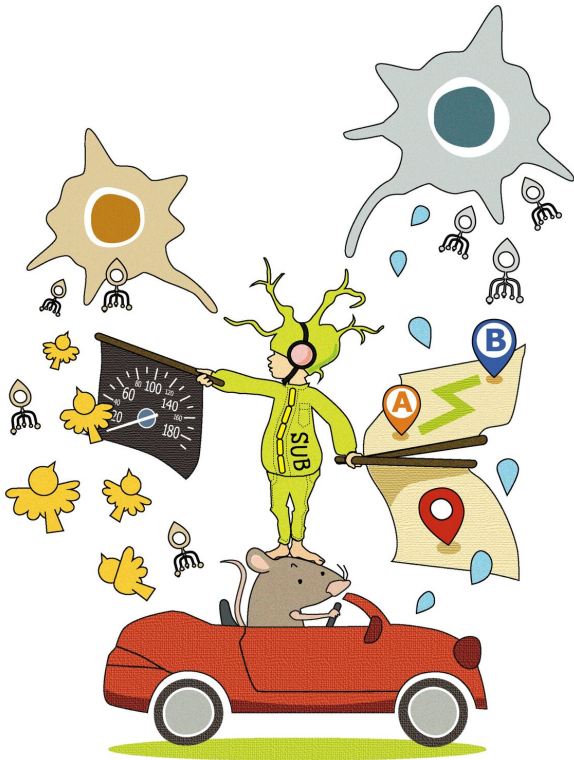


# Where am I going? Just ask your subiculum

10 March 2021



The subiculum in the rat brain is routing three types of spatial information. Credit: Takuma Kitanishi

The hippocampus is the part of the brain that deals with information associated with spatial navigation and memory. For example, you are driving and despite the changing environment of different cars going at varying speeds, on and off ramps, distracting billboards, etc., you adjust your speed, glance only momentarily at the billboards, and navigate the roads in a smooth and timely manner. This is your hippocampus at work. It takes the input—a continuously changing environment—and helps turn it into the output—using memory of a road map to safely navigate your way. However, little is known about how information is distributed from the hippocampus to other brain regions that results in the output behavior.

A research team led by Lecturer Takuma Kitanishi and Professor Kenji Mizuseki of the Department of Physiology, OCU Graduate School of Medicine have clarified for the first time that [spatial information](#) received from the hippocampus is further directed downstream by a region of the brain called the subiculum.

"The hippocampus processes [information](#) we are all familiar with in our [daily life](#)—from our commute to work to going to see grandma," says Kitanishi, "however, commonly used methods of measuring [brain activity](#) have not allowed us to know to which brain region the hippocampus transmits information."

The team devised a method to track this inter-regional flow of neuronal activity. Combining large-scale neuronal activity recording and multi-site optical stimulation, they measured the brain activity of free-moving rats. What they found was that while the hippocampus received and transmitted a wide range of information, the subiculum routed the information inherited from the hippocampus in a noise-resistant manner. Think of the subiculum as the sorting office of your local hippocampal postal service.

"We found that information on "speed" and "trajectory" was selectively transmitted to the [retrosplenial cortex](#) and nucleus accumbens regions of the brain, respectively, while information on "place" was equally distributed among four regions: the nucleus accumbens, anteroventral thalamus, mammillary body, and retrosplenial cortex," states Kenji Mizueki.

The team also observed that the theta brain waves and sharp-wave/ripples emitted from the subiculum controlled the timing of information transmission depending on which region of the [brain](#) the subicular neurons targeted and the timing was precisely managed down to the millisecond. This could help explain the selective nature of the subiculum and why your awareness of the changing environment and continuous updates to

your driving all happen at the same time.

The team plans to use their new method of tracking neuronal activity on a wider scale. "Next, we will include hippocampal information generated by peripheral sensory inputs," states Kitanishi. Using this research as a basis for a comprehensive understanding of the hippocampal memory system, "We even hope to shed light on disorders associated with hippocampal malfunction such as dementia."

The study is published in *Science Advances*.

**More information:** "Robust information routing by dorsal subiculum neurons" *Science Advances* (2021). [advances.sciencemag.org/lookup ... .1126/sciadv.abf1913](https://advances.sciencemag.org/lookup?...1126/sciadv.abf1913)

Provided by Osaka City University

APA citation: Where am I going? Just ask your subiculum (2021, March 10) retrieved 4 June 2022 from <https://medicalxpress.com/news/2021-03-subiculum.html>

*This document is subject to copyright. Apart from any fair dealing for the purpose of private study or research, no part may be reproduced without the written permission. The content is provided for information purposes only.*