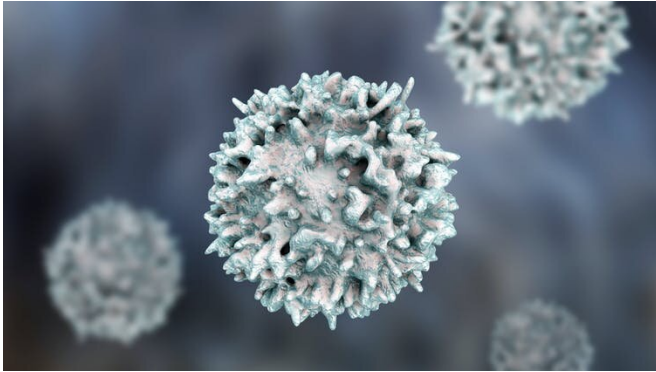


Parkinson's disease: Blood changes may occur years before diagnosis

2 March 2021, by Alastair Noyce



Lymphocytes play an important role in the immune system. Credit: [Kateryna Kon/ Shutterstock](#)

Although Parkinson's disease affects around [1%-2% of people over the age of 65](#), there is currently no cure. And by the time it is diagnosed—typically by identifying problems with movement, such as slower movements and tremors—the changes in the brain it causes are irreversible. So being able to identify Parkinson's earlier will be important in finding ways to prevent and cure the disease.

In our latest study, my colleagues and I have identified changes in blood that occur years before a Parkinson's diagnosis. This could lead to earlier diagnosis of the [disease](#).

The causes of Parkinson's aren't completely understood, but clear links have been established with genetic and environmental risk factors—such as exposure to certain [pesticides and solvents](#). However, we do know that Parkinson's disease causes the death of certain nerve cells in the brain, [due to a combination](#) of abnormal protein accumulation in cells, problems with mitochondria (the "power stations" of each cell), inflammation and changes in the immune system.

In [our study](#), we set out to examine markers of inflammation that circulate in the blood of patients with Parkinson's disease. We found people who later developed Parkinson's disease had fewer lymphocytes—a type of white blood cell. We also found that this change may occur at least eight years before diagnosis and may contribute to the risk of being diagnosed with Parkinson's.

Lymphocytes are one of five types of white blood cell that aid the body's immune response. There are two distinct sub-types of lymphocytes: B cells and T cells. B cells produce antibodies that identify and neutralize harmful microbes, while T cells control how other immune cells respond to these microbes.

To conduct our study, we used data from the UK Biobank cohort. This project recruited approximately 500,000 participants between 2006 and 2010 to study how genetics and the environment impact a wide range of diseases. Blood was collected from participants at enrolment and they had ongoing follow-up appointments throughout. Any new health conditions they were diagnosed with appeared on their health care record, which could then be linked to their UK Biobank data.

From this cohort, we identified people who had been diagnosed with Parkinson's during follow-up and compared them to people who had not been diagnosed with the disease. We looked at various markers of inflammation that circulate in the blood, such as the presence of certain proteins and immune cells.

Lymphocytes

In our first analysis of the data, we found several inflammatory markers were associated with a later diagnosis of Parkinson's disease. But as we worked through further sub-analyses, we narrowed in on lower lymphocyte count as the main difference

between those who did and didn't develop the disease.

[original article](#).

We then went on to examine whether changes in lymphocyte count might cause Parkinson's, or were merely a result of the disease. To do this we used a method called [Mendelian randomisation](#). This allows us to look at a person's genetics, and infer whether changes are cause or effect. We found [genetic evidence](#) to support that lower lymphocyte count increases Parkinson's disease risk, as opposed to simply being a sign of undiagnosed Parkinson's disease.

[Previous studies](#) have shown that lymphocytes are on average lower in patients with Parkinson's disease and that this could be driven by potential reductions in both B and T cells. However, once a diagnosis of Parkinson's has been made and medication started, other factors—such as the effect of medication—may explain lower lymphocyte counts. Our research shows these changes occur before the disease develops.

Provided by The Conversation

Prior to our research, only [one study](#) had shown that lymphocyte count may be lower prior to being diagnosed with Parkinson's disease and may be a driver of the disease. Our study builds on this work and confirms that changes in lymphocyte count may be picked up on routine blood tests years before diagnosis, and may be linked to increased risk of Parkinson's disease. However, we don't yet know why lymphocyte count decreases.

There's still a lot more work that needs to be done before the importance of this finding is fully known. For example, future research will need to investigate which lymphocyte types (B cells or T [cells](#)) are lower. Another important question is why lymphocytes are low. Is [lymphocyte](#) production slowed, their lifespan shortened, or are they moving out of the [blood](#) into a different part of the body (such as the brain)? Once further work has been done we might better know how to build on this knowledge to develop better treatments for Parkinson's disease—and perhaps even methods to prevent it.,

This article is republished from [The Conversation](#) under a Creative Commons license. Read the

APA citation: Parkinson's disease: Blood changes may occur years before diagnosis (2021, March 2) retrieved 26 May 2021 from <https://medicalxpress.com/news/2021-03-parkinson-disease-blood-years-diagnosis.html>

This document is subject to copyright. Apart from any fair dealing for the purpose of private study or research, no part may be reproduced without the written permission. The content is provided for information purposes only.