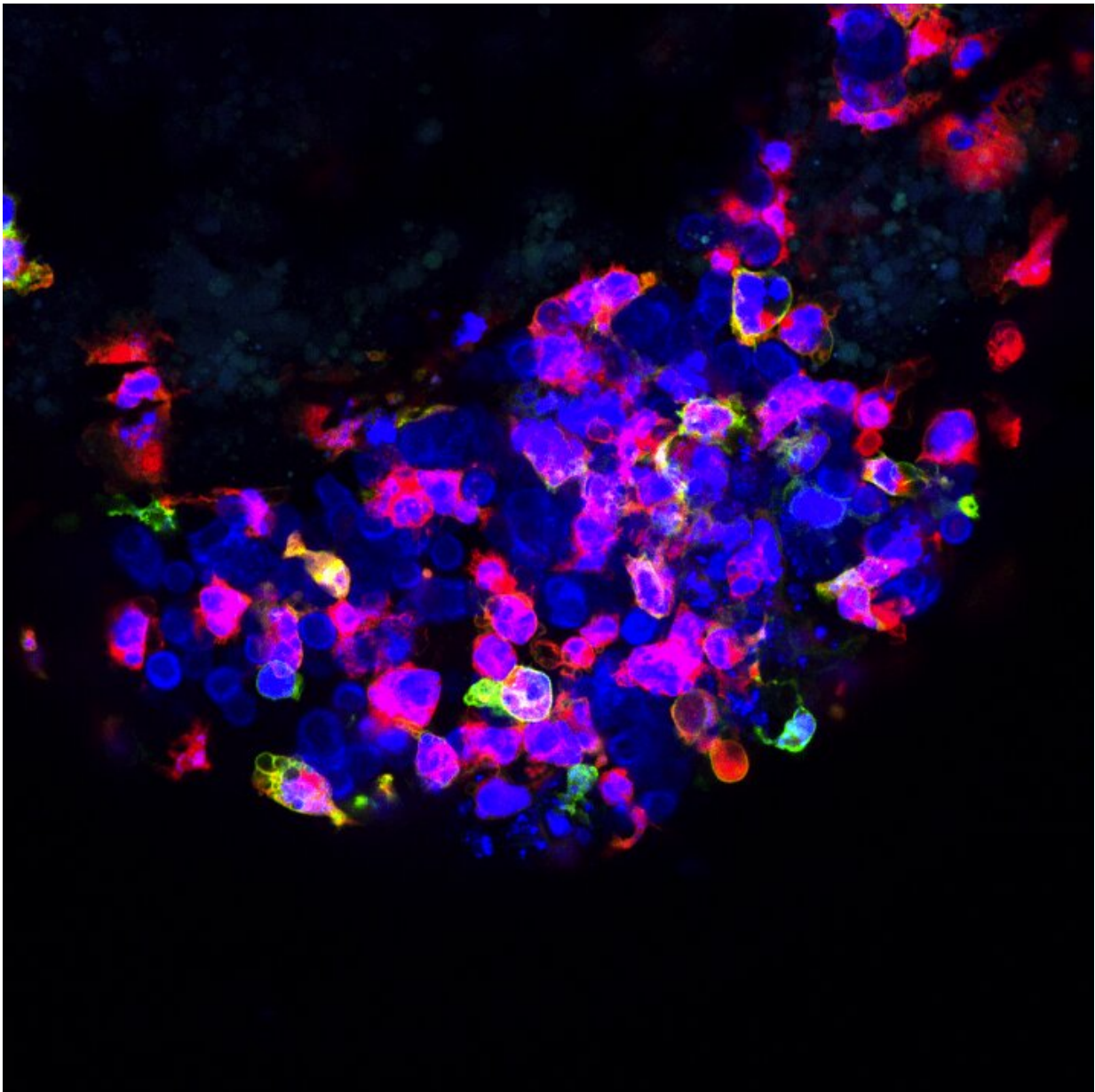


# Good cop, bad cop: What can zebrafish tell us about immune-cancer relations?

February 19 2021

---



Human tumor cells (in blue) being eliminated by macrophages (pink/yellow) in Zebrafish. Credit: Vanda Póvoa, Champalimaud Foundation

Cancer researcher Rita Fior uses zebrafish to study human cancer. Though this may seem like an unlikely match, her work shows great promise with forthcoming applications in personalized medicine.

The basic principle of Fior's approach relies on transplanting [human cancer](#) cells into dozens of zebrafish larvae. The fish then serve as "living test tubes," subjects in which treatments such as chemotherapy drugs can be tested to reveal which works best. The assay is rapid, producing an answer within four short days.

Some years ago, when Fior was developing this assay, she noticed something curious. "The majority of human tumor cells successfully engrafted in the fish, but some tumors didn't. They would just disappear within a day or two. However, when I treated the transplanted fish with chemotherapy, these tumors would not disappear. They engrafted much more," she recalls.

This seemingly paradoxical observation triggered a new working hypothesis. "Chemotherapy suppresses the immune system," Fior explains. "If the tumor is rejected under normal conditions, but thrives in immuno-suppressed animals, then this points toward a new explanation: The fish's immune system is actively destroying the cancer cells. Whereas in the ones that implant well, the tumor is able to suppress the fish's immune system."

Soon after, Fior, together with Vanda Povoá, a doctoral student in her lab at the Champalimaud Centre for the Unknown in Portugal, set off on a new research project. Its main conclusions, published today in the

journal *Nature Communications*, advance the understanding of how cancer-immune interactions may lead to immunotherapy resistance and tumor growth. In the long run, these results may contribute to the development of new treatments and diagnostics.

## Good Cop

Following this serendipitous observation, the researchers began systematically investigating why certain tumors are eliminated while others survive. They focused on a pair of human colorectal cancer cells that were derived from the same patient but showed these contrasting behaviors. One was derived from the [primary tumor](#) and was constantly rejected from the fish, whereas the other was derived from a lymph node metastasis but implanted very efficiently.

They started by characterizing the immune cells that were summoned to the tumor site. Specifically, they zoomed in on cells of a subsystem called the [innate immune system](#).

"Contrary to mature zebrafish, the larvae only have innate immunity, which is the body's first line of defense. This offers a vantage point to study the role of innate immune cells in cancer, which is not very well understood," Fior explains.

The team proceeded to quantify the number and type of innate immune cells in the tumor microenvironment. The primary tumor [which is rejected] was swarming with innate immune cells. But in contrast, the well-implanted metastatic tumor showed very sparse numbers of innate immune cells.

This result indicated that the researchers' hunch was correct. But to be sure, they had to artificially reduce the number of innate immune cells in the fish using selective genetic and chemical approaches. As expected,

this manipulation prevented the cells from being rejected.

Together, these results show a clear role for the innate immune system in eliminating tumor cells. But if the immune system is so good at getting rid of "fresh" cancer cells from the primary tumor, why would metastasis happen?

## **Bad Cop**

"The reason is that the relationship between cancer and the immune system is far from static," says Fior. "At the beginning, cancer cells may simply try to hide from the immune system. But with time, they learn how to confuse and finally corrupt immune cells. This evolution happens through a dynamic process called immunoediting. If the process is successful, the corrupted cells begin supporting the tumor in many ways, including sending away other immune cells that could vanquish the tumor."

Is the innate immune system per se able to do cancer immunoediting? "Our results show that yes, it does indeed. This is the second study, to our knowledge, that shows this phenomenon," adds Pova.

The researchers observed that tumor cells not only recruit different numbers of innate [immune cells](#) but can also change their function. Instead of fighting the tumor, macrophages began supporting and protecting it. Alarmingly, the researchers demonstrated that this transformation happens very quickly.

"Even though most cells from the primary tumor are rejected within a day or two, some survive. When we transplanted this small group of survivors back into the fish, we discovered that they had already acquired immune-editing capabilities. In fact, they engrafted almost as well as cells from metastatic tumors," Pova says.

The researchers also compared the genetic profile of metastatic and primary tumor [cells](#) and identified several interesting features. "We now have a list of candidate genes and molecules that we plan to study. We hope that by pinpointing the mechanism by which [cancer cells](#) suppress and corrupt the innate [immune system](#) we will be able to find ways of blocking this process," Fior adds.

### **Giving immunotherapy a boost**

Fueled by this exciting set of results, Fior and Pova are full of plans for the future. "There are so many things we can do," says Fior. "For instance, we now know that our zebrafish assay can tell if the tumor environment is immunosuppressive in just a few days. Immunotherapy is less likely to be effective in these cases. Therefore, our assay may become useful to help determine which patients will benefit mostly from immunotherapy."

Another angle the team is considering is the development of new immunotherapy approaches. "The majority of immunotherapy drugs do not rely on innate immunity. They boost other immune subsystems. But as we saw, innate immunity has a great capacity for fighting [cancer](#). Therefore, identifying the mechanisms that amplify this effect will allow us to devise new potential therapies, which could be combined with existing ones to increase their efficacy," she says.

**More information:** *Nature Communications* (2021). [DOI: 10.1038/s41467-021-21421-y](https://doi.org/10.1038/s41467-021-21421-y)

Provided by Champalimaud Centre for the Unknown

Citation: Good cop, bad cop: What can zebrafish tell us about immune-cancer relations? (2021,

February 19) retrieved 21 April 2023 from <https://medicalxpress.com/news/2021-02-good-cop-bad-zebrafish-immune-cancer.html>

This document is subject to copyright. Apart from any fair dealing for the purpose of private study or research, no part may be reproduced without the written permission. The content is provided for information purposes only.