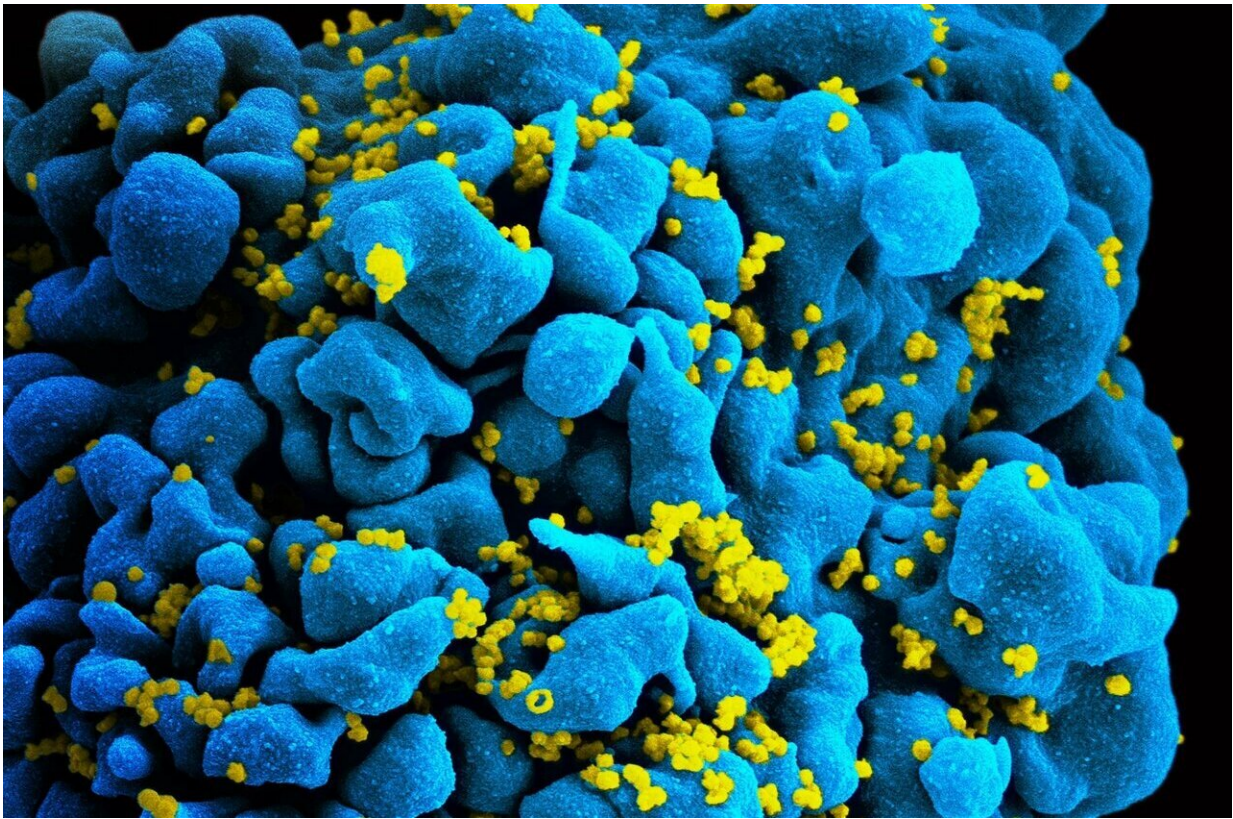


# A new piece of the HIV infection puzzle explored

February 18 2021

---



Scanning electromicrograph of an HIV-infected T cell. Credit: NIAID

Scientists at EMBL Heidelberg and at the Zentrum für Infektiologie at Heidelberg University Hospital have succeeded for the first time in imaging HIV during transport into the nucleus of an infected cell. The

electron tomographic images show the protein envelope of the virus passing through one of the nuclear pores—the openings in the membrane around the nucleus that allow molecules in and out. The scientists found that the virus passes through the nuclear pore intact, only breaking apart inside the nucleus, where it releases its genetic information. This clarifies an important mechanism by which the virus's genetic material is integrated into the genome of the infected cell.

The human immunodeficiency [virus](#) type 1 (HIV-1)—which was the focus of this study—primarily infects certain [cells](#) of the immune system, and in this way massively weakens the body's own defense against diseases. The genetic material of the virus is securely packaged in a cone-shaped protein capsule known as the capsid, which is composed of individual hexagonal parts. Scientists knew how the capsid passes through the cell membrane into the interior of the cell during infection, but not how the virus's genetic material gets from the capsid into the cell nucleus, where it triggers the formation of new viruses.

This is where the work of the Heidelberg collaboration comes in. Using newly developed methods for 3-D imaging of molecular complexes in virus-infected cells, the scientists succeeded in imaging the viral capsid directly during transport into the nucleus. "Until now, it was assumed that the capsid does not fit through the pores," explains Hans-Georg Kräusslich, Medical Director of the Zentrum für Infektiologie. "However, the question of how the viral genome gets into the cell [nucleus](#) is essential for its reproduction. Our results therefore support the search for new targets for future therapeutic approaches." Although current treatment options can suppress multiplication of the virus in the body, a true cure that eliminates the virus is not yet possible.

## **Platforms for high-resolution imaging**

To get a detailed look at the inner workings of infected immune cells in

the laboratory, the scientists used high-resolution imaging techniques. With the help of the Electron Microscopy Core Facility at Heidelberg University and the Cryo-Electron Microscopy Service Platform at EMBL Heidelberg, they combined light and electron microscopy methods. They were able to reconstruct 3-D images of the molecular structures from their data. This allowed them to visualize the composition and architecture of the viral complexes and their interaction with cellular structures in high resolution. "The fruitful collaboration between our two institutions and the combination of specialized technology has helped to fit another piece of the HIV infection puzzle into the overall picture," says Martin Beck, a visiting group leader at EMBL and, since 2019, a Director and Scientific Member of the Max Planck Institute of Biophysics.

**More information:** Vojtech Zila et al, Cone-shaped HIV-1 capsids are transported through intact nuclear pores, *Cell* (2021). [DOI: 10.1016/j.cell.2021.01.025](https://doi.org/10.1016/j.cell.2021.01.025)

Provided by European Molecular Biology Laboratory

Citation: A new piece of the HIV infection puzzle explored (2021, February 18) retrieved 24 February 2024 from <https://medicalxpress.com/news/2021-02-piece-hiv-infection-puzzle-explored.html>

<p>This document is subject to copyright. Apart from any fair dealing for the purpose of private study or research, no part may be reproduced without the written permission. The content is provided for information purposes only.</p>
--