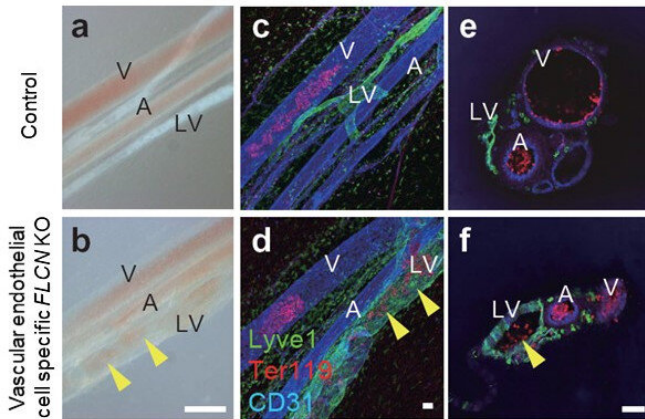


How blood and lymph vessels remain separated after development

5 February 2021



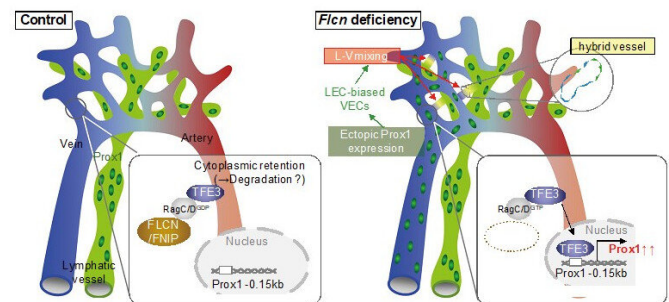
Mesenteric images in wild-type (a, c, e) and vascular endothelium-specific *Flcn*-deficient (b, d, f) mice. In endothelium-specific *Flcn*-deficient mice, blood vessels and lymphatic vessels are abnormally anastomosed, and red blood cells flow into the lymphatic vessels. Credit: Associate Professor Masaya Baba

Researchers from Kumamoto University (Japan) have clarified the mechanism by which blood and lymph vessels remain segregated from one another after development. The characteristics and structures of these two vessel types are very similar, and how they maintain separation has remained unexplained for many years. In this study, researchers found that the molecule Folliculin (FLCN) in vascular endothelial cells acts as a gatekeeper to maintain that separation.

Blood and lymphatic vessels form independent networks until the final confluence at the left and right venous angles in the neck. Blood vessels act as a pipeline that transports oxygen from the lungs to tissues throughout the body. Lymphatic vessels, on the other hand, take in tissue fluids that cannot be collected by [blood vessels](#) and act as part of the immune system. However, blood and lymph vessel characteristics and structures are very

similar so how they maintain separation from each other has long been a mystery. The elucidation of this mechanism could provide the foundation for the development of novel therapeutic approaches to human lymphatic disorders. For example, the creation of a bypass (a venous-lymphatic shunt) allowing clogged lymphatic flow to return directly to veins would become an innovative therapy for postoperative lymphedema. Thus, researchers around the world have been looking into blood-lymphatic vessel separation mechanisms, but it is still not completely understood.

In this study, researchers first focused on *FLCN*, the causative gene of a genetic disorder with typical symptoms of multiple lung cysts, [kidney cancer](#), and benign skin tumors (Birt-Hogg-Dube syndrome). They found that mice that were missing the *Flcn* gene in vascular [endothelial cells](#) had abnormal anastomosis between blood and [lymph vessels](#) that resulted in fetal death. Furthermore, even in postnatal mice with normal blood and lymphatic vessel separation, induced *Flcn* gene depletion in endothelial [cells](#) caused abnormal anastomosis between the two [vessel](#) types.



Normally, FLCN keeps the transcription factor TFE3 in the cytoplasm and suppresses the expression of *Prox1* in veins. When *FLCN* is deleted, TFE3 migrates into the nucleus and *Prox1* is expressed resulting in the appearance of venous endothelial cells that resemble lymphatic vessels. In other words, FLCN acts as a gatekeeper that regulates the plasticity of blood and

lymphatic vessels, maintaining the separation between them. Credit: Associate Professor Masaya Baba

Fln deficiency gives rise to lymphatic-biased vascular endothelial cells. These cells cause anastomosis between blood and lymphatic vessels. Prox1 is a central transcription factor in the regulation of lymphangiogenesis and its expression is suppressed by *Fln* in venous endothelial cells to maintain the identity of vascular endothelial cells. However, when *Fln* regulation in [vascular endothelial cells](#) is lost, Prox1 becomes expressed, making venous endothelial cells lymphatic biased. Researchers also found that deletion of *Fln* results in the translocation of the transcription factor Tfe3, which is normally in the cytoplasm, into the nucleus where it directly upregulated Prox1 expression. In fact, when *Fln* knockout mice were crossed with *Tfe3* knockout mice, Prox1 was not expressed in the absence of both *Tfe3* and *Fln*, and lymphatic biased venous endothelial cells were not seen. These results demonstrate that FLCN acts as a gatekeeper that regulates the plasticity and maintains the separation of blood and [lymphatic vessels](#).

"These results are of great academic importance in that they have clarified a biological question that has gone unanswered for many years: Why do two very similar circulatory systems in the body, [blood](#) and lymph vessels, form and maintain independent networks? From a clinical point of view, this has the potential to provide clues on the mechanism of cancer metastasis and can potentially be developed into a treatment for lymphedema," said Associate Professor Masaya Baba, who led the study. "In cancer surgery, lymph node removal can result in serious edema in the upper and lower limbs due to decreased ability to drain lymphatic fluid. Physical therapy, elastic stockings, and lymphovenous anastomosis are listed as treatment methods, but even with skilled microsurgery techniques, it is difficult to treat sufficiently. Out of this research, we envision a future innovative treatment for lymphedema where we can pharmaceutically intervene in the signaling pathway of FLCN to artificially create a shunt that locally connects veins and lymph vessels."

This research was posted online in *Nature Communications* on 9 December 2020 and was selected as one of *Nature Communications* Editor's Highlights.

More information: Ikue Tai-Nagara et al, Blood and lymphatic systems are segregated by the FLCN tumor suppressor, *Nature Communications* (2020). [DOI: 10.1038/s41467-020-20156-6](https://doi.org/10.1038/s41467-020-20156-6)

Provided by Kumamoto University

APA citation: How blood and lymph vessels remain separated after development (2021, February 5)
retrieved 3 July 2022 from <https://medicalxpress.com/news/2021-02-blood-lymph-vessels.html>

This document is subject to copyright. Apart from any fair dealing for the purpose of private study or research, no part may be reproduced without the written permission. The content is provided for information purposes only.