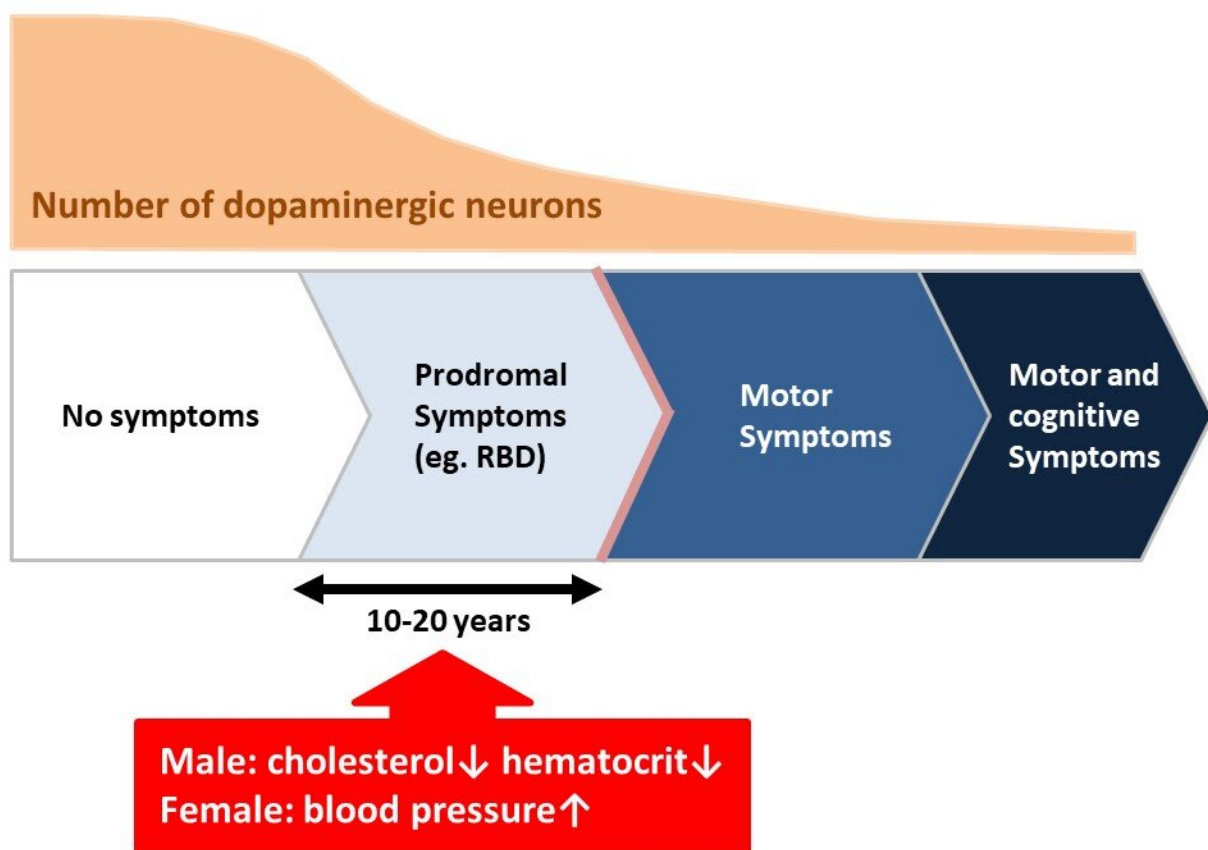


General health checkups may detect early signs of Parkinson's disease

January 18 2021



Parkinson's disease (PD) is a neurodegenerative disorder caused by the loss of dopaminergic neurons and characterized by motor signs including bradykinesia, rigidity, resting tremor, and reduced postural reflex. More than 50% of dopaminergic neurons in the substantia nigra are lost at the onset of motor symptoms in PD. Prodromal symptoms, such as dysautonomia, REM sleep behavior disorder (RBD), and hyposmia, trigger the onset of motor cognitive

dysfunction by 10-20 years. Our current results showed a premotor blood pressure increase in female patients with PD, and premotor decreases in hematocrit, total cholesterol, and low-density lipoprotein cholesterol in male PD patients. Health examination, in combination with other evaluations, may facilitate early detection of PD before the onset of motor symptoms. Credit: Masahisa Katsuno

A research team led by Nagoya University in Japan has found that blood pressure, the hematocrit (the percentage of red blood cells in blood), and serum cholesterol levels change in patients with Parkinson's disease long before the onset of motor symptoms. This finding, which was recently published online in *Scientific Reports*, may pave the way for early diagnosis and treatment of the disease.

Parkinson's [disease](#), the second most common disease affecting the nervous system after Alzheimer's disease, is caused by a deficiency in a neurotransmitter called dopamine. It is known that more than half of all dopaminergic neurons are already lost in patients with Parkinson's disease in the stage wherein they experience motor symptoms such as tremors, stiffness, and slowness of movement. In addition, previous studies have shown that non-motor symptoms, such as constipation, rapid eye movement sleep behavior disorder, impairment of the sense of smell, and depression, emerge in patients with Parkinson's disease 10 to 20 years before the onset of motor symptoms.

These results suggest that Parkinson's disease develops decades before the onset of motor symptoms. "If we can detect biological changes in the patients' bodies well before the onset of the motor symptoms, we can start medical treatments in an early stage," says Professor Masahisa Katsuno of the Graduate School of Medicine at Nagoya University. From this perspective, the research team led by Prof. Katsuno and

Katsunori Yokoi, the lead author and graduate student at Nagoya University, focused on the results of general health checkups, which are carried out among individuals yearly in Japan.

The team analyzed multiple years of data from the checkups of 22 male and 23 female patients with Parkinson's disease whose checkup results before the onset of motor symptoms were available. For comparison, the team also used data from the checkups of 60 male and 60 female healthy individuals who underwent checkups for at least four years.

The researchers first compared the baseline values of each checkup item between patients with Parkinson's disease and healthy individuals separately by sex. In male patients, the weight, body mass index, hematocrit, total and low-density cholesterol levels, and serum creatinine levels were lower than those in healthy male individuals. In female patients, the levels of [blood pressure](#) and an enzyme called aspartate aminotransferase were higher, while other items' values were lower compared to those in healthy female individuals.

Next, the researchers examined longitudinal changes in the checkup items in patients with Parkinson's disease before the onset of motor symptoms. As a result, they found that in the premotor stage, blood pressure levels are increased in [female patients](#), whereas total and low-density cholesterol levels and the hematocrit are decreased in male patients. Regarding other checkup items, no significant changes were observed.

"In this study, we found that blood pressure, hematocrit, and serum cholesterol levels are potential biomarkers of Parkinson's disease before the onset of its [motor](#) symptoms," says Prof. Katsuno. "This finding indicates that general health checkups can help detect early signs of developing Parkinson's disease." In this context, his team is now pursuing studies to identify individuals who are at high risk for the

disease based on checkup examinees. "We are also conducting clinical trials of medication in the individuals who are considered, based on their checkup data, to be at high risk for Parkinson's, in an attempt to prevent the development of the disease in them."

More information: Katsunori Yokoi et al. Longitudinal analysis of premotor anthropometric and serological markers of Parkinson's disease, *Scientific Reports* (2020). [DOI: 10.1038/s41598-020-77415-1](https://doi.org/10.1038/s41598-020-77415-1)

Provided by Nagoya University

Citation: General health checkups may detect early signs of Parkinson's disease (2021, January 18) retrieved 2 April 2023 from <https://medicalxpress.com/news/2021-01-health-checkups-early-parkinson-disease.html>

This document is subject to copyright. Apart from any fair dealing for the purpose of private study or research, no part may be reproduced without the written permission. The content is provided for information purposes only.