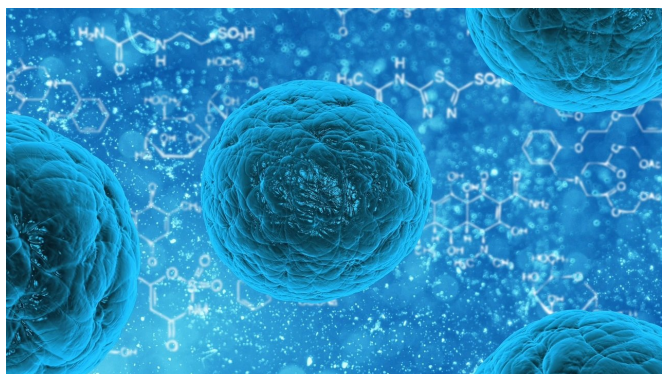


Protein twist and squeeze confers cancer drug resistance

29 December 2020



Credit: CC0 Public Domain

In 1986, cellular biochemist Kazumitsu Ueda, currently at Kyoto University's Institute for Integrated Cell-Material Sciences (iCeMS), discovered that a protein called ABCB1 could transport multiple chemotherapeutics out of some cancer cells, making them resistant to treatment. How it did this has remained a mystery for the past 35 years. Now, his team has published a review in the journal *FEBS Letters*, summarizing what they have learned following years of research on this and other ATP-binding cassette (ABC) transporter proteins.

ABC [transporter proteins](#) are very similar across species and have various transportation roles: importing nutrients into cells, exporting toxic compounds outside them, and regulating lipid concentrations within cell membranes.

ABCB1 is one of these proteins, and is responsible for exporting [toxic compounds](#) out of the cell in vital organs such as the brain, testes, and placenta. Sometimes, though, it can also export chemotherapeutic drugs from [cancer cells](#), making them resistant to treatment. The [protein](#) lies across the cell membrane, with one end reaching into the

cell and the other poking out into the surrounding space. Even though scientists have known its roles and structure for years, exactly how it functions has been unclear.

Ueda and his team crystallized the ABCB1 protein before and after it exported a compound. They then conducted X-ray tests to determine the differences between the two structures. They also conducted analyses using ABCB1 fused with fluorescent proteins to monitor the [conformational changes](#) during transport.

They found that compounds destined for export access ABCB1's cavity through a gate in the part of the protein lying inside of the [cell membrane](#). The compound rests at the top of the cavity, where it attaches to molecules, triggering a structural change in the protein. This change requires energy, which is derived from the energy-carrying molecule adenosine triphosphate (ATP). When magnesium ions bind to ATP, the part of ABCB1 inside the cell packs tightly in on itself and tilts, causing its cavity to shrink and then close. This opens the protein's exit gate. ATP is also involved in making ABCB1 progressively rigid from its bottom to its top, leading to a twist and squeeze motion that expels the compound into the extracellular space.

"This mechanism is distinct from those of other transporter proteins," says Ueda. "We expect our work will facilitate the study of other ABC proteins, such as those involved in cholesterol homeostasis."

More information: Atsushi Kodan et al, ABCB1/MDR1/P-gp employs an ATP-dependent twist and squeeze mechanism to export hydrophobic drugs, *FEBS Letters* (2020). [DOI: 10.1002/1873-3468.14018](https://doi.org/10.1002/1873-3468.14018)

Provided by Kyoto University

APA citation: Protein twist and squeeze confers cancer drug resistance (2020, December 29) retrieved 21 September 2022 from <https://medicalxpress.com/news/2020-12-protein-confers-cancer-drug-resistance.html>

This document is subject to copyright. Apart from any fair dealing for the purpose of private study or research, no part may be reproduced without the written permission. The content is provided for information purposes only.