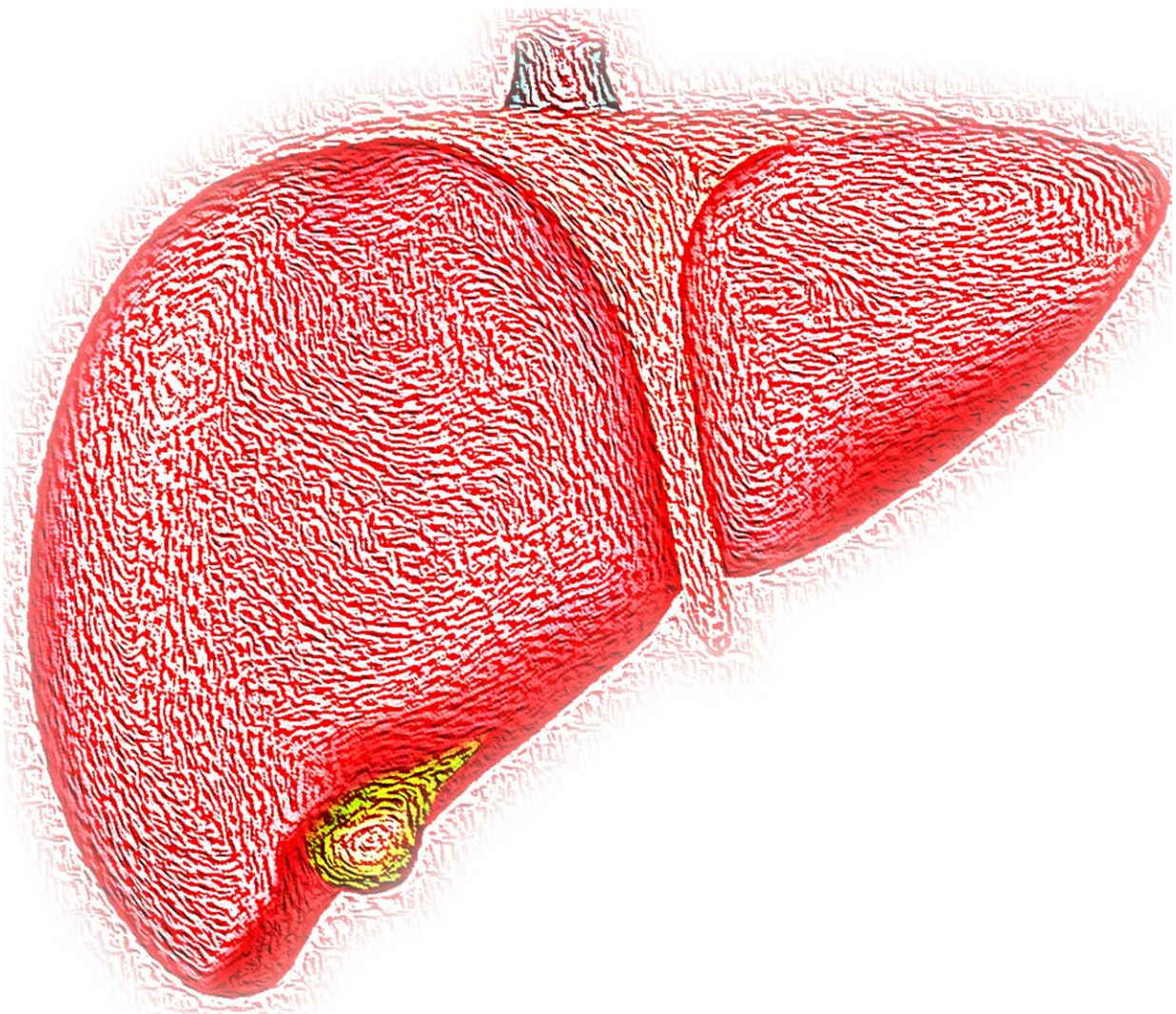


Liver scarring relatively common among middle-aged adults

November 9 2020



Credit: CC0 Public Domain

A substantial minority of participants from the Framingham Heart Study, (nearly nine percent), had potentially clinically significant liver fibrosis (scarring). This the first study of this size and scale done in the United States.

"Before this study, we did not know how common asymptomatic [liver fibrosis](#) (scarring) was among adults living in the community," said corresponding author Michelle T. Long, MD, Msc, assistant professor of medicine at Boston University School of Medicine (BUSM).

More than 3,000 middle-aged Framingham Heart Study participants (over a three-year period) underwent a test called a Fibroscan or vibration-controlled transient elastography that quantifies how much fat is in the liver and also measures the stiffness of the liver. Liver stiffness correlates with the degree of liver scarring.

"We found that liver fibrosis was associated with more adverse cardiometabolic risk factors, even after accounting for liver fat which is a known risk factor for cardiometabolic disease. In particular, we observed that approximately one-quarter of the participants with diabetes had evidence of possibly clinically significant liver fibrosis," explained Long, who also is a hepatologist at Boston Medical Center.

According to the researchers, these findings support the consideration of screening for liver fibrosis in high-risk groups, though additional studies are needed to determine the benefits/costs of screening. "Liver biopsy is the gold standard for diagnosing liver fibrosis; however, new non-invasive tests exist that can quickly and painlessly help doctors determine if you are at risk for having clinically significant liver

fibrosis."

If liver fibrosis is identified early, before cirrhosis is established, it is treatable. Long believes greater recognition of and awareness of liver [fibrosis](#) as a consequence of nonalcoholic fatty liver disease will hopefully allow more patients to receive treatment to prevent complications of advanced [liver](#) disease.

More information: Michelle T. Long et al. Hepatic fibrosis associates with multiple cardiometabolic disease risk factors: The Framingham Heart Study, *Hepatology* (2020). [DOI: 10.1002/hep.31608](https://doi.org/10.1002/hep.31608)

Provided by Boston University School of Medicine

Citation: Liver scarring relatively common among middle-aged adults (2020, November 9) retrieved 20 July 2023 from <https://medicalxpress.com/news/2020-11-liver-scarring-common-middle-aged-adults.html>

This document is subject to copyright. Apart from any fair dealing for the purpose of private study or research, no part may be reproduced without the written permission. The content is provided for information purposes only.