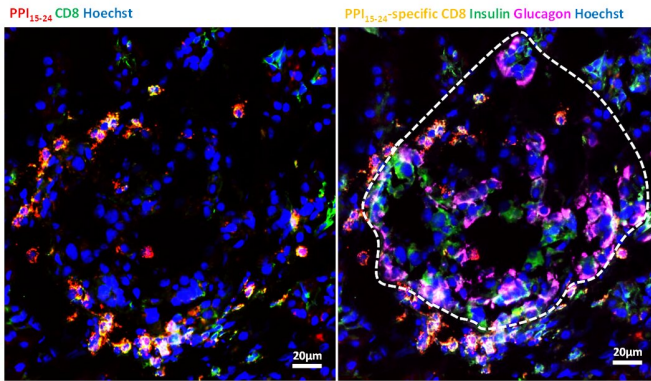


# Diabetes researchers spot dangerous T cells in the pancreas—even in healthy people

16 October 2020



Yellow staining shows CD<sup>8</sup><sup>+</sup>T cells poised to target preproinsulin. The white outline on the right shows the perimeter of an insulin-containing islet in a patient with type 1 diabetes. The image shows that the preproinsulin-specific T cells can wait very close islets, probably poised to destroy the beta cells inside. Credit: Von Herrath Laboratory, La Jolla Institute for Immunology

Your pancreas is studded with cell clusters called islets. In most people, special beta cells live snug in the islets, happily making the insulin that the body uses to regulate blood sugar. But in people with type 1 diabetes, the body's T cells mistakenly move into the islets and kill the beta cells.

It's long been thought that having "autoreactive" T cells in the pancreas was a sure sign of type 1 diabetes. Yet a new study led by scientists at La Jolla Institute for Immunology (LJI) shows that even healthy people have these cells lurking in the pancreas—in surprisingly high numbers.

"These T cells are like predators," says LJI Professor Matthias von Herrath, M.D., senior author of the new study, published October 16, 2020, in *Science Advances*. "And we always thought that [beta cells](#) would die if the predator was there. But it turns out the T cells are already there. They just seem to be waiting for a signal to

attack."

These "predator" cells are called CD<sup>8</sup><sup>+</sup> T cells, and they specifically target a molecule called preproinsulin, a precursor to insulin. Previous studies have shown that healthy people do have some of these T cells in their bloodstream. No one knew if these cells would travel to the pancreas though—partly because of the challenge of obtaining pancreas samples.

In work spearheaded by Christine Bender, Ph.D., first author of the study and a postdoctoral fellow in the von Herrath Lab, the researchers used a new staining technique to show where these cells gathered in precious human tissue samples. They were surprised to see that even healthy people had preproinsulin-specific T cells swarming in the pancreas.

It appears that high numbers of these T cells in the pancreas are the default—whether you have type 1 diabetes or not. "We were surprised," says Bender. "Of course, every donor is different, but in general, the numbers are pretty high."

Of course, people with type 1 diabetes had it worse. Their tissue samples showed the T cells very close to—and even infiltrating—the islets.

"We can't say that these are the only culprits in type 1 diabetes," says von Herrath. "But these T cells are the prime suspects."

These results add evidence for the theory that type 1 diabetes is not caused by malfunctioning T cells attacking beta cells. Instead, the body is already making these T cells and something in the pancreas is triggering the attack. Von Herrath thinks this could mean that an effective type 1 [diabetes](#) therapy would need to be local to the [pancreas](#).

Going forward, the researchers plan to take a

closer look at how the preproinsulin-specific T [cells](#) behave. The team also hopes to investigate other proteins in islets that might attract T cell attacks.

"We still have so many questions," says Bender.

**More information:** The healthy exocrine pancreas contains preproinsulin-specific CD8 T cells that attack islets in type 1 diabetes, *Science Advances* (2020). [DOI: 10.1126/sciadv.abc5586](https://doi.org/10.1126/sciadv.abc5586)

Provided by La Jolla Institute for Immunology

APA citation: Diabetes researchers spot dangerous T cells in the pancreas—even in healthy people (2020, October 16) retrieved 12 October 2022 from <https://medicalxpress.com/news/2020-10-diabetes-dangerous-cells-pancreaseven-healthy.html>

*This document is subject to copyright. Apart from any fair dealing for the purpose of private study or research, no part may be reproduced without the written permission. The content is provided for information purposes only.*