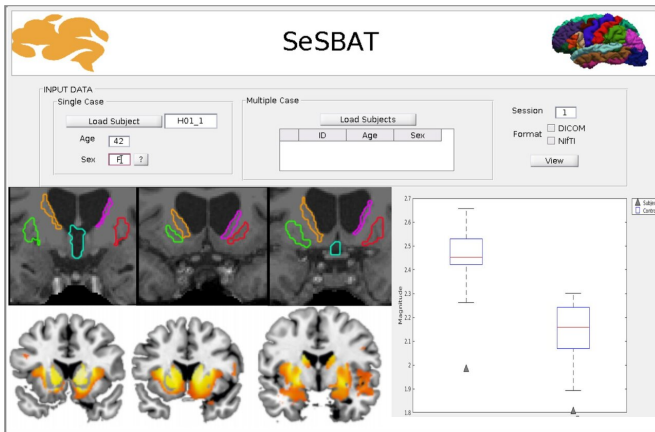


Detecting neurodegeneration biomarkers through magnetic resonance imaging

8 October 2020



This tool is able to identify single-person neurodegeneration before the symptom's appearance, which could significate a more effective and personalized medicine. Credit: Bellvitge Biomedical Research Institute (IDIBELL)

Magnetic resonance imaging is the most sensitive and reliable technique for diagnosing and monitoring neurodegenerative diseases. Through the images obtained, clinicians can make a complete anatomical analysis of the brain and detect atrophy in specific regions. However, the inspection of the images is usually visual, which means that certain signs of neurodegeneration, invisible to the human eye, are not detected until the damage is already advanced.

Dr. Estela Cámara from Bellvitge Biomedical Research Institute (IDIBELL) and Psychology Faculty and the Neuroscience Institute of the University of Barcelona (UBNeuro), together with Alicia Palomar, has designed a [computer program](#) that allows the [quantitative analysis](#) of magnetic resonance images easily, quickly and adaptable to any brain affliction. This program, called SeSBAT (Single Subject Brain Analysis Toolbox), integrates image analysis protocols that can measure the

volume of specific regions of the brain or perform a general exploration of it, and detect small changes invisible to the eye that could predict the risk of developing a degenerative [disease](#).

SeSBAT opens the door to the identification of new biomarkers to improve the early detection and monitoring of neurodegenerative diseases. Since it is a quantitative analysis, it is capable of identifying anatomical modifications of the [brain](#) that take place before the appearance of symptoms.

With this type of integrated analysis, data can be extracted from a single individual, avoiding the inter-individual variability of working with groups. This allows the individualized monitoring of a patient over time, which would be very useful to determine the efficacy of certain drugs in [clinical trials](#) or to monitor people at risk of developing a neurodegenerative disease.

Dr. Cámara's team has tested the accuracy of this new tool in [magnetic resonance imaging](#) of patients with Huntington's neurodegenerative disease. The results, published in the journal *Frontiers in Systems Neuroscience*, show that the tool is able to identify those patients who are in the early stages of the disease, and even those who have not yet presented the first symptoms.

Dr. Cámara states that it is a very versatile program that could be adapted and personalized for each type of neurodegenerative disease or project. Cámara's group is seeking new collaborations with groups interested in applying this technology to their projects. Similarly, the tool could easily be applied to routine clinical practice, allowing a much deeper [analysis](#) of MRI images and more accurate management of patients with neurodegenerative diseases.

More information: Alicia Palomar-Garcia et al, SeSBAT: Single Subject Brain Analysis Toolbox. Application to Huntington's Disease as a

Preliminary Study, *Frontiers in Systems
Neuroscience* (2020). DOI:
[10.3389/fnsys.2020.488652](https://doi.org/10.3389/fnsys.2020.488652)

Provided by IDIBELL-Bellvitge Biomedical
Research Institute
APA citation: Detecting neurodegeneration biomarkers through magnetic resonance imaging (2020,
October 8) retrieved 1 December 2022 from
[https://medicalxpress.com/news/2020-10-neurodegeneration-biomarkers-magnetic-resonance-
imaging.html](https://medicalxpress.com/news/2020-10-neurodegeneration-biomarkers-magnetic-resonance-imaging.html)

This document is subject to copyright. Apart from any fair dealing for the purpose of private study or research, no part may be reproduced without the written permission. The content is provided for information purposes only.