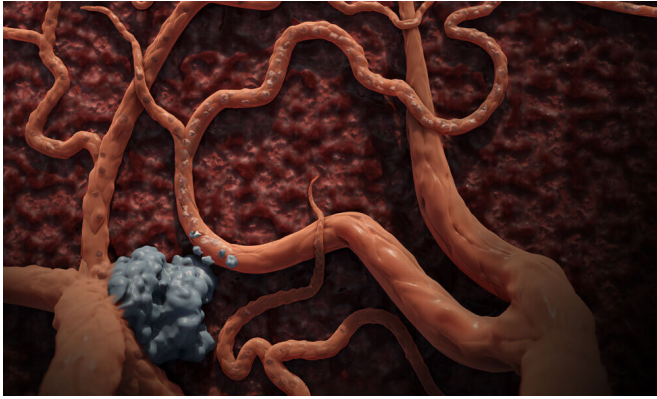


# Cancer immunotherapy 'uniquely suppressed' by liver tumors

2 October 2020



Jeffrey Bluestone, Ph.D., adjunct professor of microbiology and immunology and the A.W. and Mary Margaret Clausen Distinguished Professor of Metabolism and Endocrinology, showed that adding a second type of checkpoint inhibitor in a combination therapy can overcome this resistance, and might significantly increase the effectiveness of immunotherapy in patients with [liver metastases](#).

"The liver actually triggers differences in [immune cells](#) at distant sites," Lee said. And what's more, he added, "the liver can choose its enemy—what it wants to protect or not protect."

Checkpoint inhibitor immunotherapies, such as PD-1 blockade, fail to provide sufficient protection in patients with liver metastasis. Credit: Lee et al., *Sci. Immunol.* 5, eaba0759 (2020)

Though cancer immunotherapy has become a promising standard-of-care treatment—and in some cases, perhaps a cure—for a wide variety of different cancers, it doesn't work for everyone, and researchers have increasingly turned their attention to understanding why.

For example, doctors have noticed that patients who initially respond well to the immunotherapy drugs known as checkpoint inhibitors, such as those that target a protein called PD-1, can develop resistance to these therapies if their [cancer](#) has metastasized from its initial location to form additional tumors in the liver—even if their primary cancer is quite distant from the liver.

In a new study published Oct. 2, 2020 in *Science Immunology*, a UCSF research team led by Hematology and Oncology Clinical Fellow James Lee, MD, MHS, used a unique mouse model to figure out how this happens.

Then, the researchers, including senior author

Cancers are sometimes able to avoid detection within the body by cloaking themselves from the [immune system](#). They can produce large quantities of proteins like PD-L1, which "switch off" [cells](#) called regulatory T cells (Tregs; pronounced "tee-regs"), in turn tamping down the immune response of other T cells that attack cancer. Some checkpoint inhibitors counteract this cloaking process by preventing PD-L1 from binding to the PD-1 off-switches on T cells, allowing a normal defensive immune response against cancer cells.

The liver, which is tasked with filtering large quantities of blood directly from the digestive system and the rest of the body, plays an unexpectedly large role in regulating the immune system—specifically, by signaling which of the scavenged proteins it encounters as it does its job are from hostile invaders and which should be ignored.



response of Tregs, and thus other T cells, to a separate, but related, tumor?

Using single-cell analyses, the team showed that, in mice with liver tumors, T cells associated with the related "primary" tumor were not as highly activated. Finally, the researchers showed that liver tumors change which genes are expressed in Tregs and, through those cells, a host of other immune-system cells as well. "It turned out that there wasn't a difference in the quantity of Tregs between the skin tumors of mice with liver cancers and the mice without liver cancers. It was a difference in quality," Lee said.

The researchers pinpointed regulatory pathways that are hindered in the presence of liver metastasis, causing dysfunctional antitumor immunity that could only be reversed with a combination of PD-1 checkpoint blockade and depletion of immunosuppressive regulatory T cells. Credit: Lee et al., *Sci. Immunol.* 5, eaba0759 (2020)

In work supported by the Parker Institute for Cancer Immunotherapy, the scientists simulated metastasis by implanting mice with cancer cells in two separate locations, first under the skin and then in either the liver or the lung. They found evidence that when cancer takes hold in the liver it is "uniquely suppressive," said Lee—able to harness the liver's powers to retrain the immune system and exert its influence on the immune response to related cancers that are distant in the body.

Compared to mice with secondary cancers implanted in the lung, survival rates were significantly worse in mice with secondary liver cancers after anti-PD-1 treatment: the immune system did not learn to recognize the liver [tumor](#) or, notably, the related tumor implanted under the skin.

That level of immune-system discernment clued the team in on a possible mechanism, because "only a few types of cells can be that specific in regulating the immune system," Lee said, including Tregs. Bluestone has spent decades studying these cells, and that's where the researchers looked for an explanation. Could a liver tumor change the

Since liver tumors caused Tregs to suppress the T cell response against tumors, the researchers tested two drugs to see if they could override the effect of the Tregs. The first was a drug that blocks the T cell checkpoint inhibitor CTLA-4, which unleashes these cells to attack cancer; in the 1990s, Bluestone did pioneering research on CTLA-4 that helped lay the foundations for [cancer immunotherapy](#). The second drug, another anti-CTLA-4 compound, targets Tregs directly and depletes their numbers. Both restored the effectiveness of anti-PD-1 therapy, though the anti-CTLA-4 drug that depletes Tregs was more effective.

The researchers hope to apply this [combination therapy](#) in the future to patients whom they know ahead of time are less likely to respond to treatment.

"We've never had this kind of precision in immunotherapy in the past," Lee said. "What if, right from the start, you could use a drug that depletes Tregs as a complement to immunotherapy in patients with [liver](#) metastasis?"

**More information:** J.C. Lee et al., "Regulatory T cell control of systemic immunity and immunotherapy response in liver metastasis," *Science Immunology* (2020). [immunology.sciencemag.org/lookup/doi/10.1126/sciimmunol.aba0759](https://immunology.sciencemag.org/lookup/doi/10.1126/sciimmunol.aba0759)

Provided by University of California, San  
Francisco

APA citation: Cancer immunotherapy 'uniquely suppressed' by liver tumors (2020, October 2) retrieved  
28 September 2022 from [https://medicalxpress.com/news/2020-10-cancer-immunotherapy-uniquely-  
suppressed-liver.html](https://medicalxpress.com/news/2020-10-cancer-immunotherapy-uniquely-suppressed-liver.html)

*This document is subject to copyright. Apart from any fair dealing for the purpose of private study or research, no part may be reproduced without the written permission. The content is provided for information purposes only.*