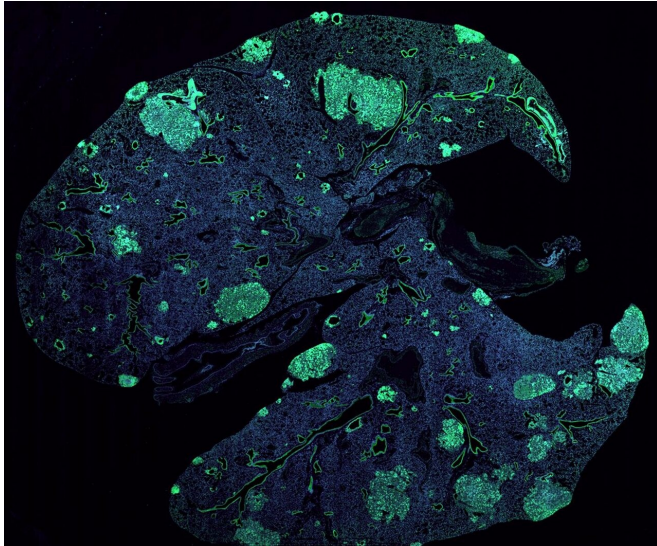


# Cancer cells use nerve-cell tricks to spread from one organ to the next

30 September 2020



A mouse lung with metastases (green) formed by cancer cells that spread from a primary breast tumor. Credit: Laboratory Of Systems Cancer Biology at The Rockefeller University

Tumors come in many shapes and forms—curable or deadly, solid or liquid, lodged inside the brain, bone, or other tissues. One thing they all have in common, however, is a knack for molecular deceit. It is often by posing as normal cells, or by hijacking them, that cancer cells advance their takeover of biological systems and learn to grow, survive, and spread to new organs.

Recently, Rockefeller scientists found that breast and [lung tumors](#) can appropriate a [signaling pathway](#) used by neurons to metastasize. In a report published in *Nature*, the researchers describe how these cancer cells enlist nearby blood vessels to gain access to this nerve signal, ultimately enabling their escape from the primary tumor and into the bloodstream.

In addition to illuminating previously unseen

aspects of tumors' relationship with their surroundings, the findings could lead to new strategies for diagnostics and treatment.

## Blood vessels: more than just tumor tubing

The classic example of a tumor's pirate tactics is its ability to attract nearby blood vessels and hook itself up to the body's central oxygen and nutrient supply. Years ago, scientists in Sohail Tavazoie's lab observed that tumors that eventually metastasize tend to recruit more vessels than those that don't, adding fuel to a long-held suspicion that infiltrating vasculature isn't merely helping tumors survive and grow: It might also be participating in the lesser-understood process by which some cancer cells are capable of leaving their site of origin and seed new tumors elsewhere in the body.

"We hypothesized that cells in the inner lining of [blood-vessels](#) send a signal that instructs cancer cells within the primary tumor to metastasize," Tavazoie says.

Bernardo Tavora, a research associate in the lab and first author of the recent paper, set out to look for that signal using a combination of sophisticated genetic, molecular, and biochemical approaches—including a modified form of TRAP, a technology developed in the lab of Nathaniel Heinz that makes it possible to pinpoint subtle differences between otherwise-similar cells and the proteins they produce. Ultimately, Tavora and his colleagues identified the signal as Slit2, a protein normally produced by neurons. In addition, they were able to explain how cancer cells get their hands on it.

When it first popped up in the search, Slit2 immediately rang a bell. In the [nervous system](#), this signaling molecule is known to help guide nerve-cell extensions as they travel from one part of the brain to the other—for example, previous work in the lab of Rockefeller's Cori Bargmann has revealed

that it regulates connectivity among neurons in worms.

The researchers found that breast and lung cancer cells use what Tavazoie calls "an intricate and elegant mechanism" to coax blood-vessel cells into making and releasing Slit2—just enough of a dose to help the [cancer cells](#) start migrating. "The [cells](#) first activate normally silenced DNA to produce double-stranded RNA, which in turn acts as a signal to trigger their own movement out of the primary tumor and into the blood, from where they can spread to other organs," he says.

Slit2 and other molecules identified in this pathway could potentially serve as diagnostics—for example, by helping physicians identify patients whose cancers have left the [primary tumor](#) before it's too late to intervene. "There's also a chance that inhibiting these pathways could open the door to novel cancer drugs that curb metastasis," says Tavora.

**More information:** Bernardo Tavora et al, Tumoural activation of TLR3–SLIT2 axis in endothelium drives metastasis, *Nature* (2020). [DOI: 10.1038/s41586-020-2774-y](https://doi.org/10.1038/s41586-020-2774-y)

Provided by Rockefeller University

APA citation: Cancer cells use nerve-cell tricks to spread from one organ to the next (2020, September 30) retrieved 25 June 2022 from <https://medicalxpress.com/news/2020-09-cancer-cells-nerve-cell.html>

*This document is subject to copyright. Apart from any fair dealing for the purpose of private study or research, no part may be reproduced without the written permission. The content is provided for information purposes only.*