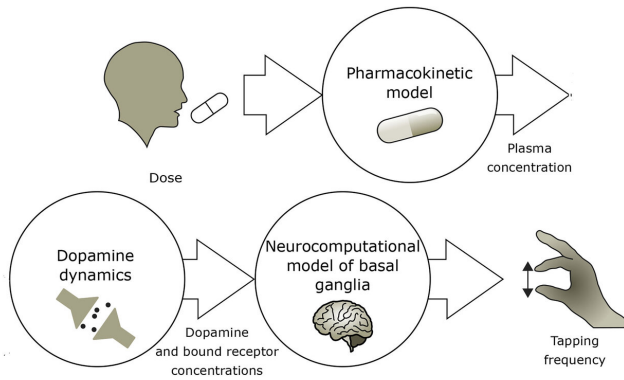


# Finding right drug balance for Parkinson's patients

29 September 2020



A representation of how finger tapping frequency is used to determine the appropriate levodopa dose in treating Parkinson's disease. Credit: Florence Véronneau-Veilleux

Parkinson's disease is most commonly treated with levodopa, a drug which alleviates the slowing of bodily movements, called bradykinesia, found in Parkinson's disease patients.

But the benefits of levodopa wear off as the disease progresses. The relationship between its dosage and its effectiveness becomes fuzzy, and high doses can result in dyskinesia, which are involuntary and uncontrollable movements.

To better understand the underlying reasons behind these effects, researchers from the Université de Montréal, University of Bologna, and University of Ottawa created a model of the interactions between levodopa, dopamine, and the [basal ganglia](#), an area of the brain that plays a crucial role in Parkinson's disease. They discuss their findings in the journal *Chaos*.

"In Parkinson's disease, the dopaminergic neurons of the basal ganglia are dying, which results in a lower concentration of dopamine. Levodopa is

effective at the beginning of the disease, because it can be transformed into dopamine by the remaining dopaminergic neurons," said Florence Véronneau-Veilleux, one of the authors. "However, at advanced stages of disease, there are not enough remaining [dopaminergic neurons](#) for levodopa to prevent symptoms."

Once they confirmed the accuracy of their model by using it to predict behavior like modification of dopamine dynamics with neuron degeneration, the group used it to simulate a patient tapping their finger a few hours after taking levodopa, a clinical assessment of bradykinesia.

What they found verified suspicions about the progression of Parkinson's disease. Eventually, as the brain loses more and more of its [neurons](#), its dopamine concentration falls, and no amount of levodopa can compensate for this. This leads to a competition of effects, in which maintaining low levels of levodopa is not sufficient for treating bradykinesia but continuously increasing the administered levodopa to try to restore [dopamine](#) causes dyskinesia.

By providing deeper insight into how Parkinson's disease evolves, the authors hope their model will be applied to tailor individual treatments. When combined with monitoring devices to measure a patient's finger tapping frequency at various times after taking [levodopa](#), the [model](#) can help estimate individual dosage specifications.

"With an optimization algorithm, we can find the optimal regimen—dose and time—according to different criteria for this specific patient," Véronneau-Veilleux said.

**More information:** "Nonlinear pharmacodynamics of Levodopa through Parkinson's disease progression," *Chaos* (2020). [aip.scitation.org/doi/10.1063/5.0014800](http://aip.scitation.org/doi/10.1063/5.0014800)

Provided by American Institute of Physics

APA citation: Finding right drug balance for Parkinson's patients (2020, September 29) retrieved 24 July 2022 from <https://medicalxpress.com/news/2020-09-drug-parkinson-patients.html>

*This document is subject to copyright. Apart from any fair dealing for the purpose of private study or research, no part may be reproduced without the written permission. The content is provided for information purposes only.*