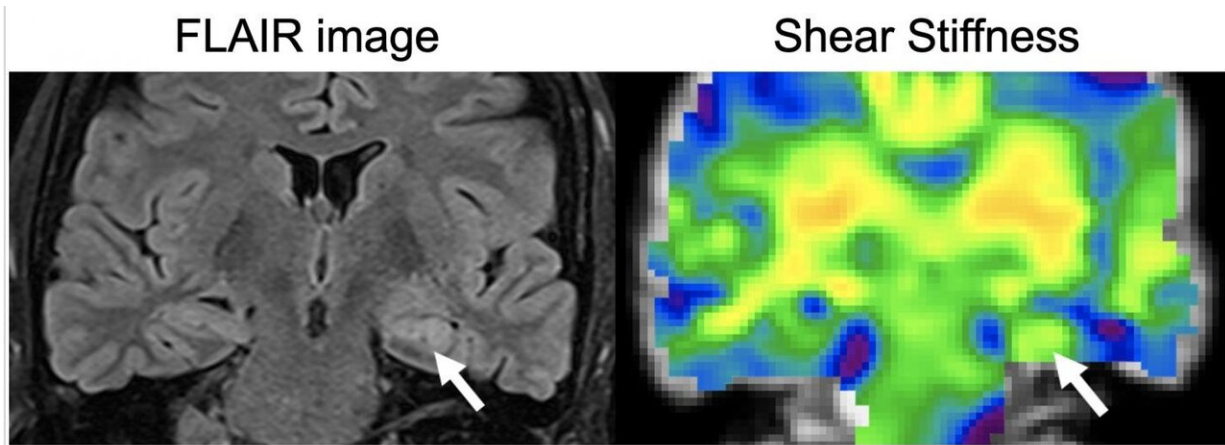


Using magnetic resonance elastography to detect epilepsy

September 2 2020, by Ananya Sen



A FLAIR image, left, is conventionally used to show what part of the brain is impacted by the disease, is shown with the corresponding MRE stiffness map from the patient showing stiffness changes due to disease. The affected side is indicated by the arrow. Credit: Beckman Institute

A new study uses magnetic resonance elastography to compare the stiffness of the hippocampus in patients who have epilepsy with healthy individuals. The technique can improve the detection and characterization of the disease.

The study "Hippocampal stiffness in mesial temporal lobe [epilepsy](#) measured with MR elastography: Preliminary comparison with healthy

participants" was published in *NeuroImage: Clinical*. The work was done through a collaboration with the Carle Neuroscience Institute and the Beckman Institute for Advanced Science and Technology at the University of Illinois Urbana-Champaign.

Mesial temporal lobe epilepsy is the most common form of epilepsy that is resistant to medication. Unfortunately, current detection methods, which include [magnetic resonance](#) imaging, can only visualize the epilepsy-induced changes in the [brain](#) after significant damage has occurred.

"The structural changes in the brain, in response to seizures, causes the death of neurons and the formation of scar tissue," said Graham Huesmann, a neurologist at Carle and a research assistant professor of molecular and integrative physiology, who is a part-time faculty member at the Beckman Institute. "By the time we see any changes on the MRI, the disease is pretty advanced. We wanted to detect these changes earlier using MRE."

MRE uses the MRI scanner to look at the stiffness of brain tissues.

"MRE is a non-invasive technique. Essentially a person lies on a little vibrating pillow, sending the vibrations into the tissues which change as the composition and the organization of the tissue changes," said Hillary Schwarb, a Beckman Institute research scientist who also is affiliated with the Interdisciplinary Health Sciences Institute. "It's like hitting the surface of a pond and watching the ripples that are formed. If there is a big rock underneath the surface, those ripples are going to move and change."

MRE is already used clinically for the staging of various liver diseases and has replaced invasive liver biopsies. "For epilepsy in the brain, MRE may prove similarly useful for staging progressive epilepsies, like mesial temporal lobe epilepsy, toward earlier detection" said Aaron Anderson, a

Carle Foundation Hospital-Beckman Institute Postdoctoral Fellow.

The researchers used MRE to see if there were any changes in the hippocampus. "The hippocampus is the part of the brain that is involved in memory," said Brad Sutton, a professor of bioengineering and the technical director of Beckman's Biomedical Imaging Center. "In the early stages of epilepsy, there is a little bit of damage to the structure, which we can detect with MRE."

Early detection of these changes is critical for the disease, especially because it causes very mild symptoms in the beginning stages. "It starts with a feeling of déjà vu, which becomes more common as the disease progresses. Eventually it develops into a form that is medication resistant," Huesmann said. "MRE allows us to detect these changes earlier affording us the opportunity to change the course of treatment."

"MRE can also inform doctors about when to intervene with surgery," said Tracey Wszalek, the director of the Biomedical Imaging Center. If the surgery is done too early, it may affect a part of the brain that is still in use. However, if it is done too late, the patients lose their ability to make new memories.

The researchers are now focusing on how to optimize the technique and also look at other types of epilepsy. "All of our imaging techniques currently depend on looking at brain chemistry and the static images of the brain," Huesmann said. "Using MRE to see how the brain jiggles is an exciting way to approach this problem. It is also an inexpensive technique and can therefore be used by anyone."

More information: Graham R. Huesmann et al, Hippocampal stiffness in mesial temporal lobe epilepsy measured with MR elastography: Preliminary comparison with healthy participants, *NeuroImage: Clinical* (2020). [DOI: 10.1016/j.nicl.2020.102313](https://doi.org/10.1016/j.nicl.2020.102313)

Provided by Beckman Institute for Advanced Science and Technology

Citation: Using magnetic resonance elastography to detect epilepsy (2020, September 2)
retrieved 28 January 2023 from <https://medicalxpress.com/news/2020-09-magnetic-resonance-elastography-epilepsy.html>

This document is subject to copyright. Apart from any fair dealing for the purpose of private study or research, no part may be reproduced without the written permission. The content is provided for information purposes only.